

**High Temperature
Straight Board Mount Connectors**

SPECIFICATIONS:

MATERIALS AND PLATINGS

Shells	Steel/nickel plated
Contacts	Precision formed copper alloy
Contact Plating	Gold over nickel

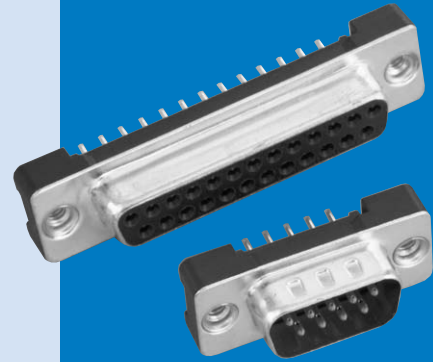
ELECTRICAL DATA

Current Rating	5 amps
Voltage Rating	600 V
Dielectric	Glass filled thermoplastic, black, UL 94 VO
Contact Resistance	10 milliohms (max.)

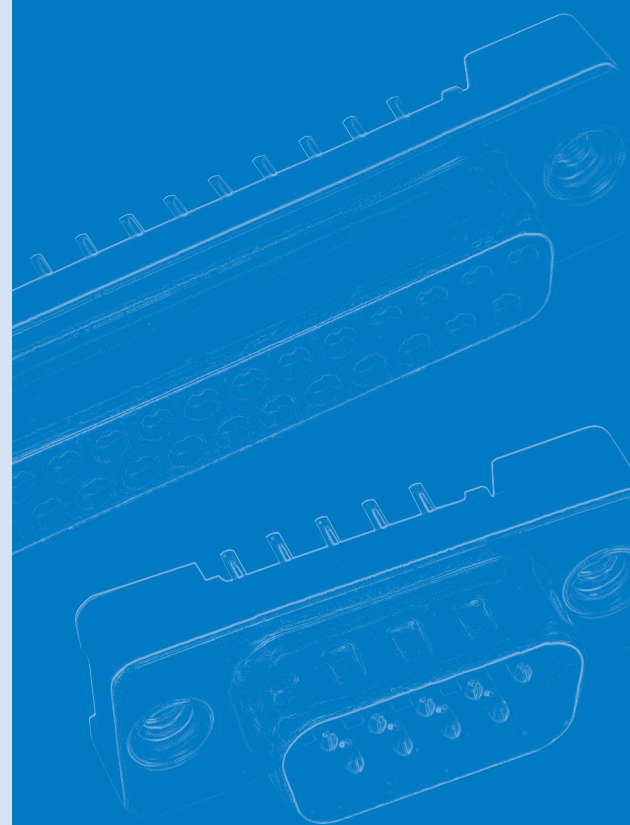
CLIMATIC DATA

Temperature Range	Environmental: -67°F (-55°C) to 302°F (150°C)
Process Compatibility	IR-Air Convection 500°F (260°C) for 20 seconds

617S SERIES

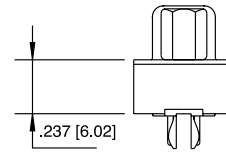
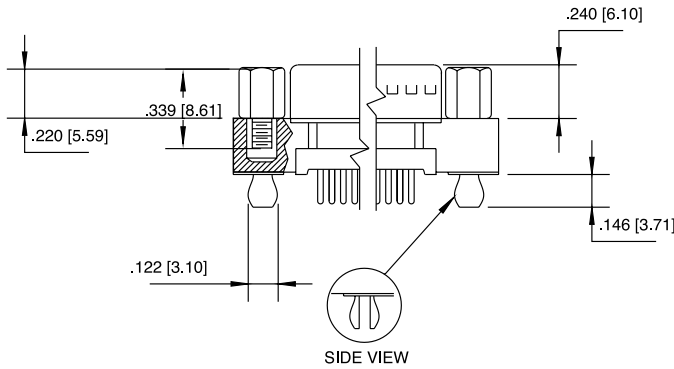
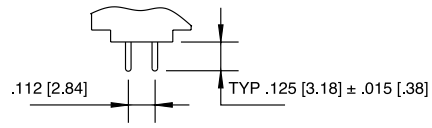
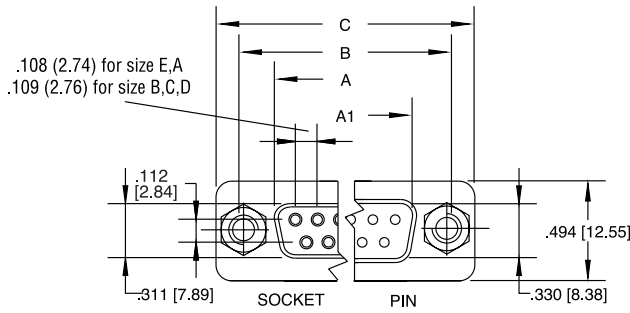


Amphenol's high temperature, low profile D-Sub connector gives you a high quality, reliable commercial connector to meet today's market demands.

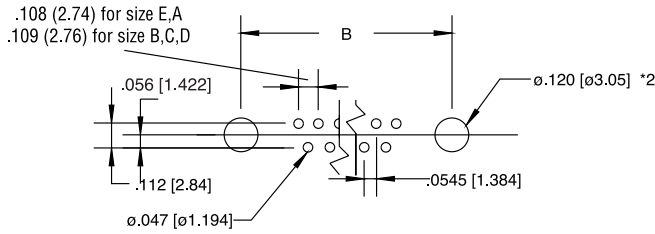


INCHES (MM)

DIMENSIONS



CONTACTS	A SOCKET	A1 PIN	B	C
9	.642 [16.30]	.666 [16.92]	.984 [25.0]	1.213 [30.8]
15	.969 [24.6]	.994 [25.25]	1.311 [33.3]	1.543 [39.2]
25	1.508 [38.3]	1.534 [38.96]	1.854 [47.1]	2.091 [53.1]
37	2.157 [54.8]	2.182 [55.42]	2.50 [63.5]	2.732 [69.4]



ORDERING INFORMATION

617S - C - 0XX - X - XX - X - XX

<p>Series _____</p> <p>Code Boardlock _____</p> <p>C Split arrowhead boardlock</p> <p>O No boardlock</p> <p>Number of contacts _____</p> <p>9, 15, 25 or 37</p> <p>Code Gender _____</p> <p>P Pin (male)</p> <p>S Socket (female)</p> <p>Code Contact Plating _____</p> <p>BJ Engagement area 10µ" (2.54µ), terminal end area 100µ"/200µ" (2.54µ/5.08µ) -tin/lead, underplate of 50µ" (1.27µ) nickel</p> <p>AJ Engagement area 30µ" (.76µ) gold, terminal end area 100µ"/200µ" (2.54µ/5.08µ) -tin/lead, underplate of 50µ" (1.27µ) nickel</p>	<p>Code Housing Characteristics</p> <p>20 Tin plated receptacle</p> <p>21 Tin plated</p> <p>Code Panel Mounting Options</p> <p>1 #4-40 threaded hole</p> <p>2 #4-40 threaded hole with female screwlock</p> <p>3 M-3 threaded hole</p>
--	--