

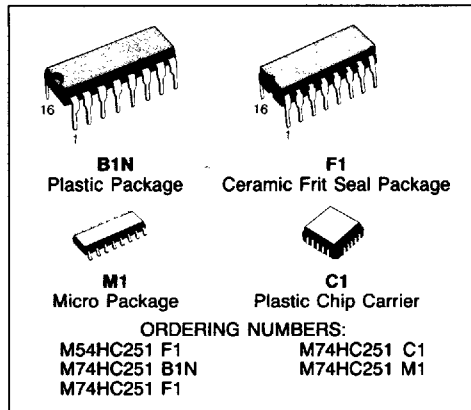

SGS-THOMSON
 MICROELECTRONICS

S G S-THOMSON

M54HC251
M74HC251

8-CHANNEL MULTIPLEXER (3-STATE)

- HIGH SPEED
 $t_{PD} = 18 \text{ ns (TYP.) at } V_{CC} = 5\text{V}$
- LOW POWER DISSIPATION
 $I_{CC} = 4 \mu\text{A (MAX.) at } T_A = 25^\circ\text{C 6V}$
- HIGH NOISE IMMUNITY
 $V_{NIH} = V_{NIL} = 28\% V_{CC} \text{ (MIN.)}$
- OUTPUT DRIVE CAPABILITY
 10 LSTTL LOADS
- SYMMETRICAL OUTPUT IMPEDANCE
 $|I_{OH}| = I_{OL} = 4 \text{ mA (MIN.)}$
- BALANCED PROPAGATION DELAYS
 $t_{PLH} = t_{PHL}$
- WIDE OPERATING VOLTAGE RANGE
 $V_{CC} \text{ (OPR)} = 2\text{V to } 6\text{V}$
- PIN AND FUNCTION COMPATIBLE
 WITH 54/74LS251



DESCRIPTION

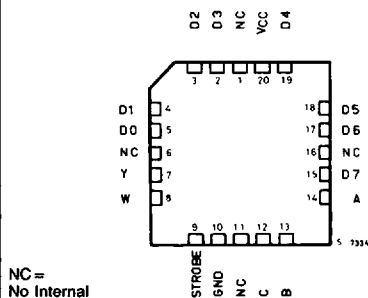
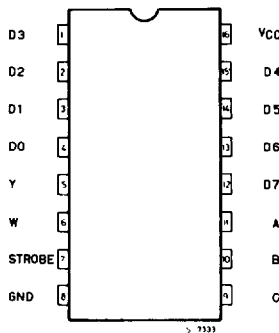
The M54/74HC251 is a high speed CMOS 8-CHANNEL MULTIPLEXER (3-STATE) fabricated in silicon gate C²MOS technology. It has the same high speed performance of LSTTL combined with true CMOS low power consumption. This multiplexer features both true (Y) and complement (W) outputs as well as a STROBE input. The STROBE must be at a low logic level to enable this device. When the STROBE input is high, both outputs are in the high impedance state. When enabled, address information on the data select inputs determines which data input is routed to Y and W. All inputs are equipped with protection circuits against static discharge and transient excess voltage.

TRUTH TABLE

INPUTS				OUTPUTS	
SELECT			STROBE	Y	W
C	B	A			
X	X	X	H	Z	Z
L	L	L	L	D0	$\overline{D0}$
L	L	H	L	D1	$\overline{D1}$
L	H	L	L	D2	$\overline{D2}$
L	H	H	L	D3	$\overline{D3}$
H	L	L	L	D4	$\overline{D4}$
H	L	H	L	D5	$\overline{D5}$
H	H	L	L	D6	$\overline{D6}$
H	H	H	L	D7	$\overline{D7}$

Z: HIGH IMPEDANCE X: DON'T CARE

PIN CONNECTIONS (top view)



RECOMMENDED OPERATING CONDITIONS

S 6 S-THOMSON

Symbol	Parameter	Value	Unit
V _{CC}	Supply Voltage	2 to 6	V
V _I	Input Voltage	0 to V _{CC}	V
V _O	Output Voltage	0 to V _{CC}	V
T _A	Operating Temperature 74HC Series 54HC Series	-40 to 85 -55 to 125	°C
t _r , t _f	Input Rise and Fall Time	V _{CC} $\begin{cases} 2 \text{ V} & 0 \text{ to } 1000 \\ 4.5 \text{ V} & 0 \text{ to } 500 \\ 6 \text{ V} & 0 \text{ to } 400 \end{cases}$	ns

DC SPECIFICATIONS

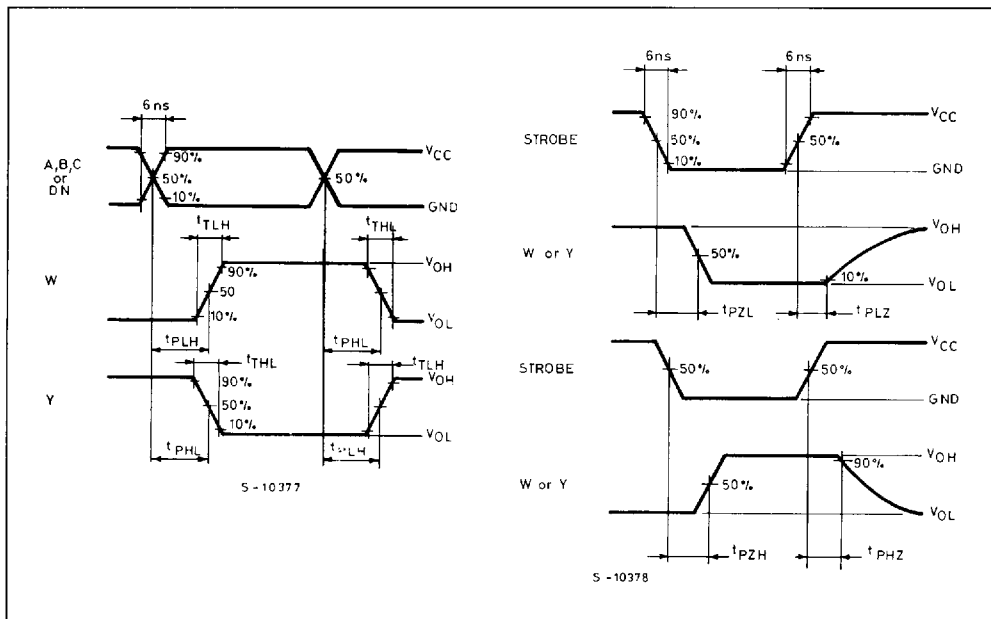
Symbol	Parameter	V _{CC}	Test Condition	T _A = 25°C 54HC and 74HC			-40 to 85°C 74HC		-55 to 125°C 54HC		Unit	
				Min.	Typ.	Max.	Min.	Max.	Min.	Max.		
V _{IH}	High Level Input Voltage	2.0 4.5 6.0		1.5 3.15 4.2	— — —	— — —	1.5 3.15 4.2	— — —	1.5 3.15 4.2	— — —	V	
V _{IL}	Low Level Input Voltage	2.0 4.5 6.0		— — —	— — —	0.5 1.35 1.8	— — —	0.5 1.35 1.8	— — —	0.5 1.35 1.8	V	
V _{OH}	High Level Output Voltage	2.0	V _I	I _O	1.9	2.0	—	1.9	—	1.9	—	V
		4.5	V _{IH} or V _{IL}	-20 μA	4.4	4.5	—	4.4	—	4.4	—	
		6.0		-4.0 mA	5.9	6.0	—	5.9	—	5.9	—	
4.5		-4.0 mA	4.18	4.31	—	4.13	—	4.10	—			
6.0		-5.2 mA	5.68	5.8	—	5.63	—	5.60	—			
V _{OL}	Low Level Output Voltage	2.0	V _{IH} or V _{IL}	20 μA	—	0.0	0.1	—	0.1	—	0.1	V
		4.5			—	0.0	0.1	—	0.1	—	0.1	
		6.0			—	0.0	0.1	—	0.1	—	0.1	
		4.5			4.0 mA	—	0.17	0.26	—	0.33	—	
6.0	5.2 mA	—	0.18	0.26	—	0.33	—	0.40				
I _I	Input Leakage Current	6.0	V _I = V _{CC} or GND	—	—	±0.1	—	±1.0	—	±1.0	μA	
I _{OZ}	3-State Output Off-State Current	6.0	V _I = V _{IH} or V _{IL} V _O = V _{CC} or GND	—	—	±0.5	—	±5.0	—	±10	μA	
I _{CC}	Quiescent Supply Current	6.0	V _I = V _{CC} or GND I _O = 0	—	—	4	—	40	—	80	μA	

SGS-THOMSON

AC ELECTRICAL CHARACTERISTICS ($V_{CC}=5V$, $T_A=25^{\circ}C$, $C_L=15pF$, Input $t_r=t_f=6ns$)

Symbol	Parameter	C_L (pF)	54HC and 74HC			Unit
			Min.	Typ.	Max.	
t_{TLH} t_{THL}	Output Transition Time	15		4	8	ns
t_{PLH} t_{PHL}	Propagation Delay Time (D - W)	15		18	29	ns
t_{PLH} t_{PHL}	Propagation Delay Time (D - Y)	15		17	27	ns
t_{PLH} t_{PHL}	Propagation Delay Time (A, B, C - W)	15		22	35	ns
t_{PLH} t_{PHL}	Propagation Delay Time (A, B, C - Y)	15		21	33	ns
t_{PZH} t_{PZL}	3-State Output Enable Time	15		11	18	ns
t_{PHZ} t_{PLZ}	3-State Output Disable Time	5		9	15	ns

SWITCHING CHARACTERISTICS TEST WAVEFORM



AC ELECTRICAL CHARACTERISTICS ($C_L = 50\text{pF}$, Input $t_r = t_f = 6\text{ns}$)

Symbol	Parameter	V_{CC}	Test Condition	$T_A = 25^\circ\text{C}$ 54HC and 74HC			-40 to 85°C 74HC		-55 to 125°C 54HC		Unit
				Min.	Typ.	Max.	Min.	Max.	Min.	Max.	
t_{LH} t_{THL}	Output Transition Time	2.0 4.5 6.0		— — —	30 8 7	75 15 13	— — —	95 19 16	— — —	110 22 19	ns
t_{PLH} t_{PHL}	Propagation Delay Time (D - W)	2.0 4.5 6.0		— — —	76 19 16	165 33 28	— — —	205 41 35	— — —	250 50 43	ns
t_{PLH} t_{PHL}	Propagation Delay Time (D - Y)	2.0 4.5 6.0		— — —	76 19 16	160 32 27	— — —	200 40 34	— — —	240 48 41	ns
t_{PLH} t_{PHL}	Propagation Delay Time (A, B, C - W)	2.0 4.5 6.0		— — —	96 24 20	205 41 35	— — —	255 51 43	— — —	310 62 53	ns
t_{PLH} t_{PHL}	Propagation Delay Time (A, B, C, - Y)	2.0 4.5 6.0		— — —	96 24 20	195 39 34	— — —	245 49 42	— — —	295 59 50	ns
t_{PZL} t_{PZH}	3 State Output Enable Time	2.0 4.5 6.0		— — —	52 13 11	105 21 18	— — —	130 26 22	— — —	160 32 27	ns
t_{PLZ} t_{PHZ}	3 State Output Disable Time	2.0 4.5 6.0		— — —	60 15 13	105 21 18	— — —	130 26 22	— — —	160 32 27	ns
C_{IN}	Input Capacitance			—	5	10	—	10	—	10	pF
C_{OUT}	Output Capacitance			—	10	—	—	—	—	—	pF
C_{PD} (*)	Power Dissipation Capacitance			—	100	—	—	—	—	—	pF

Note (*) C_{PD} is defined as the value of the IC's internal equivalent capacitance which is calculated from the operating current consumption without load. (Refer to test Circuit)

Average operating current can be obtained by the following equation. $I_{CC(opr)} = C_{PD} \cdot V_{CC} \cdot f_{IN} + I_{CC}$

TEST WAVEFORM I_{CC} (Opr.)

SGS-THOMSON

