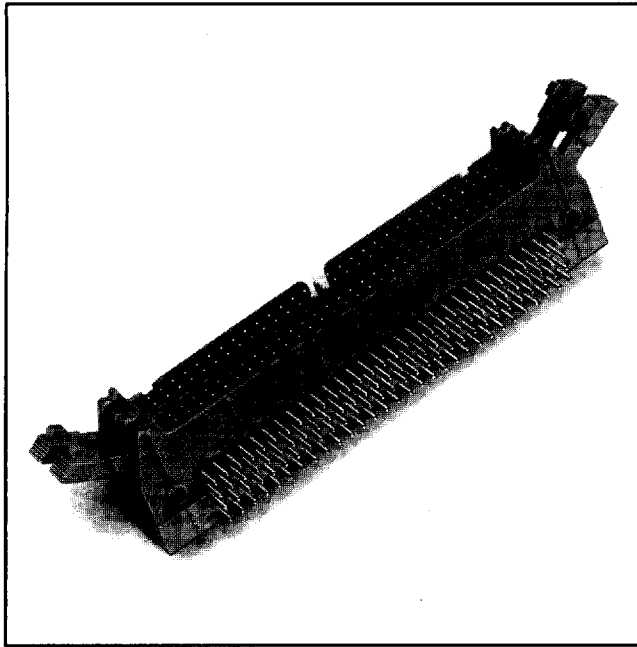


.100" × .100" Condo Header

Right Angle, 4 Wall/4 Wall, High Temp Option

3000 Series



- Stacked pins conserve space on the circuit board allowing higher density packaging
- Pin quantity to 128 gives design flexibility with latching
- "HDI" alternative
- Accepts standard IDC sockets
- Mates with standard flat cable harnesses
- High temperature option

TS-0774-01
Sheet 1 of 3

87

Physical

Insulation

Material: Glass Filled Polyester (PBT)
Glass Filled Polyester (PCT — High Temp Option)

Flammability: UL 94V-0

Color: Gray
Beige (High Temp Option)

Marking: 3M Logo, Part Identification Number and Orientation Triangle

Contact

Material: Copper Alloy

Plating

Underplate: 100 μ " [2.54 μ m] Nickel — QQ-N-290, Class 2
Wiping Area: 30 μ " [0.76 μ m] Gold — MIL-G-45204, Type II, Grade C
Solder Tails: 200 μ " [5.08 μ m] Tin Lead — MIL-P-81728

Electrical

Current Rating: 1 A

Insulation Resistance: $>1 \times 10^9 \Omega$ at 500 Vdc

Withstanding Voltage: 1000 Vrms at Sea Level

Environmental

Temperature Rating: -55°C to $+105^\circ\text{C}$

Process Rating: Maximum 235°C , with 90 seconds over 215°C , High Temperature only

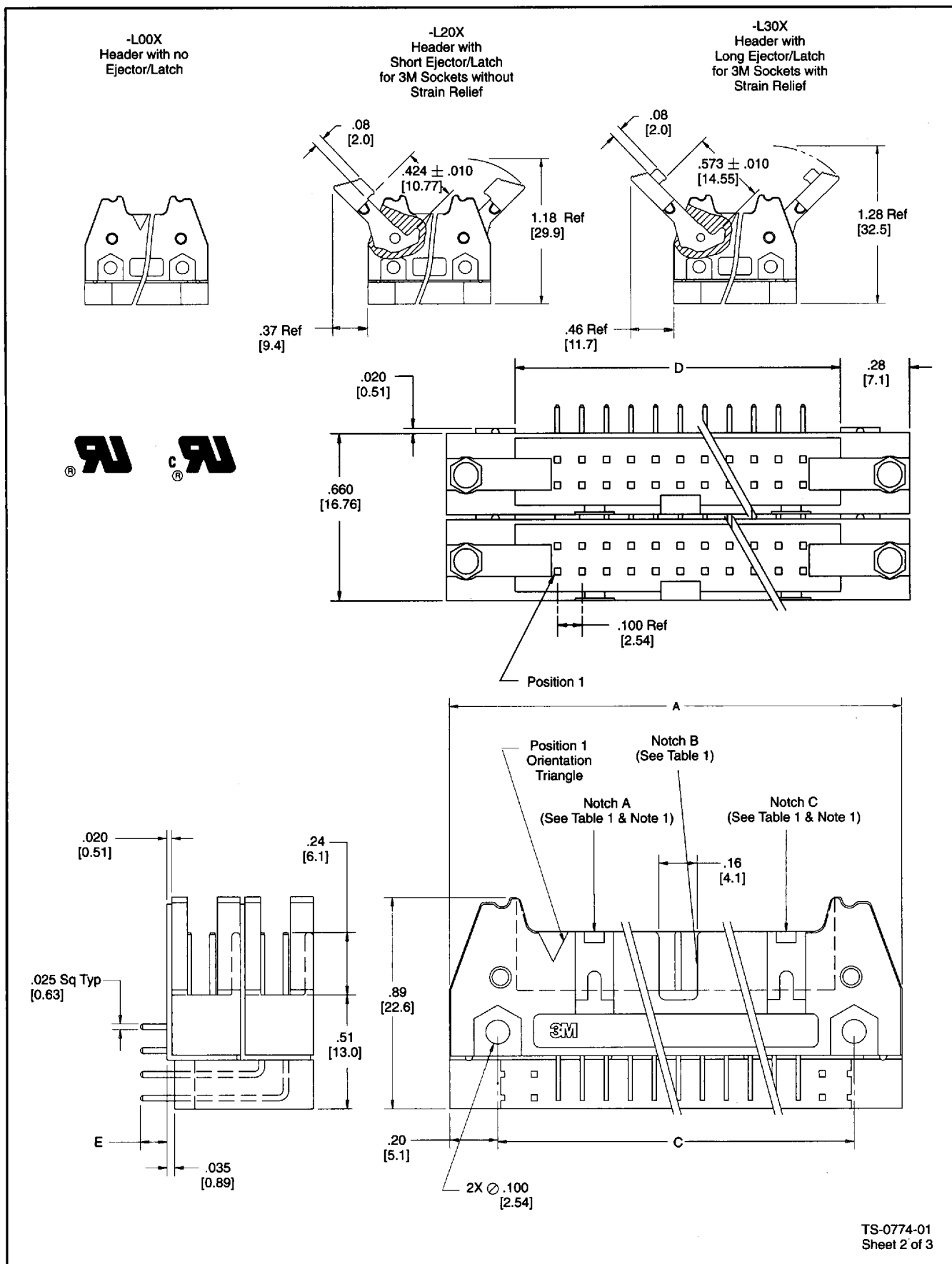
UL File No.: E68080

3M Electronic Products Division D 19F ■ 9035312 0004437 332 ■

.100" × .100" Condo Header

Right Angle, 4 Wall/4 Wall, High Temp Option

3000 Series



.100" × .100" Condo Header

Right Angle, 4 Wall/4 Wall, High Temp Option

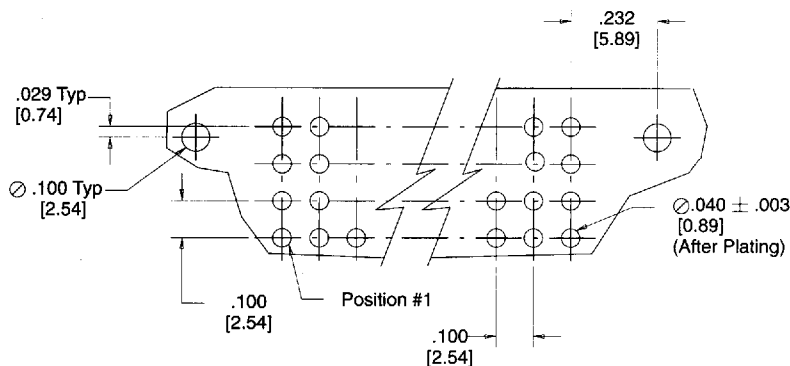
3000 Series

Table 1

Pin Quantity	Part Number	Dimensions			Polarization Notches
		A	C	D	
20	3793	1.26 [32.1]	0.865 [21.97]	0.71 [18.0]	B C
28	3314	1.46 [37.2]	1.065 [27.05]	0.91 [23.1]	B C
32	3408	1.56 [39.7]	1.165 [29.59]	1.01 [25.6]	A B C
40	3428	1.76 [44.8]	1.365 [34.67]	1.21 [30.7]	A B C
48	3627	1.96 [49.9]	1.565 [39.75]	1.41 [35.8]	A B C
52	3429	2.06 [52.4]	1.665 [42.29]	1.51 [38.3]	A B C
60	3440	2.26 [57.5]	1.865 [47.37]	1.71 [43.4]	A B C
68	3431	2.46 [62.6]	2.065 [52.45]	1.91 [48.5]	A B C
80	3432	2.76 [70.2]	2.365 [60.07]	2.21 [56.1]	A B C
100	3433	3.26 [82.9]	2.865 [72.77]	2.71 [68.8]	A B C
120	3372	3.76 [95.6]	3.365 [85.47]	3.21 [81.5]	A B C
128	3764	3.96 [100.7]	3.565 [90.55]	3.41 [86.6]	A B C

Table 2

3M Part Number Suffix	Contact Tail	Dim E ± .010
-XX02	02	0.112 [2.84]
-XX03	03*	0.155 [3.94]



Recommended Hole Pattern

Tolerance Unless Noted			
	.0	.00	.000
Inch	± .1	± .01	± .005

Note:
1. Notches A & C will accommodate 3M Polarizing Key 3518.

Ordering Information

XXXXX-LX0X

<p>Material Options: N = High Temperature Blank = Standard</p>	<p>3M Part Number</p>	<p>Tail 2 = Solder Tails for .062 [1.57] thick board 3 = Solder Tail for .094 to .125 [2.39 to 3.18] thick board * (Standard Product)</p>
<p>Latch/Ejector System 0 = No Latch/Ejectors 2 = Short, Roll Pin Latch/Ejectors (3M Part #3505-2) 3 = Long, Roll Pin Latch/Ejectors (3M Part #3505-3)</p>		

TS-0774-01
Sheet 3 of 3