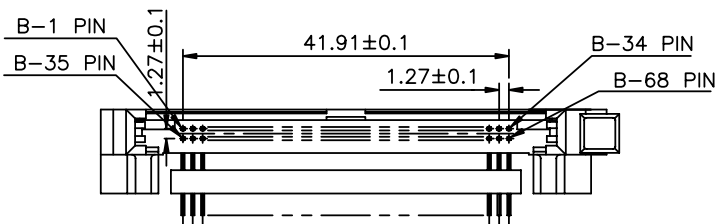
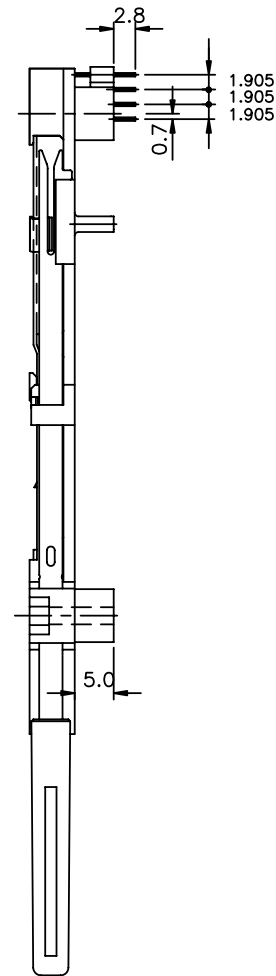
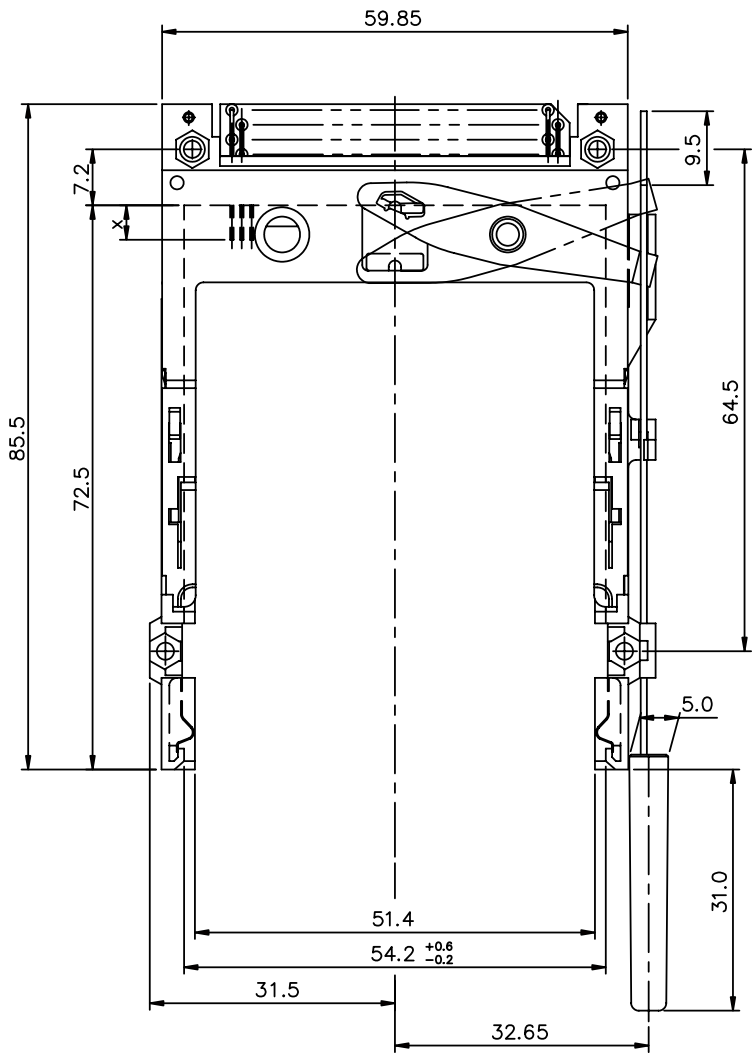


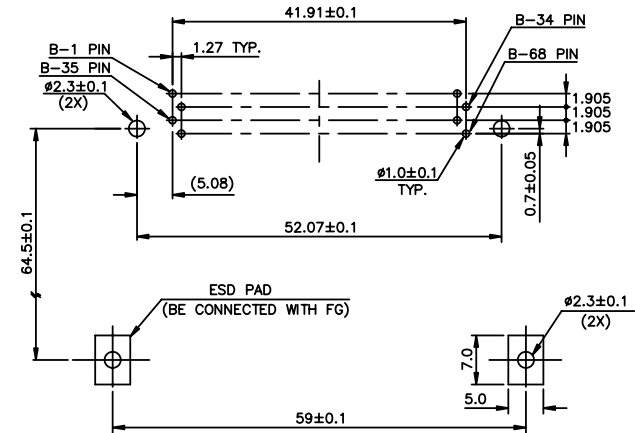
PRODUCT NO.
52218-050HA/050HALF



NOTES:

1. EJECT FORCE : 3.5 Kg MAX.
2. EJECT TRAVEL: 8.0mm
3. MATERIAL
 - 3.1 HEADER ASS'Y :
 - PLASTIC : HOUSING ...LCP UL94V-0 BLACK
 - : LOCATOR ...G.F. 6/6 NYLON UL94-VO BLACK
 - PIN : COPPER ALLOY
 - 3.2 EJECT MECHANISM ASS'Y :
 - PLASTIC : GUIDE: POLYPHTHARAMID UL94V-0 BLACK
 - : PUSH BUTTON: POLYPHTHARAMID UL94V-0 BLACK
 - PLATE : STAINLESS
 - EMI CONTACT: PHOSPHOR BRONZE
4. FINISH (PIN)
 - UNDER PLATING : 0.5µm MIN. Ni
 - CONTACT AREA : 0.1µm MIN. GOLD OVER 0.5µm MIN. Pd-Ni
 - SOLDER TAIL(TIN LEAD OPTION): 2.5µm MIN. Sn-Pb
 - SOLDER TAIL(LEAD FREE OPTION): 2.5µm MIN. PURE TIN
5. DIM "X"

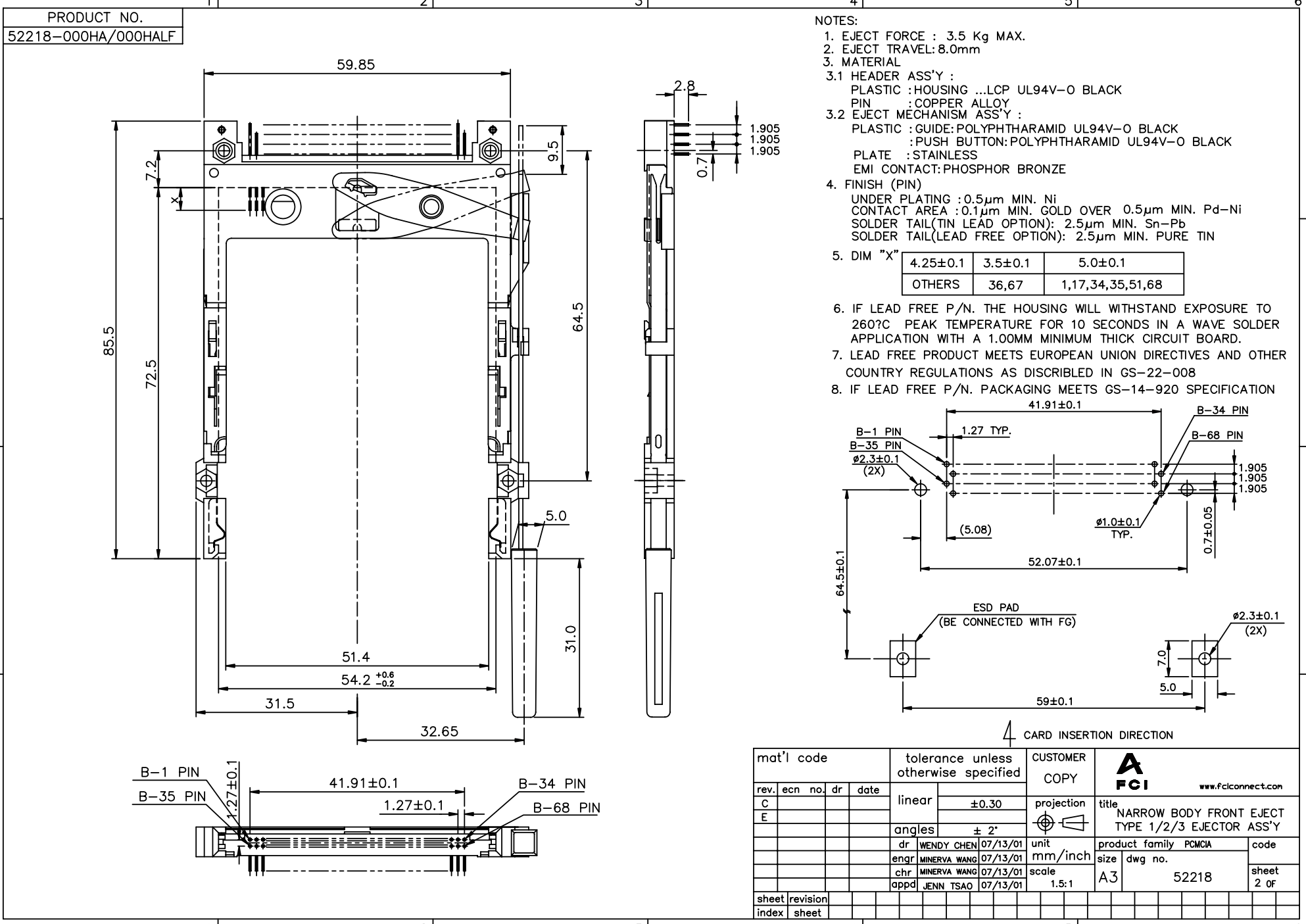
4.25±0.1	3.5±0.1	5.0±0.1
OTHERS	36,67	1,17,34,35,51,68
6. IF LEAD FREE P/N. THE HOUSING WILL WITHSTAND EXPOSURE TO 260°C PEAK TEMPERATURE FOR 10 SECONDS IN A WAVE SOLDER APPLICATION WITH A 1.00MM MINIMUM THICK CIRCUIT BOARD.
7. LEAD FREE PRODUCT MEETS EUROPEAN UNION DIRECTIVES AND OTHER COUNTRY REGULATIONS AS DISCRIBED IN GS-22-008
8. IF LEAD FREE P/N. PACKAGING MEETS GS-14-920 SPECIFICATION



mat'l code		tolerance unless otherwise specified		CUSTOMER COPY		 www.fciconnect.com	
rev.	ecn no.	dr	date	linear	±0.30	projection	title
A	T90060	WL	02/10/99				NARROW BODY FRONT EJECT TYPE 1/2/3 EJECTOR ASS'Y
B	T10194	WL	07/13/01				
C	T20166	WL	05/27/02	angles	± 2°		
D	T03-0405	WL	09/17/03	dr	WENDY CHEN	01/21/99	product family
E	N04-0105	WB	11/26/04	enrg	LEIF SHEN	01/21/99	PCMCIA
F	N04-0204	WB	07/12/05	chr	JOSEPH HSIA	01/21/99	code
G	N06-0065	MZ	03/17/06	appd	JENN TSAO	01/21/99	size
sheet	revision	E	E	E	G		scale
1	2	3	4				1.5:1
index	sheet						A3
							product family
							PCMCIA
							code
							52218
							sheet
							1 OF 4

Tous droits strictement réservés. Reproduction ou communication à des tiers sans autorisation écrite du propriétaire.
 Property of c BERG ELECTRONICS.
 Droits de reproduction BERG ELECTRONICS by

All rights strictly reserved. Reproduction or issue to third parties in any form without written authority from the proprietor.
 Property of c BERG ELECTRONICS.
 Copyright BERG ELECTRONICS by

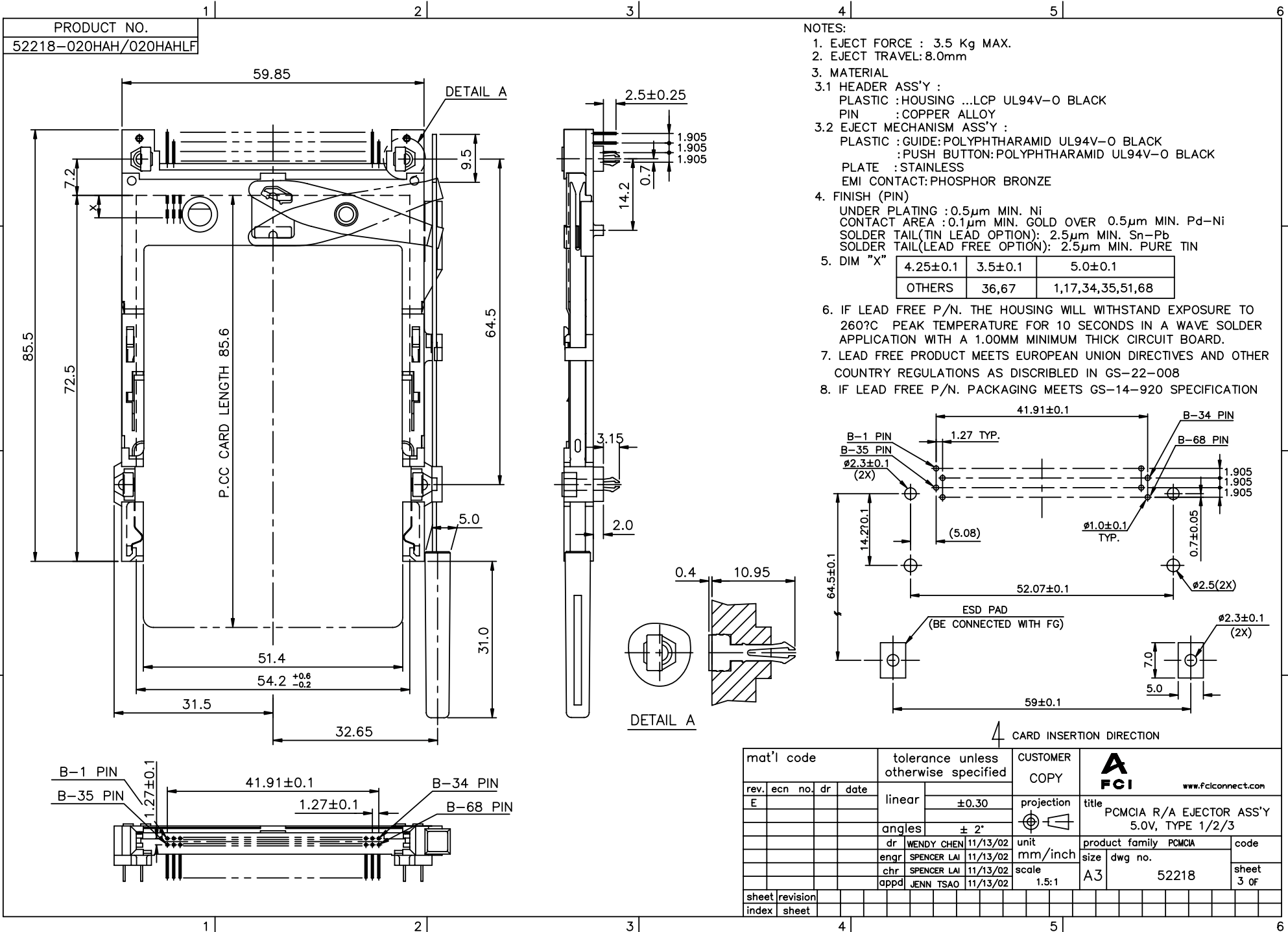


- PRODUCT NO.
52218-000HA/000HALF
- NOTES:
- EJECT FORCE : 3.5 Kg MAX.
 - EJECT TRAVEL: 8.0mm
 - MATERIAL
 - HEADER ASS'Y :
 PLASTIC : HOUSING ...LCP UL94V-0 BLACK
 PIN : COPPER ALLOY
 - EJECT MECHANISM ASS'Y :
 PLASTIC : GUIDE: POLYPHTHARAMID UL94V-0 BLACK
 : PUSH BUTTON: POLYPHTHARAMID UL94V-0 BLACK
 PLATE : STAINLESS
 EMI CONTACT: PHOSPHOR BRONZE
 - FINISH (PIN)
 UNDER PLATING : 0.5 μ m MIN. Ni
 CONTACT AREA : 0.1 μ m MIN. GOLD OVER 0.5 μ m MIN. Pd-Ni
 SOLDER TAIL(TIN LEAD OPTION): 2.5 μ m MIN. Sn-Pb
 SOLDER TAIL(LEAD FREE OPTION): 2.5 μ m MIN. PURE TIN
 - DIM "X"

4.25 \pm 0.1	3.5 \pm 0.1	5.0 \pm 0.1
OTHERS	36,67	1,17,34,35,51,68
 - IF LEAD FREE P/N. THE HOUSING WILL WITHSTAND EXPOSURE TO 260°C PEAK TEMPERATURE FOR 10 SECONDS IN A WAVE SOLDER APPLICATION WITH A 1.00MM MINIMUM THICK CIRCUIT BOARD.
 - LEAD FREE PRODUCT MEETS EUROPEAN UNION DIRECTIVES AND OTHER COUNTRY REGULATIONS AS DISCRIBED IN GS-22-008
 - IF LEAD FREE P/N. PACKAGING MEETS GS-14-920 SPECIFICATION

mat'l code		tolerance unless otherwise specified		CUSTOMER COPY	 www.fclconnect.com	
rev.	ecn no.	dr	date	linear	± 0.30	projection
C				angles	$\pm 2^\circ$	 title NARROW BODY FRONT EJECT TYPE 1/2/3 EJECTOR ASS'Y
E				dr	WENDY CHEN 07/13/01	unit
				enqr	MINERVA WANG 07/13/01	mm/inch
				chr	MINERVA WANG 07/13/01	scale
				appd	JENN TSAO 07/13/01	1.5:1
sheet	revision			product family	PCMCIA	code
index	sheet			size	dwg no.	sheet
				A3	52218	2 of

Tous droits strictement réservés. Reproduction ou communication à des tiers sans la permission écrite du propriétaire. Property of c BERG ELECTRONICS. Droits de reproduction BERG ELECTRONICS by
 All rights strictly reserved. Reproduction or issue to third parties in any form without written authority from the proprietor. Property of c BERG ELECTRONICS. Copyright BERG ELECTRONICS by



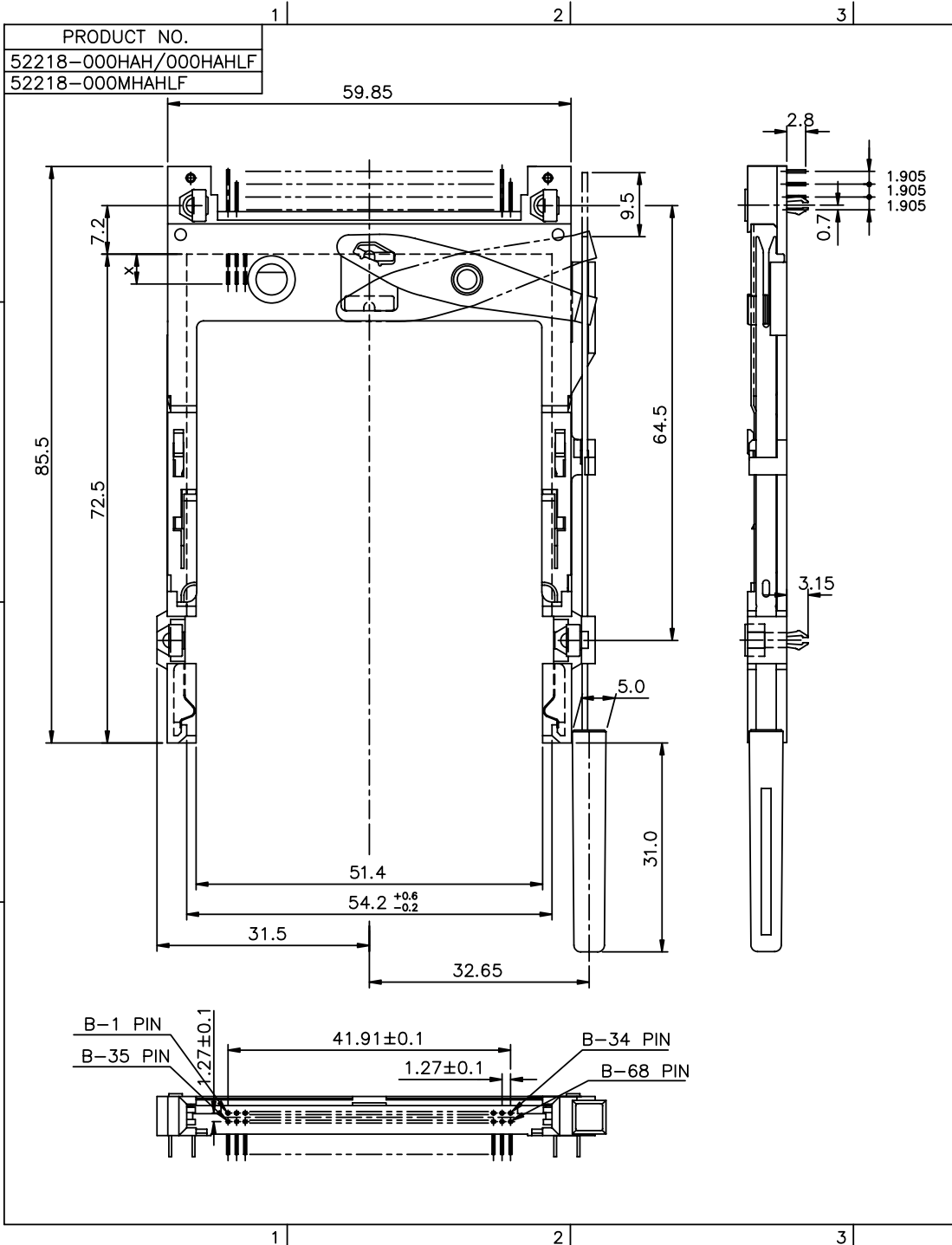
- NOTES:**
- EJECT FORCE : 3.5 Kg MAX.
 - EJECT TRAVEL: 8.0mm
 - MATERIAL**
 - HEADER ASS'Y :**
 PLASTIC : HOUSING ...LCP UL94V-O BLACK
 PIN : COPPER ALLOY
 - EJECT MECHANISM ASS'Y :**
 PLASTIC : GUIDE: POLYPHTHARAMID UL94V-O BLACK
 : PUSH BUTTON: POLYPHTHARAMID UL94V-O BLACK
 PLATE : STAINLESS
 EMI CONTACT: PHOSPHOR BRONZE
 - FINISH (PIN)**
 UNDER PLATING : 0.5µm MIN. Ni
 CONTACT AREA : 0.1µm MIN. GOLD OVER 0.5µm MIN. Pd-Ni
 SOLDER TAIL (TIN LEAD OPTION): 2.5µm MIN. Sn-Pb
 SOLDER TAIL (LEAD FREE OPTION): 2.5µm MIN. PURE TIN
 - DIM "X"**

4.25±0.1	3.5±0.1	5.0±0.1
OTHERS	36,67	1,17,34,35,51,68
 - IF LEAD FREE P/N. THE HOUSING WILL WITHSTAND EXPOSURE TO 260°C PEAK TEMPERATURE FOR 10 SECONDS IN A WAVE SOLDER APPLICATION WITH A 1.00MM MINIMUM THICK CIRCUIT BOARD.
 - LEAD FREE PRODUCT MEETS EUROPEAN UNION DIRECTIVES AND OTHER COUNTRY REGULATIONS AS DISCRIBED IN GS-22-008
 - IF LEAD FREE P/N. PACKAGING MEETS GS-14-920 SPECIFICATION

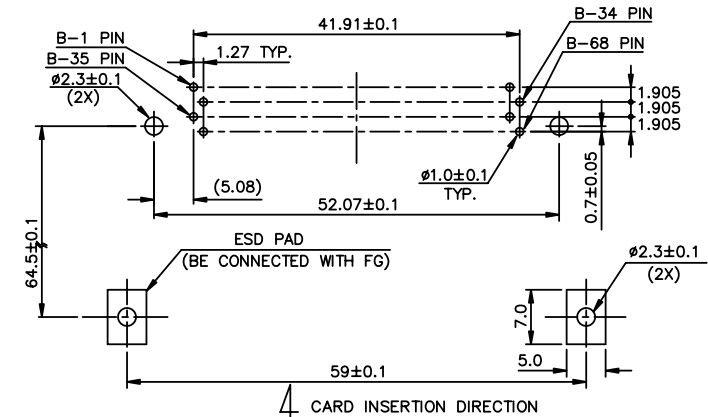
mat'l code		tolerance unless otherwise specified		CUSTOMER COPY		FCI www.fciconnect.com	
rev.	ecn no.	dr	date	linear	±0.30	projection	title
E				angles	± 2°		PCMCIA R/A EJECTOR ASS'Y 5.0V, TYPE 1/2/3
		dr	WENDY CHEN 11/13/02	unit	mm/inch	product family	PCMCIA
		enrg	SPENCER LAI 11/13/02	scale	1.5:1	size	dwg no.
		chr	SPENCER LAI 11/13/02			A3	52218
		appd	JENN TSAO 11/13/02				sheet 3 of
sheet	revision						
index	sheet						

Tous droits strictement réservés. Reproduction ou communication à des tiers sans autorisation écrite du propriétaire. Droits de reproduction BERG ELECTRONICS by

All rights strictly reserved. Reproduction or issue to third parties in any form without written authority from the proprietor. Property of BERG ELECTRONICS. Copyright BERG ELECTRONICS by



- NOTES:
- EJECT FORCE : 3.5 Kg MAX.
 - EJECT TRAVEL: 8.0mm
 - MATERIAL
 - HEADER ASS'Y :
HOUSING: PLASTIC, UL94V-0 BLACK
PIN : COPPER ALLOY
 - EJECT MECHANISM ASS'Y :
PLASTIC : GUIDE: POLYPHTHARAMID UL94V-0 BLACK
PUSH BUTTON: POLYPHTHARAMID UL94V-0 BLACK
PLATE : STAINLESS
EMI CONTACT: COPPY ALLOY
 - FINISH (PIN)
UNDER PLATING : 0.5µm MIN. Ni
CONTACT AREA : 0.1µm MIN. GOLD OVER 0.5µm MIN. Pd-Ni
SOLDER TAIL (TIN LEAD OPTION): 2.5µm MIN. Sn-Pb
SOLDER TAIL (LEAD FREE OPTION): 2.5µm MIN. PURE TIN
 - DIM "X"
- | | | |
|----------|---------|------------------|
| 4.25±0.1 | 3.5±0.1 | 5.0±0.1 |
| OTHERS | 36,67 | 1,17,34,35,51,68 |
- IF LEAD FREE P/N. THE HOUSING WILL WITHSTAND EXPOSURE TO 260°C PEAK TEMPERATURE FOR 10 SECONDS IN A WAVE SOLDER APPLICATION WITH A 1.00MM MINIMUM THICK CIRCUIT BOARD.
 - LEAD FREE PRODUCT MEETS EUROPEAN UNION DIRECTIVES AND OTHER COUNTRY REGULATIONS AS DISCRIBED IN GS-22-008
 - IF LEAD FREE P/N. PACKAGING MEETS GS-14-920 SPECIFICATION
 - "M" SHOWS IT IS SPECIAL VERSION, IT IS OPTIONAL AND IN FIRST OF LETTER OF PART NO., 52218-000MHAHLF IS SPECIAL VERSION. 52218-000HAHLF IS NOT SPECIAL VERSION. SPECIAL VERSION DETAIL REFER TO 52219 AND 92140



4 CARD INSERTION DIRECTION

mat'l code		tolerance unless otherwise specified		CUSTOMER COPY		FCI www.fciconnect.com		
rev.	ecn no.	dr	date	linear	±0.30	projection	title	
G				angles	± 2°		NARROW BODY FRONT EJECTOR TYPE 1/2/3 EJECTOR ASS'Y	
		dr	WENDY CHEN 07/13/01	unit	mm/inch	product family	PCMCIA	
		enqr	MINERVA WANG 07/13/01	size	dwg no.	code		
		chr	MINERVA WANG 07/13/01	scale	1.5:1	52218	sheet 4 of	
		appd	JENN TSAO 07/13/01					
sheet index	revision sheet							