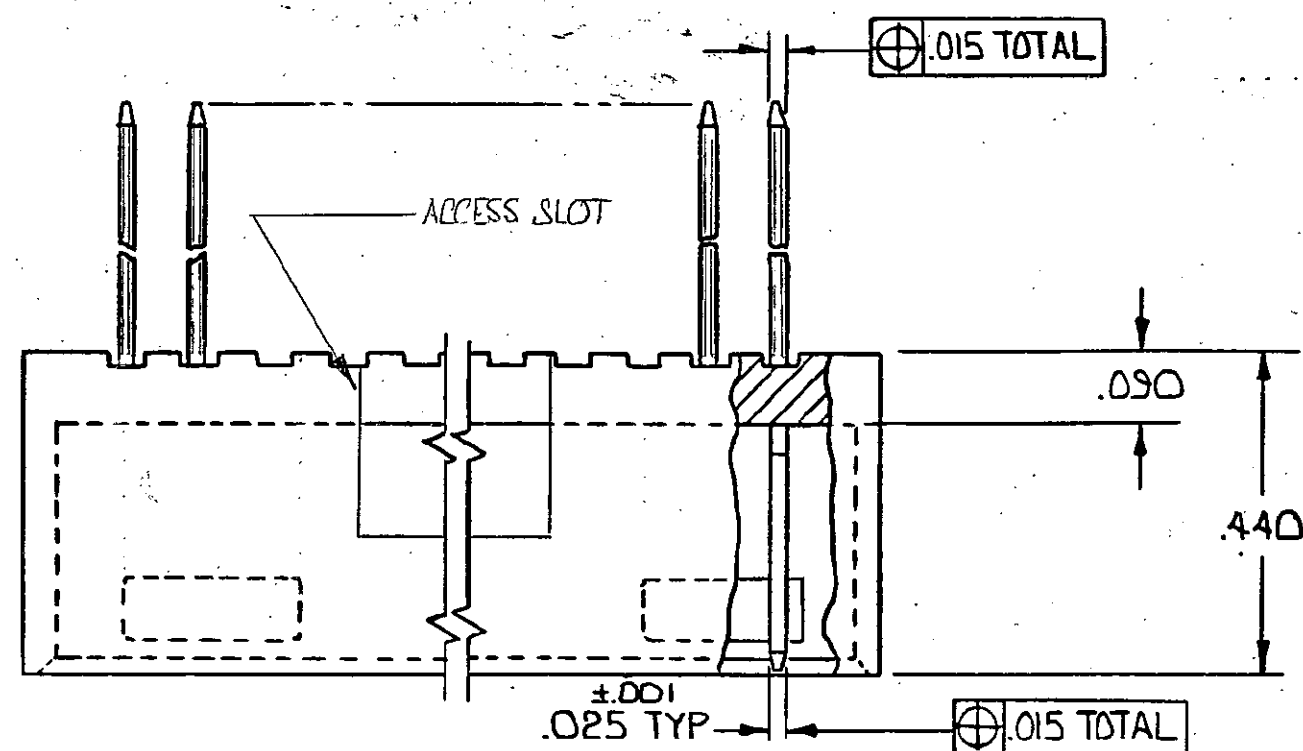
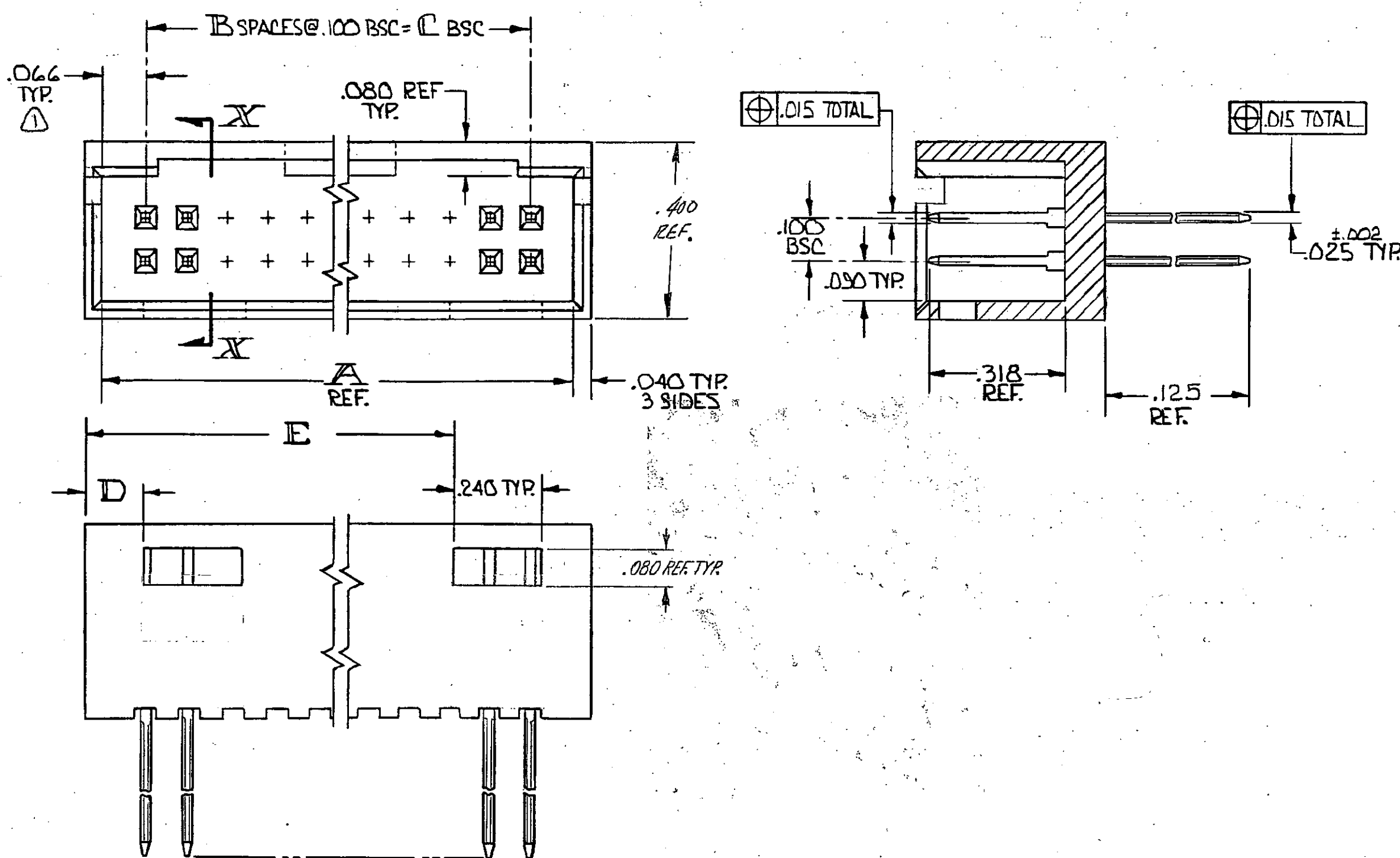


© COPYRIGHT 1975-83 BY AMP INCORPORATED, HARRISBURG, PA. ALL INTERNATIONAL RIGHTS RESERVED. AMP INCORPORATED PRODUCTS COVERED BY U. S. AND FOREIGN PATENTS AND/OR PATENTS PENDING.

| REVISIONS |   |      |     |  |                        |
|-----------|---|------|-----|--|------------------------|
| P         | F | ZONE | LTR | DESCRIPTION  | DATE APPROVED          |
|           |   |      | O   | ADDED DETENT & TITLE BLOCK COMMENT                 | 11-29-75 DMK EDD 11232 |
|           |   |      | A   | REV. POST & ADDED ACCESS SLOT & HOLE LAYOUT (1480) | 7-13-76 BAW            |
|           |   |      | A1  | REV. PER ECN 4620                                  | 2-25-83 RD             |
|           |   |      | B   | REV-ECN 179  | 5-8-84 JLN             |
|           |   |      | B1  | REV-ECN 403  | 10-26-84 WGL           |
|           |   |      | C   | Obsolete Desh. Nos. - ECN AR 2295                  | 4-11-87 JWP            |
|           |   |      | D   | REV LOC & DIST AD-4171                             | 11-27-89 BF            |
|           |   |      | E   | ECN AD-4707  | 8-23-90 KWH            |
|           |   |      | F   | REV PER 0010-0981-93                               | 9-93 RAC               |
|           |   |      | G   | EC 0010-0051-95                                    | 3/10/96 TH             |
|           |   |      | H   | EC 0010-0159-95                                    | 5/24/95 TH             |
|           |   |      | J   | REV PER 0310-0146-96                               | 5-27-97 EB             |
|           |   |      | X   | REV PER 0310-0428-97                               | 15 JAN 98 EB           |

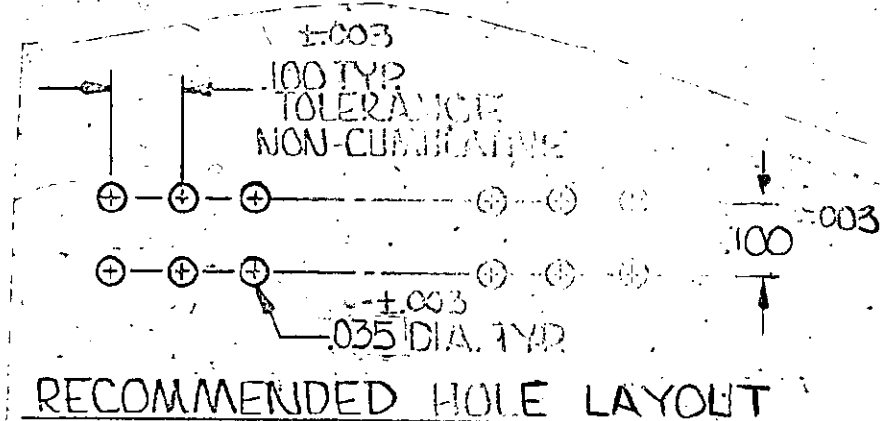


⚠ WILL ALSO MATE W/ OTHER CONNECTORS WHICH ARE COMPATIBLE WITH THE .066 END DIM.  
 ⚠ OBSOLETE PART NUMBER



|       |      |       |    |       |    |           |
|-------|------|-------|----|-------|----|-----------|
| —     | .106 | .200  | 2  | .332  | 6  | 3-87589-6 |
| —     | .106 | .300  | 3  | .432  | 8  | 3-87589-5 |
| 3.506 | .106 | 3.600 | 36 | 3.732 | 74 | 3- -3     |
| 3.406 |      | 3.500 | 35 | 3.632 | 72 | 3- -2     |
| 3.306 |      | 3.400 | 34 | 3.532 | 70 | 3- -1     |
| 3.206 |      | 3.300 | 33 | 3.432 | 68 | 3- -0     |
| 3.106 |      | 3.200 | 32 | 3.332 | 66 | 2- -9     |
| 3.006 |      | 3.100 | 31 | 3.232 | 64 | 2- -8     |
| 2.906 |      | 3.000 | 30 | 3.132 | 62 | 2- -7     |
| 2.806 |      | 2.900 | 29 | 3.032 | 60 | 2- -6     |
| 2.706 |      | 2.800 | 28 | 2.932 | 58 | 2- -5     |
| 2.606 |      | 2.700 | 27 | 2.832 | 56 | 2- -4     |
| 2.506 |      | 2.600 | 26 | 2.732 | 54 | 2- -3     |
| 2.406 |      | 2.500 | 25 | 2.632 | 52 | 2- -2     |
| 2.306 |      | 2.400 | 24 | 2.532 | 50 | 2- -1     |
| 2.206 |      | 2.300 | 23 | 2.432 | 48 | 2- -0     |
| 2.106 |      | 2.200 | 22 | 2.332 | 46 | 1- -9     |
| 2.006 |      | 2.100 | 21 | 2.232 | 44 | 1- -8     |
| 1.906 |      | 2.000 | 20 | 2.132 | 42 | 1- -7     |
| 1.806 |      | 1.900 | 19 | 2.032 | 40 | 1- -6     |
| 1.706 |      | 1.800 | 18 | 1.932 | 38 | 1- -5     |
| 1.606 |      | 1.700 | 17 | 1.832 | 36 | 1- -4     |
| 1.506 |      | 1.600 | 16 | 1.732 | 34 | 1- -3     |
| 1.406 |      | 1.500 | 15 | 1.632 | 32 | 1- -2     |
| 1.306 |      | 1.400 | 14 | 1.532 | 30 | 1- -1     |
| 1.206 |      | 1.300 | 13 | 1.432 | 28 | 1- -0     |
| 1.106 |      | 1.200 | 12 | 1.332 | 26 | -9        |
| 1.006 |      | 1.100 | 11 | 1.232 | 24 | -8        |
| .906  |      | 1.000 | 10 | 1.132 | 22 | -7        |
| .806  | .106 | .900  | 9  | 1.032 | 20 | -6        |
| —     | .406 | .800  | 8  | .932  | 18 | -5        |
| —     | .306 | .700  | 7  | .832  | 16 | -4        |
| —     | .306 | .600  | 6  | .732  | 14 | -3        |
| —     | .206 | .500  | 5  | .632  | 12 | -2        |
| —     | .206 | .400  | 4  | .532  | 10 | 87589 -1  |

A



|  |                                    |   |
|--|------------------------------------|---|
| UNLESS OTHERWISE SPECIFIED DIMENSIONS ARE IN INCHES.<br>TOLERANCES ON:<br>DECIMALS ±.003<br>ANGLES ±.005 | CONTRACT NO                        | AMP INCORPORATED<br>Harrisburg, Pa.   |
|  | DR<br><i>D. Bennett</i> 9/12/75    |   |
| MATERIAL<br>HSG. - GLASS FILLED NYLON<br>COLOR: BLACK<br>CONTACT - PHOS. BRONZE                          | CHK<br><i>D.M. Willett</i> 9/12/75 | NAME (MATES WITH MOD III OR LOCKING CLIP Ⓛ)<br>HEADER ASSEMBLY MOD II<br>.100 & .025 SQUARE POST<br>WITH DETENT |
|  | APPD<br><i>Bennett</i> 9/15/75     |   |
| FINISH<br>CONTACT - .000100-.000200<br>BRIGHT TIN-LEAD OVER .000030<br>NICKEL                            | APPD<br><i>C. Dopinski</i> 9/16/75 | SIZE CODE IDENT NO DRAWING NO<br><b>C 00779</b> 87589   |
|  | DSGN APPD                          |   |
| OTHER APPD   | SCALE                              | SHEET 1 of 1  |