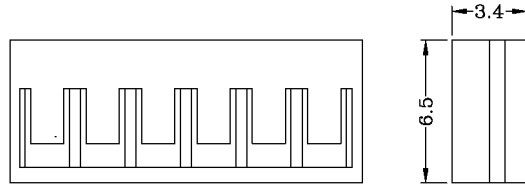
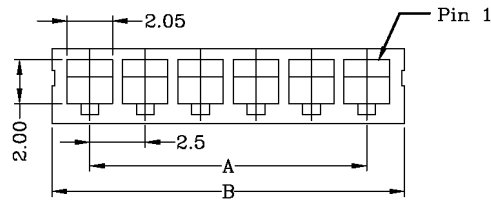
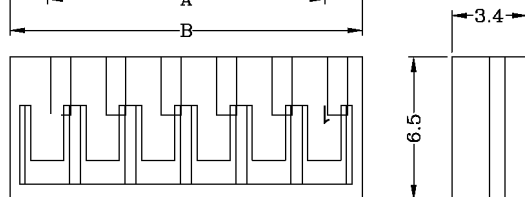
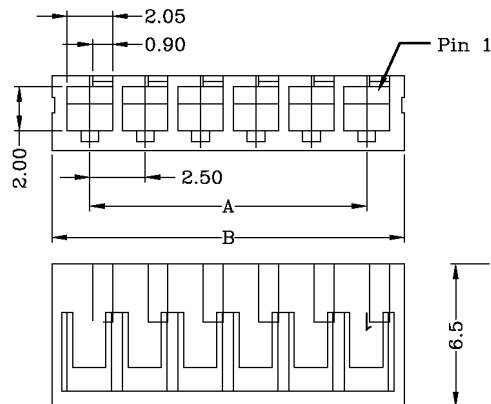


Material: Nylon 66, UL 94V-0, white

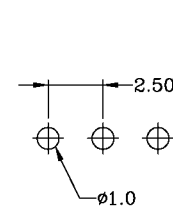
Dimensions		
Pos.	A	B
2	2.50	5.90
3	5.00	8.40
4	7.50	10.90
5	10.00	13.40
6	12.50	15.90
7	15.00	18.40
8	17.50	20.90
9	20.00	23.40
10	22.50	25.90
11	25.00	28.40
12	27.50	30.90
13	30.00	33.40
14	32.50	35.90
15	35.00	38.40
16	37.50	40.90
17	40.00	43.40
18	42.50	45.90
19	45.00	48.40
20	47.50	50.90



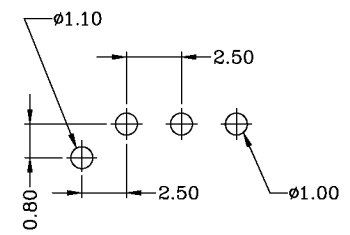
HV



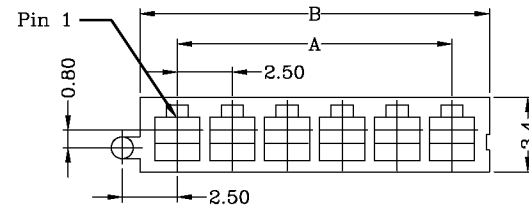
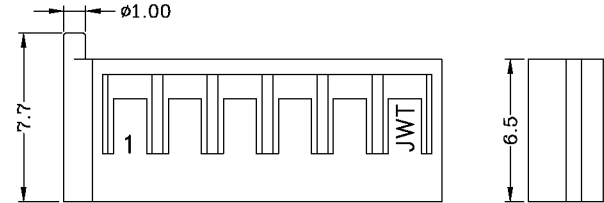
HR



HV/HR



HVP



HVP

RoHS compliant

Rev.	Description	Date	Approved	Drawing	Name	Date
				Approved	Howard	08/10/99
				Checked	Lizzy	08/10/99
				Drawn	Tina	08/10/99
				0.0 ± 0.35	0.00 ± 0.20	Angles ± 3'
				UNIT: mm		

Central Components Manufacturing
 440 Lincoln Blvd., Middlesex, New Jersey 08846
 Phone 732 469-5720 888 288-5152 Fax 732 469-1919

Part No.: **JS-A-2513-XXX-XX**

Description: Crimp terminal socket, 2.50mm pitch

