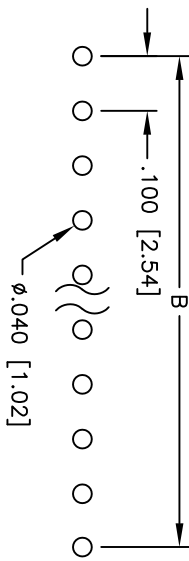
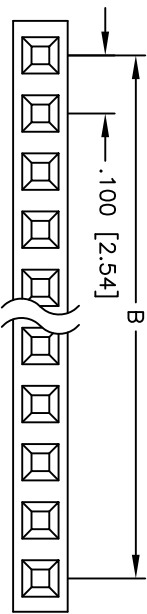
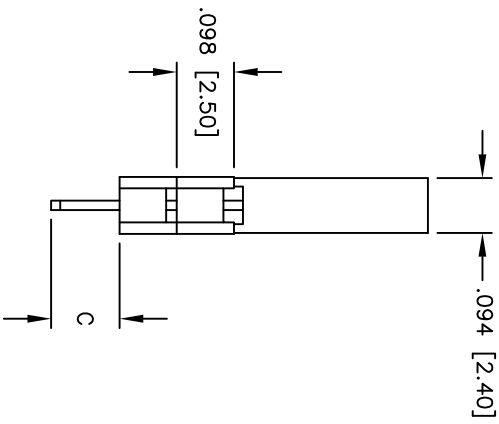
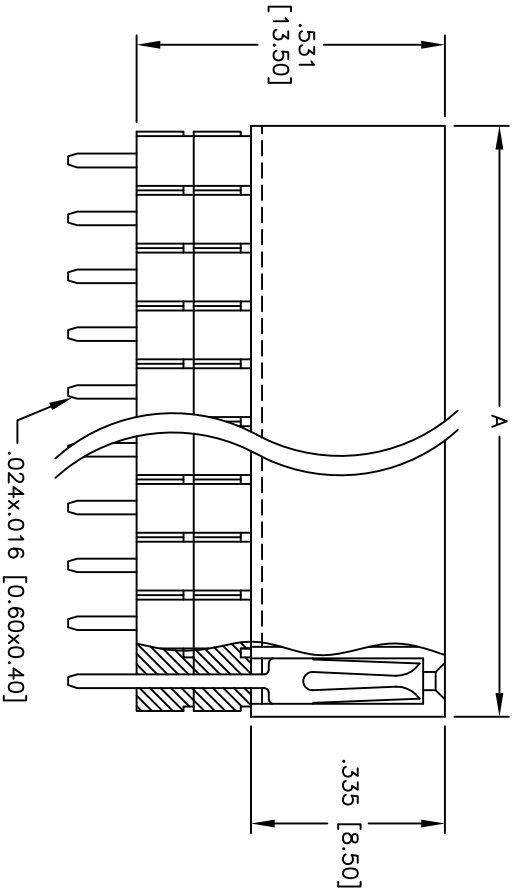


Rev	AWO #	Description	Date	Appr
-		RELEASED	6/2/05	

APPROVED: _____
 DATE: _____ TITLE: _____



RECOMMENDED
PCB LAYOUT



SPECIFICATIONS:

Material: PBT, glass reinforced, rated UL 94V-0
 Insulator color: Black
 Contacts: Brass
 Plating: Gold flash over Nickel underplate overall

Electrical:
 Operating voltage: 250 VAC max.
 Current rating: 3 Amps max.
 Contact resistance: 20 mohms max. initial
 Insulation resistance: 5,000 Mohms min.
 Dielectric withstanding voltage: 1,000 VAC for 1 minute

Temperature Rating:
 Operating temperature: -40°C to +105°C

Environmental:
 Lead free, RoHS compliant

Recommended soldering temp: 235°C for 5 seconds



Positions: 01 thru 40
 A = .100 [2.54] x No. of Positions + .020 [0.50]
 B = .100 [2.54] x No. of Spaces

PIN	DIMENSION
LENGTH	C
RSE1...-1	.091 [2.30]
RSE1...-2	.118 [3.00]
RSE1...-3	.315 [8.00]
RSE1...-4	.217 [5.50]
RSE1...-5	.380 [9.65]

UNLESS OTHERWISE SPECIFIED
 ALL DIMENSIONS ARE INCHES [MM]
 TOLERANCES: EXCEPT AS NOTED
 INCHES: .X ±.10 ØXX ±.10
 .XX ±.020 ØXXX ±.015
 .XXX ±.015
 APPROVALS: _____ DATE: _____
 DRAWN: SS 6/2/05
 CHECKED: _____
 APPROVED: _____

SIZE: X
 PART NO.: RSE1-2-XX-G-X
 SCALE: NTS
 SHEET 1 OF 1

ADAM TECH

909 Rahway Avenue, Union, NJ 07083
 Phone: 908-687-5000 Fax: 908-687-5710

TITLE: .100 [2.54] SINGLE ROW RECEPTACLE STRIP
 ELEVATED SOCKET, 2 INSULATORS

REV. _____