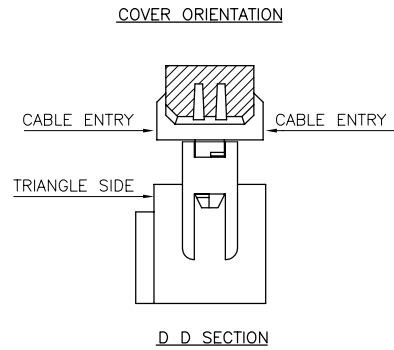
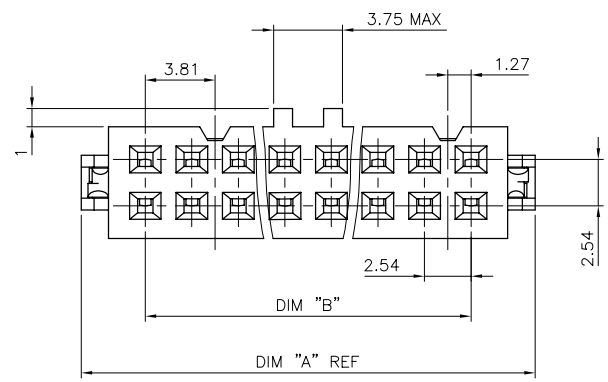


**NOTES:**

- 1 MATERIAL: BASE AND COVER: 30% GLASS FILLED POLYESTER FLAME RETARDANT PER UL-94-V0 COLOUR GREY  
STRAIN RELIEF: UNREINFORCED THERMOPLASTIC FLAME RETARDANT PER UL-94-V0 COLOUR GREY  
CONTACT: PHOSPHOR BRONZE
- 2 PLATING: 1.27 μm Au OVER 1.27 μm Ni IN CONTACT AREA REMAINDER OF PRODUCT (IDC PART) 1.27 μm TIN LEAD OVER 1.27 μm Ni
- 3 TRIANGLE NOT MOLDED-IN ON 2x2 AND 2x3 POSITIONS WITH CENTRAL KEY
- 4 FOR PRINTING SPECIFICATION SEE TA 345.
- 5 THE DASH "L" AT THE END OF PART NUMBER TO INDICATE A NEW LATCH DESIGN  
"COVER LATCH STYLE" IS THE MANUFACTURER'S OPTION. (P/N ENDING WITH OR WITHOUT AN "L").  
ORDERS WITH THE "L" DESIGNATION MUST CONTAIN THE NEW LATCH DESIGN.

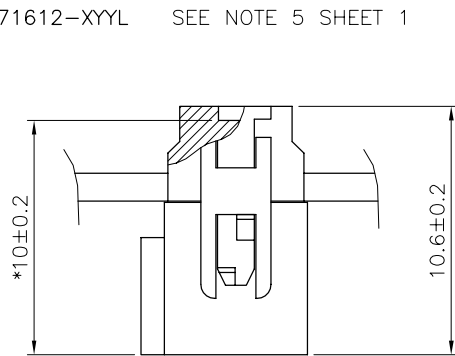


**CUSTOMER COPY FOR REFERENCE ONLY**

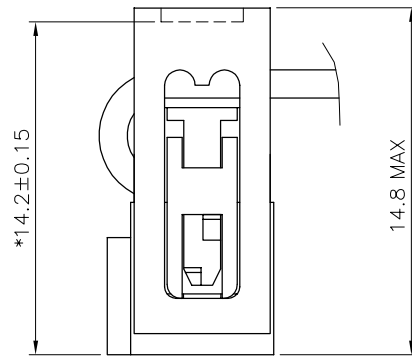
mat'l. code		SEE NOTES		tolerances unless otherwise specified		CUSTOMER COPY			
ltr	ecr no	dr	date	linear		projection	<b>QUICKIE III FEM</b> 1.27 μm Au		
G	F20083	GLE	92.02.11				product family	code	
H	F10566	DLE	01.10.24				QKIE FEM	213	
J	F03019	DLE	03.01.23	angles		mm [inch]	size	dwg no	sheet
						5:1	A2	71612	1 of 3
sheet	revision	J	J	H					
index	sheet	1	2	3					

PRODUCT NUMBER	SIZE	DIM "A"	DIM "B"	DIM "C"	DIM "S"	SLOT STYLE
71612-X04	2x 2	9.54	2.54	9.46	5.66	NO SLOT
71612-X06	2x 3	12.08	5.08	12.00	8.20	RIGHT IF NO KEY
71612-X08	2x 4	14.62	7.62	14.54	10.74	RIGHT IF NO KEY
71612-X10	2x 5	17.16	10.16	17.08	13.28	RIGHT SLOT
71612-X14	2x 7	22.24	15.24	22.16	18.36	RIGHT SLOT
71612-X16	2x 8	24.78	17.78	24.70	20.90	2 SLOTS
71612-X18	2x 9	27.32	20.32	27.24	23.44	2 SLOTS
71612-X20	2x 10	29.86	22.86	29.78	25.98	2 SLOTS
71612-X24	2x 12	34.94	27.94	34.85	31.06	2 SLOTS
71612-X26	2x 13	37.48	30.48	37.40	33.60	2 SLOTS
71612-X30	2x 15	42.56	35.56	42.48	38.68	2 SLOTS
71612-X34	2x 17	47.64	40.64	47.56	43.76	2 SLOTS
71612-X40	2x 20	55.26	48.26	55.18	51.38	2 SLOTS
71612-X44	2x 22	60.34	53.34	60.26	56.46	2 SLOTS
71612-X50	2x 25	67.96	60.96	67.88	64.08	2 SLOTS
71612-X60	2x 30	80.66	73.66	80.58	76.78	2 SLOTS
71612-X64	2x 32	85.74	78.74	85.66	81.86	2 SLOTS

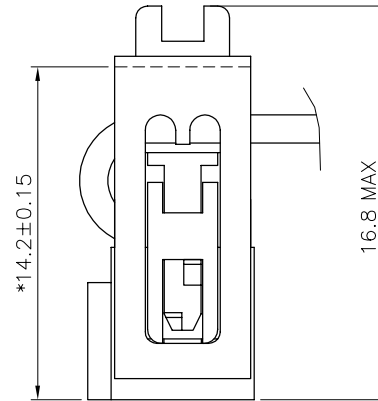
71612-XYL SEE NOTE 5 SHEET 1



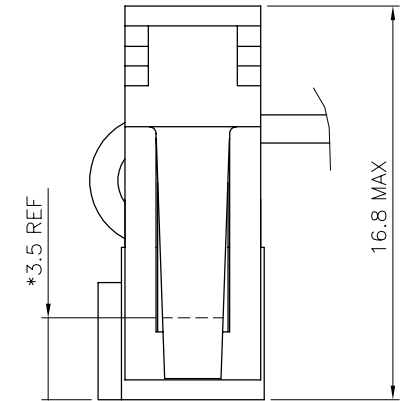
WITHOUT STRAIN RELIEF



WITH LOW PROFILE STRAIN RELIEF



WITH STANDARD STRAIN RELIEF



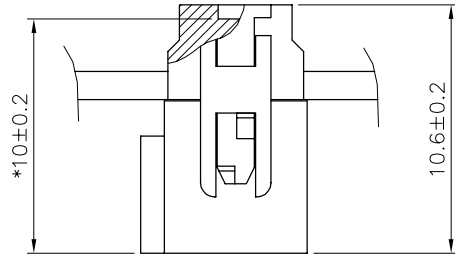
WITH LATCHING STRAIN RELIEF

AFTER TERMINATION SIDE VIEW OF ASSEMBLY (\* LATCHING DIM ON HEADER)

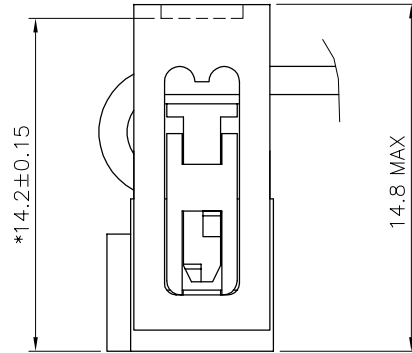
71612-7YY		●			●	724	
71612-6YY	●				●	624	
71612-5YY		●		●		504 524 530	
71612-4YY		●		●			
71612-3YY		●	●			304	
71612-2YY	●			●		204 224 230	
71612-1YY	●			●			
71612-0YY	●		●			004	
PRODUCT NUMBER	WITH CENTRAL KEY	WITHOUT CENTRAL KEY	STANDARD STRAIN RELIEF	WITHOUT STRAIN RELIEF	LOW PROFILE STRAIN RELIEF	LATCHING STRAIN RELIEF	DASHES NOT AVAILABLE

mat'l. code		tolerances unless otherwise specified		CUSTOMER COPY		FCI ELECTRONICS	
ltr	ecn no	dr	date	linear	projection	title QUICKIE III FEM	
G	F20083	GLE	91.10.31		⊕	1.27 μm Au	
H	F10566	DLE	01.10.24	angles	mm [inch]	product family	code
J	F03019	DLE	03.01.23		N/A	QKIE FEM	213
		dr	VAUTHIER	91.10.31		size	sheet
		enr	JM PHAMVAN	91.10.31		dwg no	2 of -
		chr	O MATHEVON	91.10.31			
		app	JM P	91.10.31			
sheet index	revision sheet						

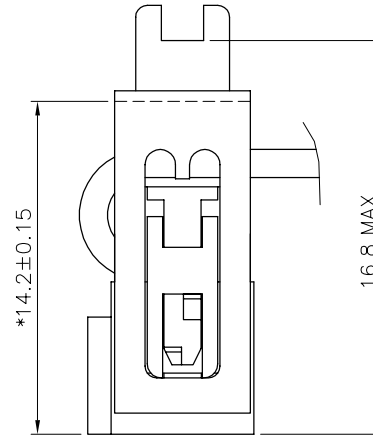
PRODUCT NUMBER	SIZE	DIM "A"	DIM "B"	DIM "C"	DIM "S"	SLOT STYLE
71612-X16H	2x 8	24.78	17.78	24.70	20.90	2 SLOTS
71612-X34H	2x 17	47.64	40.64	47.56	43.76	2 SLOTS



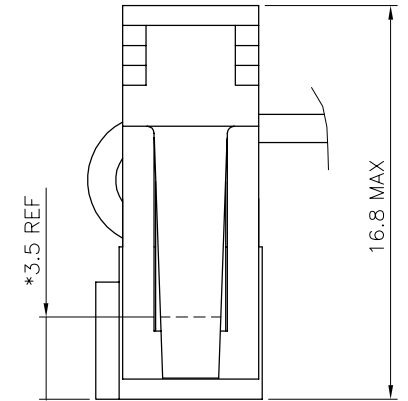
WITHOUT STRAIN RELIEF



WITH LOW PROFILE STRAIN RELIEF



WITH STANDARD STRAIN RELIEF



WITH LATCHING STRAIN RELIEF

AFTER TERMINATIO SIDE VIEW OF ASSEMBLY (\* LATCHING DIM ON HEADER)

5 A DASH "H" AT THE END OF THE PART NUMBER TO INDICATE A HIGH RETENTION PRODUCT

71612-7YYH		⊙				⊙
71612-6YYH	⊙					⊙
71612-5YYH		⊙			⊙	
71612-4YYH		⊙		⊙		
71612-3YYH		⊙	⊙			
71612-2YYH	⊙				⊙	
71612-1YYH	⊙			⊙		
71612-0YYH	⊙		⊙			
PRODUCT NUMBER	WITH CENTRAL KEY	WITHOUT CENTRAL KEY	STANDARD STRAIN RELIEF	WITHOUT STRAIN RELIEF	LOW PROFILE STRAIN RELIEF	LATCHING STRAIN RELIEF

mat'l. code		tolerances unless otherwise specified		CUSTOMER COPY		FCI ELECTRONICS	
ltr	ecn no	dr	date	linear	projection	title	
G	F20083	GLE	91.10.31			QUICKIE III FEM	
H	F10566	DLE	01.10.24			1.27 μm Au	
				angles	mm [inch]	product family	code
				dr VAUTHIER	91.10.31	QKIE FEM	213
				engn JM PHAMVAN	91.10.31	size	dwg no
				chr O MATHEVON	91.10.31	A2	71612
				appd JM P	91.10.31	scale	N/A
sheet index	revision sheet						sheet 3 of 3