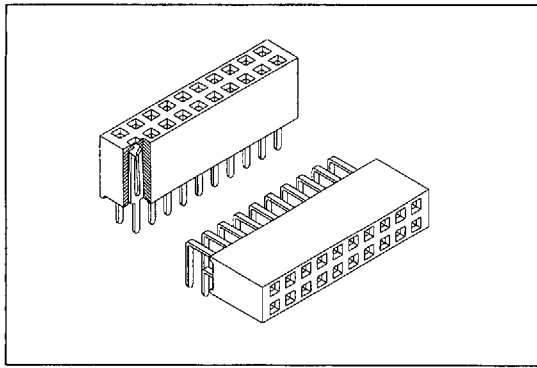


2044 SERIES

P.C.B. SOCKET 2.54mm X 2.54mm (0.100" X 0.100")



Material:

Housing: 30% Glass filled PBT UL94V-0.
 Contacts: Phosphor Bronze.
 Plating: Gold plated: $5\mu''$ over $50\mu''$ nickel.
 Tin plated: $150\mu''$ over $70\mu''$ nickel.

Electrical Characteristics:

Current Rating: 1 AMP
 Insulator Resistance: 5000M Ω min. at DC 500V
 Contact Resistance: 20m Ω max. at DC 100mA
 Operating Temperature: $-55^{\circ}\text{C} \sim +105^{\circ}\text{C}$

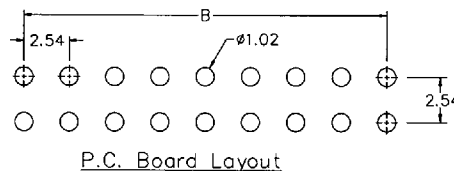
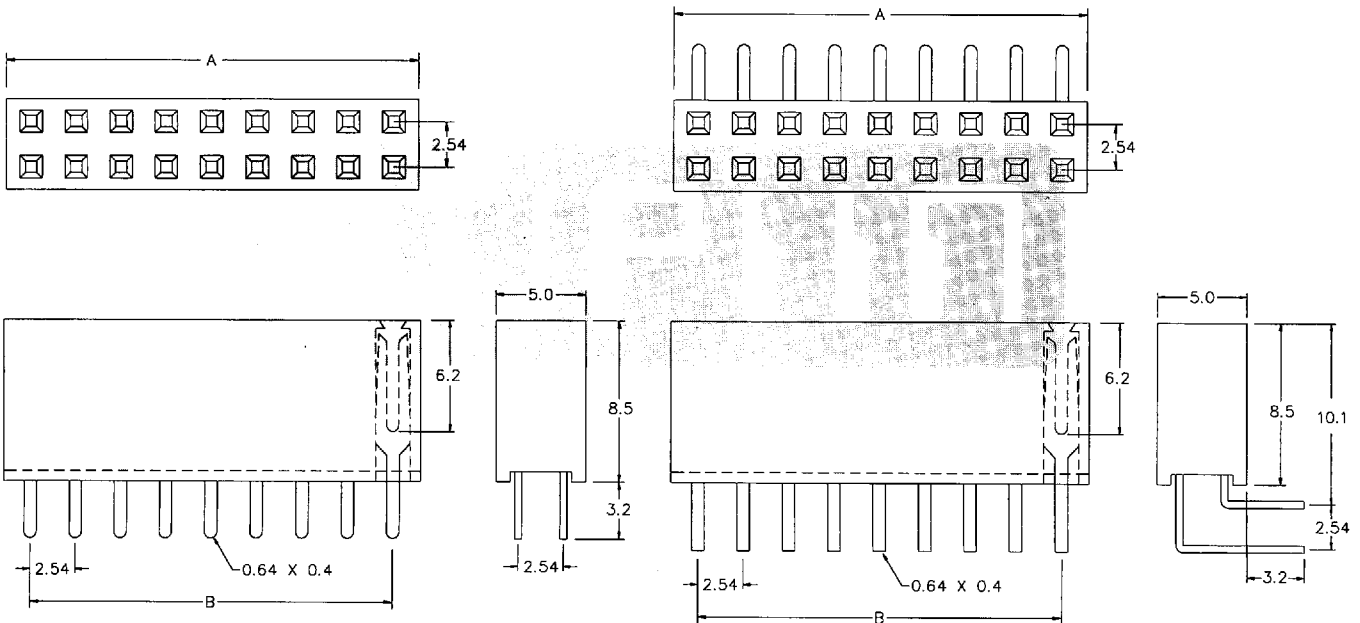
Mechanical Characteristics:

Insertion Force: 140g avg. (0.64mm sq. pin)
 Withdrawal Force: 114g avg. (0.64mm sq. pin)

Features:

- * Available in both Straight and Right Angle.
- * High profile 8.50mm (0.335").
- * Mates with 0.64mm (0.025") square pin.
- * Turning fork contacts offer lower cost for competitive market.

Mates with: 2011,2012,2013,2015,3012,3016.



Position	4 Thru 80
Dimension	
A	2.54 X No. of Positions +0.5
B	2.54 X No. of Positions -2.54

Ordering information

2044-2 X
 Series Double Row

40
 No. of Pin Per Row

G
 G: Gold Plated
 T: Tin Plated

S
 S: Straight
 R: Right Angle