

## FEATURES AND SPECIFICATIONS

### Features and Benefits

- Sizes 3 to 15 circuits

### Reference Information

Packaging: Tray  
 Mates With: 3022-NA  
 Mated Height: 11.90mm (.469")  
 Mated Width: 4.70mm (.185")  
 Designed In: Millimeters

### Electrical

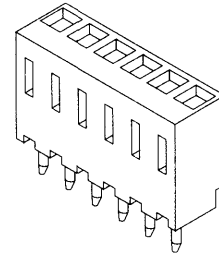
Voltage: 250V  
 Current: 3.0A  
 Contact Resistance: 20mΩ max.  
 Dielectric Withstanding Voltage: 1000V AC/1 min.  
 Insulation Resistance: 1000 MΩ min.

### Physical

Housing: 6/6 nylon, UL 94V-0  
 Contact: Phosphor Bronze  
 Plating: Tin  
 Operating Temperature: -40 to +105°C

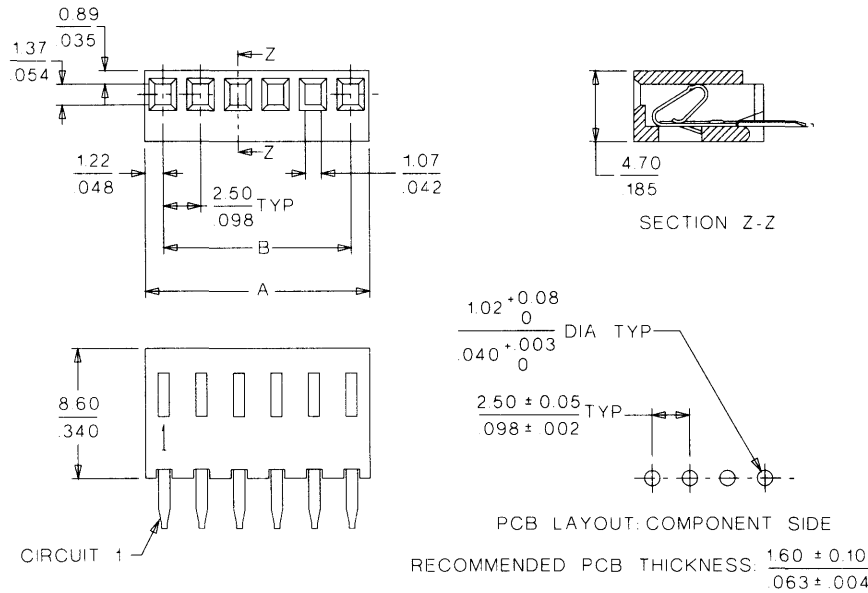
# molex® 2.50mm (.098") Pitch Board-to-Board Receptacle

## 5224-NCHPB Single Row



2.00 to 2.50mm (.079 to .098") Pitch

### CATALOG DRAWING (FOR REFERENCE ONLY)



### ORDERING INFORMATION AND DIMENSIONS

Circuits	Order No.	Dimension	
		A	B
3	22-02-3034	7.44 (.293)	5.00 (.196)
4	22-02-3044	9.94 (.391)	7.50 (.295)
5	22-02-3054	12.44 (.490)	10.00 (.393)
6	22-02-3064	14.94 (.588)	12.50 (.492)
7	22-02-3074	17.44 (.687)	15.00 (.590)
8	22-02-3084	19.94 (.785)	17.50 (.688)
9	22-02-3094	22.44 (.883)	20.00 (.787)
10	22-02-3104	24.94 (.982)	22.50 (.885)
11	22-02-3114	27.44 (1.080)	25.00 (.984)
12	22-02-3124	29.94 (1.179)	27.50 (1.082)
13	22-02-3134	32.44 (1.277)	30.00 (1.181)
14	22-02-3144	34.94 (1.376)	32.50 (1.279)
15	22-02-3154	37.44 (1.474)	35.00 (1.377)