

*** 2509 V SERIES ***

RoHS COMPLIANT

MATERIAL:

* INSULATOR:UL 94V-0 NYLON 6/6

* CONTACT:BRASS

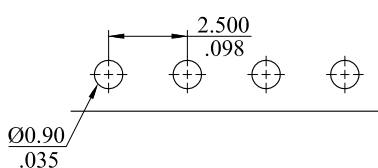
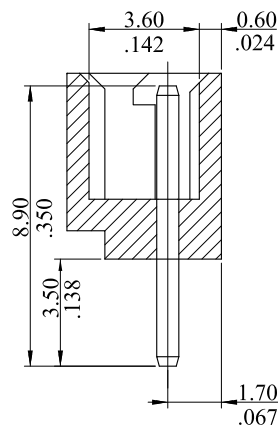
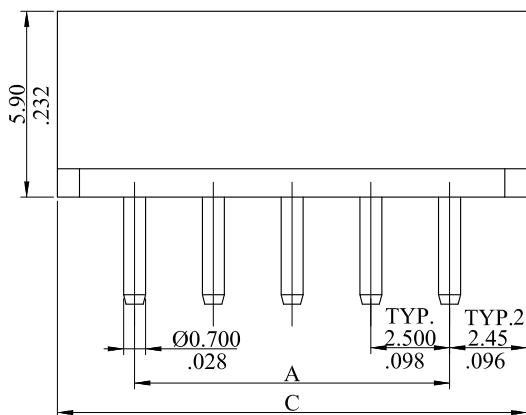
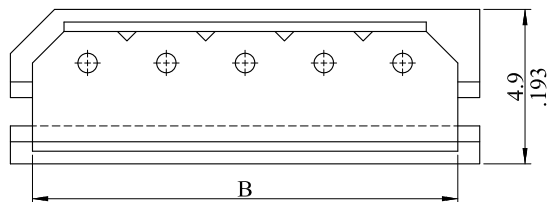
2509P ** V * 00
 $\frac{1}{2}$

1.No.of circuits

2.Plating:

O= Tin plated 120u"min over 30u"min.nickel overall

U=Gold flash over 30u"min. nickel overall



RECOMMENDED HOLE PATTERN

2509P15V*00	35.00(1.378)	38.50(1.516)	39.9(1.571)
2509P14V*00	32.50(1.280)	36.00(1.417)	37.4(1.472)
2509P13V*00	30.00(1.181)	33.50(1.319)	34.9(1.374)
2509P12V*00	27.50(1.083)	31.00(1.220)	32.4(1.276)
2509P11V*00	25.00(.984)	28.50(1.122)	29.9(1.177)
2509P10V*00	22.50(.886)	26.00(1.024)	27.4(1.079)
2509P09V*00	20.00(.787)	23.50(.925)	24.9(.980)
2509P08V*00	17.50(.689)	21.00(.827)	22.4(.882)
2509P07V*00	15.00(.591)	18.50(.728)	19.9(.783)
2509P06V*00	12.50(.492)	16.00(.630)	17.4(.685)
2509P05V*00	10.00(.394)	13.50(.531)	14.9(.587)
2509P04V*00	7.500(.295)	11.000(.433)	12.4(.488)
2509P03V*00	5.000 (.197)	8.500(.335)	9.9(.390)
2509P02V*00	2.500(.098)	6.000(.236)	7.4(.291)
PART NO.	DIM A	DIM B	DIM C

				leoco LEOCO CORPORATION		APPROVED:		PART NO.: 2509P**V*00					
D	ES101254			GENERAL TOLERANCES: (UNLESS SPECIFIED)		DATE:		TITLE: HEADER					
C	ES061012					CHECKED:							
B	ES990130					DATE:		DRAWING NO.: 250903S					
A	DWG REL					DRAWN:							
REV.	ECO. NO.	CHG.	APP.			DATE:							
				ANGULAR ± (1°)				UNITS		SCALE	SIZE	SHEET	REV.
								$\frac{\text{mm}}{\text{inch}}$		4:1	A4	1/1	D