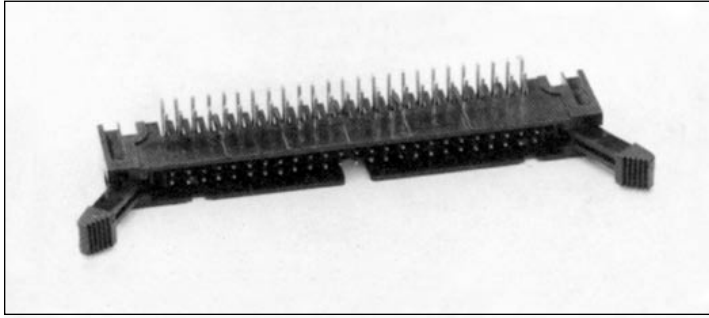


.100" (2.54mm) Dual Row, Through Hole, Right Angle Shrouded Header with Ejector Lever



9100 SERIES ("POST/BOXE")

PART NUMBER LEGEND

91XX-X5-2XX-01

NUMBER OF POSITIONS
(SEE TABLE II)

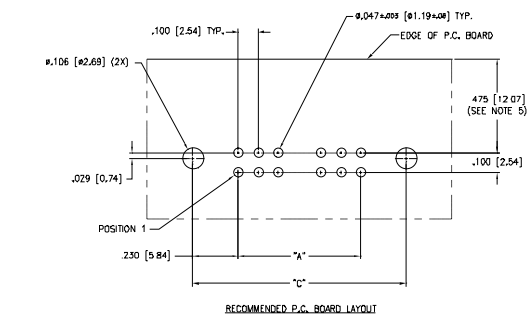
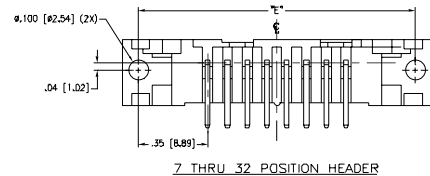
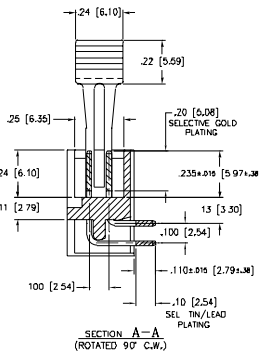
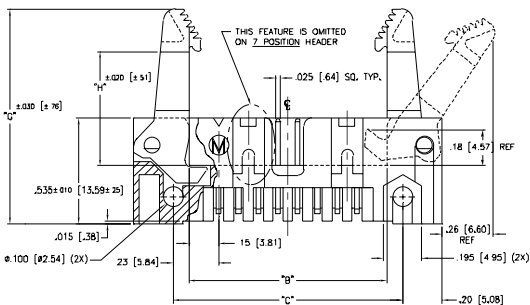
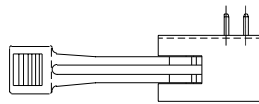
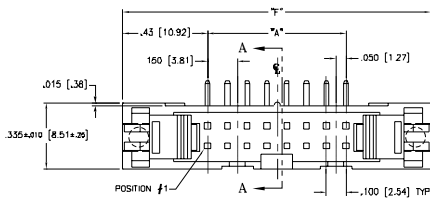
EJECTOR TYPE
(SEE TABLE I)

PIN PLATING
(SEE NOTE 4)

INSULATOR MATERIAL
(SEE NOTE 2)

NOTES:

- ALL DIMENSIONS ARE IN IN./MM
- INSULATOR MATERIAL: GLASS-FILLED POLYESTER
- PIN MATERIAL: PHOSPHOR BRONZE
- PIN FINISH:
 - 9100 - TIN/LEAD OVER NICKEL PLATE
 - 9108 - .0005SD NICKEL PLATE ALL OVER; .00003SD SELECTIVE GOLD IN MATING AREA; .0001-.0002 SEL. TIN/LEAD ON SOLDER TAIL
 - 910E - .0005SD NICKEL PLATE ALL OVER; .000015 SELECTIVE GOLD IN MATING AREA; .0001-.0002 SEL. TIN/LEAD ON SOLDER TAIL
- MAXIMUM DISTANCE FROM EDGE OF P.C. BOARD FOR DUST-CHAIN APPLICATION.



PART NO.	DIM. "G"	DIM. "H"
910X-[5-XXX]-01	1.090 [27.69]	576 [14.63]
910X-[45-XXX]-01	.940 [23.88]	426 [10.82]

PART NO.	No. of Circuits	DIM. "A"	DIM. "B"	DIM. "C"	DIM. "E"	DIM. "F"
910X-X5-X05-01	10	400 [10.16]	800 [20.32]	800 [20.32]	1,100 [27.94]	1,260 [32.00]
-X06-	12	500 [12.70]	800 [20.32]	960 [24.38]	1,200 [30.48]	1,360 [34.54]
-207-	14	600 [15.24]	.900 [22.86]	1,060 [26.92]	1,300 [33.02]	1,460 [37.08]
-208-	16	700 [17.78]	1,000 [25.40]	1,160 [29.46]	1,400 [35.56]	1,560 [39.62]
-209-	18	.800 [20.32]	1,100 [27.94]	1,260 [32.00]	1,500 [38.10]	1,660 [42.16]
-210-	20	900 [22.86]	1,200 [30.48]	1,360 [34.54]	1,600 [40.64]	1,760 [44.70]
-211-	22	1,000 [25.40]	1,300 [33.02]	1,460 [37.08]	1,700 [43.18]	1,860 [47.24]
-212-	24	1,100 [27.94]	1,400 [35.56]	1,560 [39.62]	1,800 [45.72]	1,960 [49.78]
-213-	26	1,200 [30.48]	1,500 [38.10]	1,660 [42.16]	1,900 [48.26]	2,060 [52.32]
-214-	28	1,300 [33.02]	1,600 [40.64]	1,760 [44.70]	2,000 [50.80]	2,160 [54.86]
-215-	30	1,400 [35.56]	1,700 [43.18]	1,860 [47.24]	2,100 [53.34]	2,260 [57.40]
-216-	32	1,500 [38.10]	1,800 [45.72]	1,960 [49.78]	2,200 [55.88]	2,360 [59.94]
-217-	34	1,600 [40.64]	1,900 [48.26]	2,060 [52.32]	2,300 [58.42]	2,460 [62.48]
-218-	36	1,700 [43.18]	2,000 [50.80]	2,160 [54.86]	2,400 [60.96]	2,560 [65.02]
-219-	38	1,800 [45.72]	2,100 [53.34]	2,260 [57.40]	2,500 [63.50]	2,660 [67.56]
-220-	40	1,900 [48.26]	2,200 [55.88]	2,360 [59.94]	2,600 [66.04]	2,760 [70.10]
-221-	42	2,000 [50.80]	2,300 [58.42]	2,460 [62.48]	2,700 [68.58]	2,860 [72.64]
-222-	44	2,100 [53.34]	2,400 [60.96]	2,560 [65.02]	2,800 [71.12]	2,960 [75.18]
-223-	46	2,200 [55.88]	2,500 [63.50]	2,660 [67.56]	2,900 [73.66]	3,060 [77.72]
-224-	48	2,300 [58.42]	2,600 [66.04]	2,760 [70.10]	3,000 [76.20]	3,160 [80.26]
-225-	50	2,400 [60.96]	2,700 [68.58]	2,860 [72.64]	3,100 [78.74]	3,260 [82.80]
-226-	52	2,500 [63.50]	2,800 [71.12]	2,960 [75.18]	3,200 [81.28]	3,360 [85.34]
-227-	54	2,600 [66.04]	2,900 [73.66]	3,060 [77.72]	3,300 [83.82]	3,460 [87.88]
-228-	56	2,700 [68.58]	3,000 [76.20]	3,160 [80.26]	3,400 [86.36]	3,560 [90.42]
-229-	58	2,800 [71.12]	3,100 [78.74]	3,260 [82.80]	3,500 [88.90]	3,660 [92.96]
-230-	60	2,900 [73.66]	3,200 [81.28]	3,360 [85.34]	3,600 [91.44]	3,760 [95.50]
-231-	62	3,000 [76.20]	3,300 [83.82]	3,460 [87.88]	3,700 [93.98]	3,860 [98.04]
910X-X5-232-01	64	3,100 [78.74]	3,400 [86.36]	3,560 [90.42]	3,800 [96.52]	3,960 [100.68]



North and South America:
Methode Electronics, Inc. Connector Products
 1700 Hicks Road • Rolling Meadows, IL 60008 USA
 847-392-3500 • Toll Free: 800-323-6864 • Fax: 847-392-9404
 Email: info@methode.com • Web: www.methode.com/connector/index.html

Europe:
Methode Electronics Ireland, Ltd.
 Unit H, Crossagalla Business Park, Ballysion Rd. • Limerick, Ireland
 +353 (0) 61 401222 • Fax: +353 (0) 61 401942
 Email: info@methode.ie • Web: ireland.methode.com/main.html

Far East:
Methode Electronics Far East, Pte. Ltd.
 1 Tuas Lane, Jurong Town • Singapore 638610
 65-68615444 • Fax: 65-68614777
 Email: sales@methode.com.sg • Web: www.methode.com/mefe/index.html