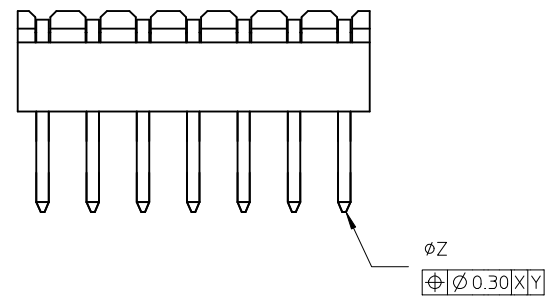
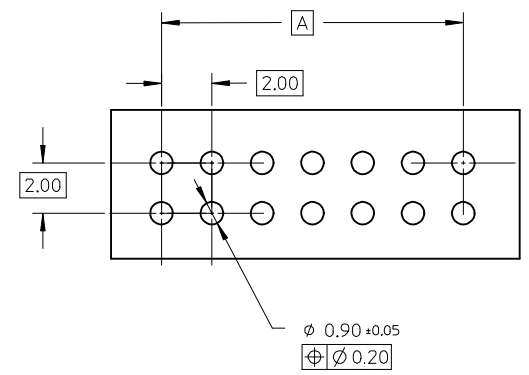
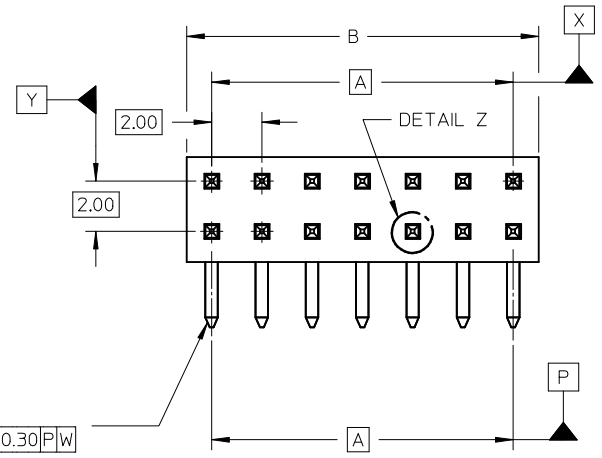
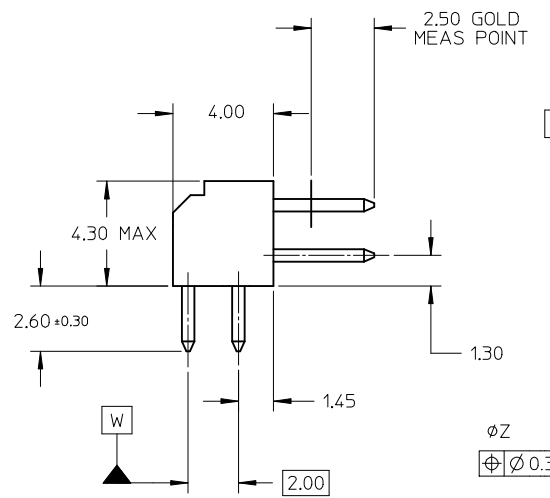


DETAIL Z



NOTES:

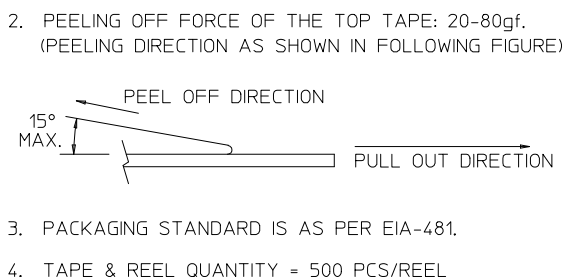
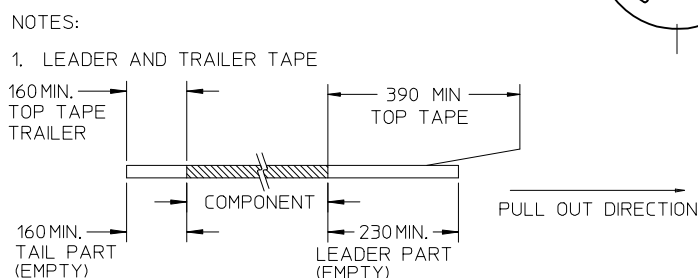
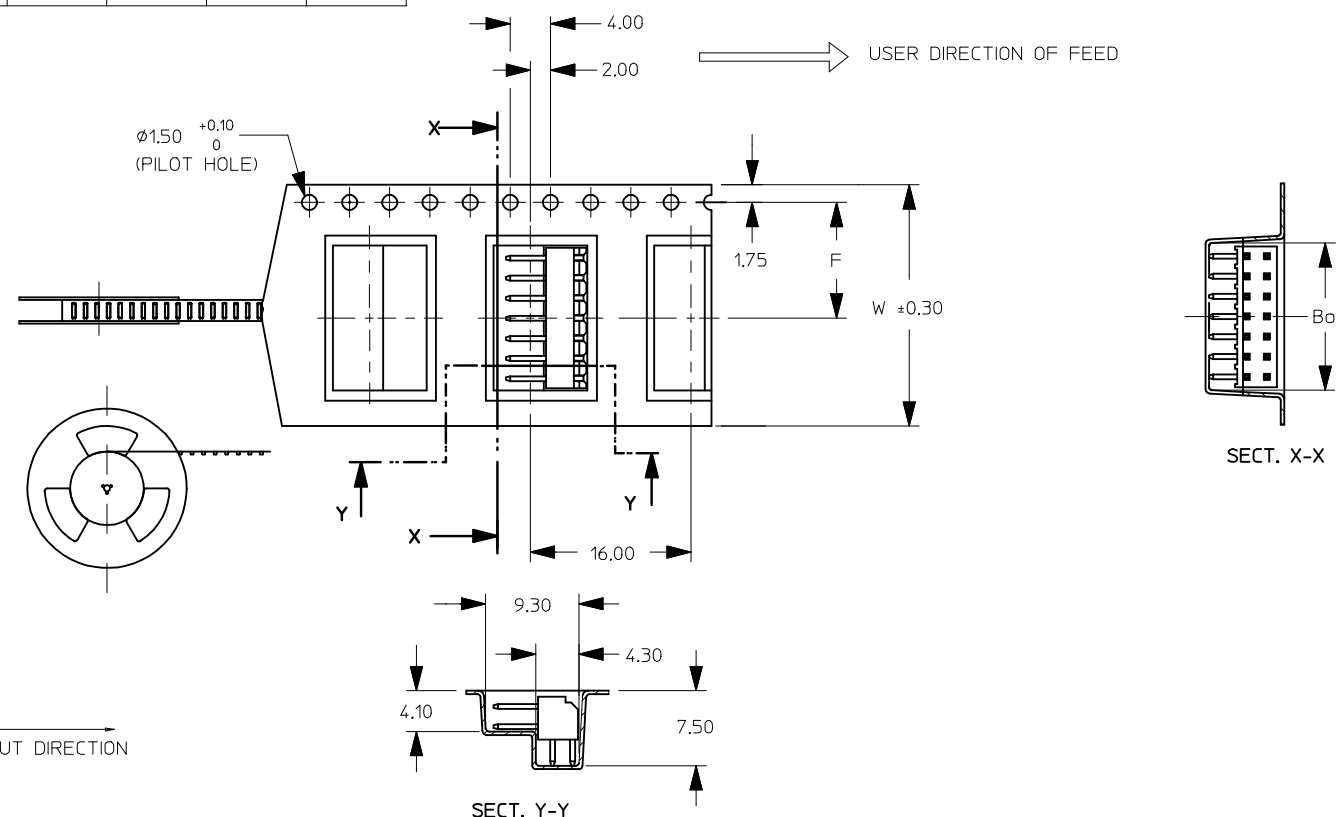
1. MATERIAL:
HSG: PCT, GLASS FILLED, UL 94V-0,
COLOUR BLACK.
PIN: 0,50MM SQ PHOSPHOR BRONZE 510
2. PLATING:
0,38µm MIN GOLD IN CONTACT AREA,
TIN IN SOLDER TAIL AREA, BOTH OVER
NICKEL OVERALL
3. 14 CKT USED FOR ILLUSTRATION ONLY
4. PART TO BE PACKED IN TAPE & REEL (SEE SHT 2).
5. PRODUCT SPEC PS-87761-100 APPLIES.
6. RECOMMENDED PCB BOARD THK 1.60±0.10 MM.



RECOMMENDED PCB LAYOUT

SEE SHEET 2 IEC NO: S2017-0676 DRWNG: GEMARLY 2017/06/07 CH'KD: SCHEONG 2017/08/22 APPR: KHLIM 2017/08/22	QUALITY SYMBOLS	GENERAL TOLERANCES (UNLESS SPECIFIED)		DIMENSION STYLE MM ONLY		SCALE NAT	DESIGN UNITS METRIC	THIRD ANGLE PROJECTION
	▽ _F = 0	4 PLACES	mm	INCH	DRAWN BY KSEE	DATE 2003/10/17	SALES DRAWING MGRID, 2MM DUAL ROW HDR. IN TAPE & REEL, R/A molex DOCUMENT NO. SD-87760-147 SHEET NO. 1 OF 2	
	▽ _E = 0	3 PLACES	± ---	± ---	CHECKED BY KCLING	DATE 2003/12/02		
	▽ _D = 0	2 PLACES	± 0.2	± ---	APPROVED BY SKTOH	DATE 2003/12/11		
▽ _C = 0	1 PLACE	± ---	± ---	MATERIAL NO.	DATE			
		0 PLACE	±	±	SEE TABLE			
		ANGULAR ± 1 °		DRAFT WHERE APPLICABLE MUST REMAIN WITHIN DIMENSIONS		THIS DRAWING CONTAINS INFORMATION THAT IS PROPRIETARY TO MOLEX INCORPORATED AND SHOULD NOT BE USED WITHOUT WRITTEN PERMISSION		

10	9	8	7	6	5	4	3	2	1
PART NUMBER (IN TAPE/REEL)	PART NUMBER (IN TRAY)	CKT SIZE	A	B	Bo	F	So	W	
87760-8010	87760-1416	14	12.00	14.00	14.40	11.50	-	24.00	
87760-8112	87760-1216	12	10.00	12.00	12.40	11.50	-	24.00	
87760-8015	87760-2216	22	20.00	22.00	22.35	20.20	-	44.00	
87760-8016	87760-0616	06	4.00	6.00	6.10	7.50	-	16.00	



ADD 87760-8016 IEC NO: S2017-0676 DRWG: GEMARLY 2017/06/07 CHK'D: SCHEONG 2017/08/22 APPR: KHLIM 2017/08/22	QUALITY SYMBOLS	GENERAL TOLERANCES (UNLESS SPECIFIED)		DIMENSION STYLE MM ONLY		SCALE NTS	DESIGN UNITS METRIC	THIRD ANGLE PROJECTION	
	$F_A=0$	4 PLACES	mm	INCH	DRAWN BY	DATE	TITLE		
	$F_B=0$	3 PLACES	± ---	± ---	KSEE	2003/10/17	SALES DRAWING		
	$F_C=0$	2 PLACES	± 0.2	± ---	CHECKED BY	DATE	MGRID, 2MM DUAL ROW HDR. IN TAPE & REEL, R/A		
		1 PLACE	± ---	± ---	KCLING	2003/12/02	molex DOCUMENT NO. SD-87760-147 SHEET NO. 2 OF 2		
		0 PLACE	±	±	APPROVED BY	DATE			
			ANGULAR ± 1 °		SKTOH	2003/12/11			
			DRAFT WHERE APPLICABLE MUST REMAIN WITHIN DIMENSIONS		MATERIAL NO. SEE TABLE				
					SIZE A3	THIS DRAWING CONTAINS INFORMATION THAT IS PROPRIETARY TO MOLEX INCORPORATED AND SHOULD NOT BE USED WITHOUT WRITTEN PERMISSION			