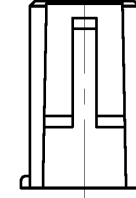
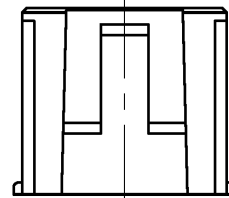
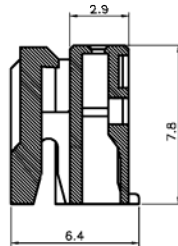
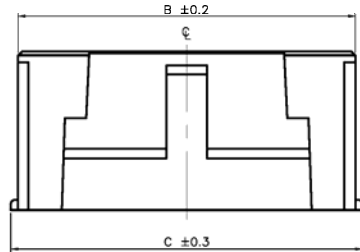
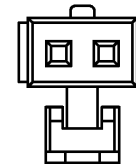
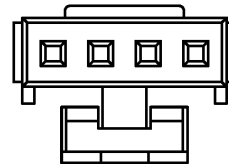
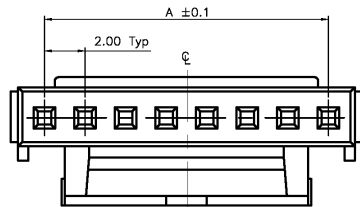


**SPECIFICATIONS**

Voltage Rating: 250V AC/DC  
 Current Rating: 3A AC/DC  
 Contact Resistance: 30mΩ max  
 Insulation Material: Nylon66 UL94V-0  
 Insulation Resistance: 1000MΩ min  
 Withstanding: 1000V AC/minute  
 Temperature Range: -25°C to +85°C



6~16 Circuit

3~5 Circuit

2 Circuit

Dimensions			
Poles	A	B	C
2	2.00	4.60	5.60
3	4.00	6.60	7.60
4	6.00	8.60	9.60
5	8.00	10.60	11.60
6	10.00	12.60	13.60
7	12.00	14.60	15.60
8	14.00	16.60	17.60
9	16.00	18.60	19.60
10	18.00	20.60	21.60
11	20.00	22.60	23.60
12	22.00	24.60	25.60
13	24.00	26.60	27.60
14	26.00	28.60	29.60
15	28.00	30.60	31.60
16	30.00	32.60	33.60

RoHS compliant

Rev.	Description	Date	Approved	Drawing	Name	Date
				Approved	Howard	04/30/08
				Checked	Lizzy	04/30/08
				Drawn	Tina	04/30/08
				0.0 ± 0.35	0.00 ± 0.20	Angles ± 3°
				UNIT: mm		

**Central Components Manufacturing**  
 440 Lincoln Blvd., Middlesex, New Jersey 08846  
 Phone 732 469-5720 888 288-5152 Fax 732 469-1919

Part No.: **JS-2003-XX**

Description: 2.00 Crimp Style Housing Connector