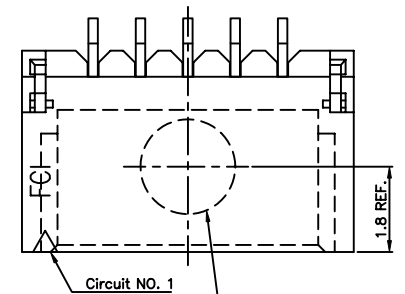
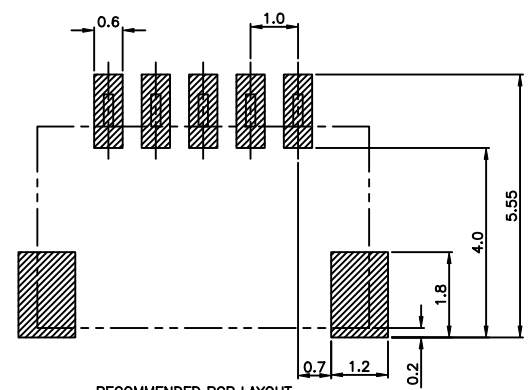


Tous droits strictement réservés. Reproduction ou communication a des tiers interdite sous quelque forme que ce soit sans autorisation écrite du propriétaire. Propriété de c FCI. Droits de reproduction FCI.

All rights strictly reserved. Reproduction or issue to third parties in any form whatever is not permitted without written authority from the proprietor. Property of FCI. Copyright FCI.



$\varnothing 2.0$ RESERVED AREA
 FOR PICK & PLACE NOZZLE

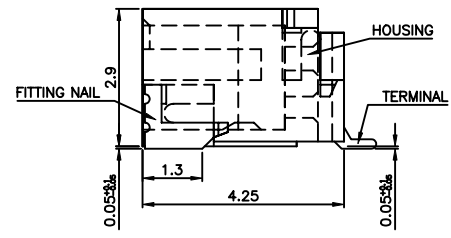
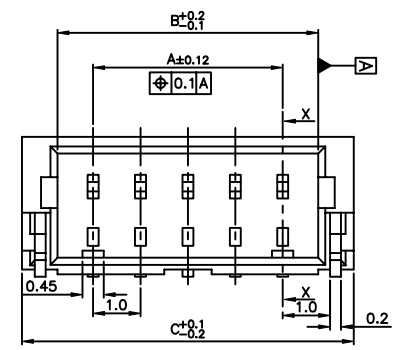
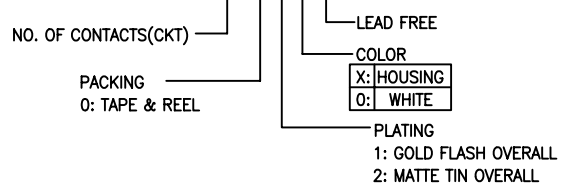


RECOMMENDED PCB LAYOUT
 GENERAL TOLERANCE ± 0.05

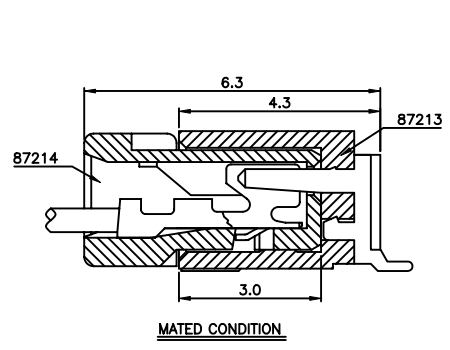
NOTES:

1. MATERIAL:
 - 1.1 HOUSING: THERMOPLASTIC, HIGH TEMP., UL94V-0.
 - 1.2 CONTACT: COPPER ALLOY
 - 1.3 FITTING NAIL: COPPER ALLOY
2. FINISH:
 - XXX010LF:
CONTACT AREA AND SOLDER TAIL: GOLD FLASH OVER 50u" MIN. NICKEL UNDER PLATED OVERALL.
FITTING NAIL: GOLD FLASH OVER 50u" MIN. NICKEL UNDER PLATED OVERALL.
 - XXX020LF:
CONTACT AREA AND SOLDER TAIL: 100u" MIN. MATTE TIN OVER 50u" MIN. NICKEL UNDER PLATED OVERALL.
FITTING NAIL: 100u" MATTE TIN OVER 50u" MIN. NICKEL UNDER PLATED OVER ALL.
3. REFLOW SOLDER CAPABLE TO 260°C PEAK TEMP. FOR 10 SECONDS MAX.
4. SPEC. PLS. REFER TO GS-12-572.
5. PACKAGE PLS. REFER TO GS-14-887.
6. PART NUMBER DESCRIPTION

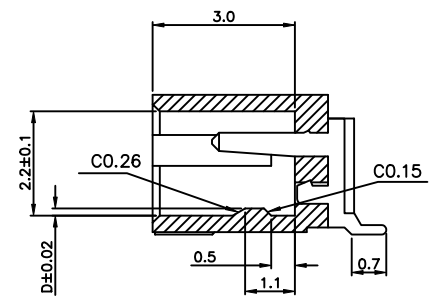
10094904-XXX X X X LF



CKT	DIM.A	DIM.B	DIM.C	DIM.D
005	4.0	5.4	7.0	0.15
007	6.0	7.4	9.0	0.15
012	11.0	12.4	14.0	0.15



MATED CONDITION



SECTION X-X

mat'l. code				tolerances unless otherwise specified		CUSTOMER COPY		FCI		
ltr	ecn no	dr	date	linear	.X ± 0.25	projection	www.fciconnect.com			
A	T09-1041	WL	03/31/09		.XX ± 0.15		title 1.0mm WTB CONN. SMT R/A S/R TYPE			
B	T09-1046	WL	04/07/09		.XXX ± 0.10					
C	T09-1089	WL	06/22/09	angles	0° ± 2°		product family		code	
D	T09-1101	WL	07/17/09	dr	WENDY CHEN 12/11/08		size	dwg no		TWN
E	T10-0005	WL	01/15/10	enrg	WENDY CHEN 12/11/08	scale	A4		10094904	sheet
				chr	WENDY CHEN 12/11/08				1 of 1	
				appd	GARY HSIEH 12/11/08					
sheet index	revision sheet	E	1							