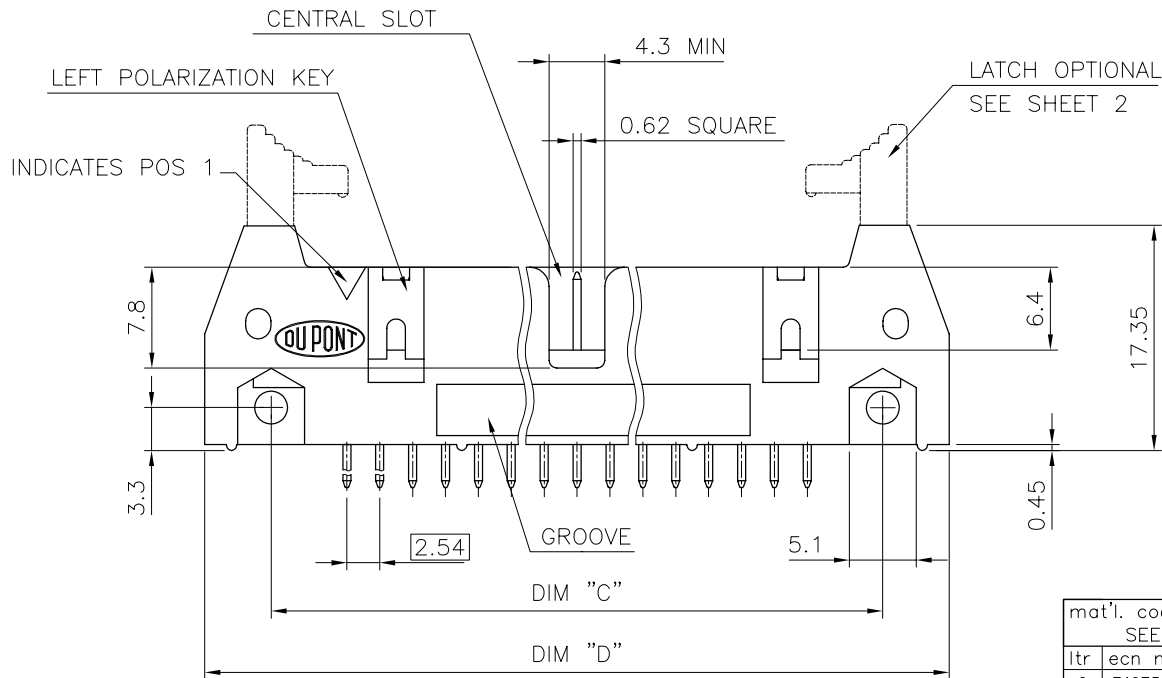
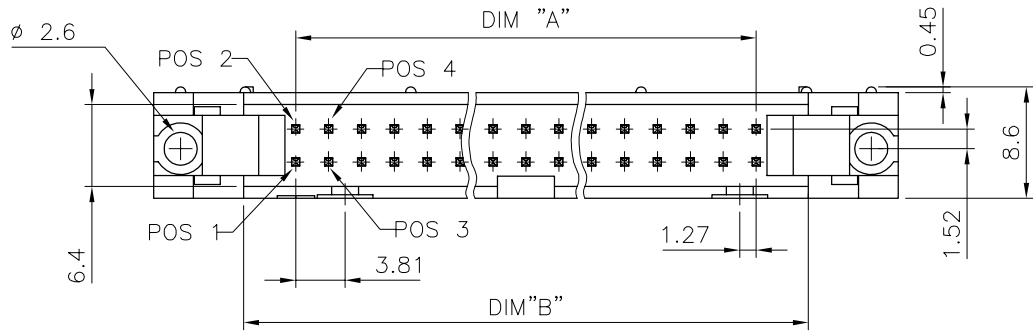


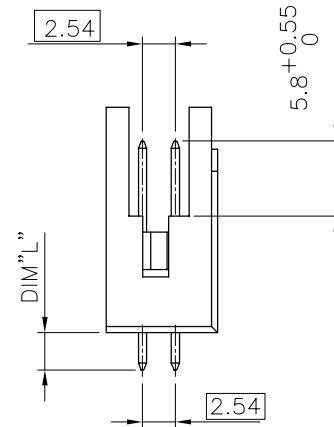
PRODUCT NUMBER	DIM "A"	DIM "C"	DIM "D"
71914-XY	SEE TABLE SHEET 213 2/2		



0.4um Au	3.81um SnPb MIN
CONTACT AREA	SOLDER TAIL AREA
PLATING THICKNESS OVER 1.27um Ni MIN	

NOTES.

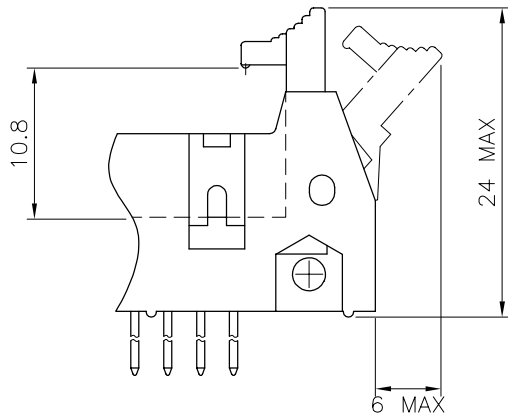
- 1 - MATERIAL CONTACT: PHOSPHOR BRONZE.
- 2 - MATERIAL PLASTIC: POLYESTER 30% GLASSFILLED FLAME RETARDANT PER UL-94-V0 COLOR GREY.
- 3 - PRODUCTS PACKED IN ANTISTATIC POLYBAG.
- 4 - PART NUMBER FOLLOWED BY A "Y", IF PACKAGING IN TUBES IS REQUIRED (EXAMPLE 71914-020Y).



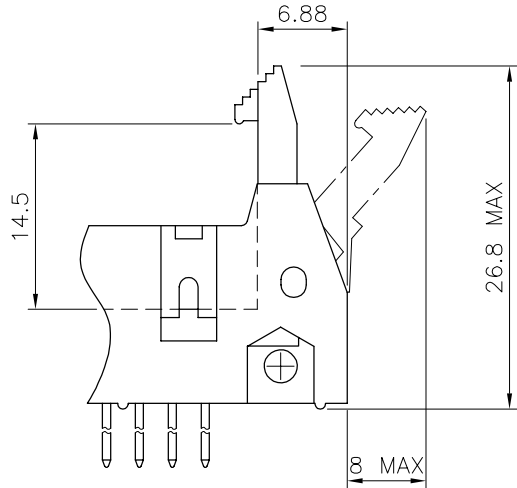
mat'l. code SEE NOTES		tolerances unless otherwise specified		CUSTOMER COPY	 ELECTRONICS www.fciconnect.com
ltr	ecn no dr date	linear		projection	
C	F40730 JMC 94.09.26	angles		 mm	title QKIE HEADER STRAIGHT 0.4um Au product family QKIE sizedwg no 213
D	F20333 LMU 02.05.27	dr	P.NIZZI 94.09.26	scale 2.5:1 A3	code 213 sheet 1 of 2
E	F20338 LMU 02.05.30	eng	JM PHAMVAN 94.09.26		
		chr	P.NIZZI 94.09.26		
		app	JM.P 94.09.26		
sheet index	revision sheet	E	D		
	1 2				

Tous droits strictement réservés. Reproduction ou communication
 de ces données sans autorisation écrite de
 FCI Electronics S. A.
 Copyright FCI Electronics S. A.
 Droits de reproduction FCI Electronics S. A.

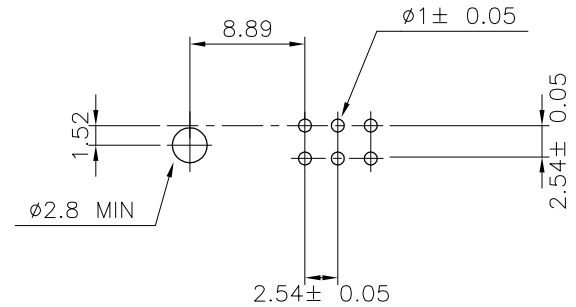
PRODUCT NUMBER	SIZE	DIM "A"	DIM "C"	DIM "D"	CENTRAL SLOT	LEFT POL KEY	GROOVE	MISSING PIN
71914-X06	2x3	5.08	22.86	26.92	NO	NO	NO	
71914-X08	2x4	7.62	25.4	29.46	NO	NO	NO	
71914-X10	2x5	10.16	27.94	32	YES	NO	NO	
71914-X14	2x7	15.24	33.02	37.08	YES	NO	NO	
71914-X16	2x8	17.78	35.56	39.62	YES	YES	YES	
71914-X18	2x9	20.32	38.1	42.16	YES	YES	NO	
71914-X20	2x10	22.86	40.64	44.7	YES	YES	YES	
71914-X26	2x13	30.48	48.26	52.32	YES	YES	YES	
71914-X30	2x15	35.56	53.34	57.4	YES	YES	NO	
71914-X34	2x17	40.64	58.42	62.48	YES	YES	NO	
71914-X40	2x20	48.26	66.04	70.1	YES	YES	YES	
71914-X40PC	2x20	48.26	66.04	70.1	YES	YES	YES	40
71914-X44	2x22	53.34	71.12	75.18	YES	YES	YES	
71914-X50	2x25	60.96	78.74	82.8	YES	YES	YES	
71914-X60	2x30	73.66	91.44	95.5	YES	YES	YES	
71914-X64	2x32	78.74	96.52	100.58	YES	YES	YES	



LOW PROFILE LATCH



STANDARD LATCH



RECOMMENDED HOLE PATTERN

71914-2YY			●
71914-1YY		●	
71914-0YY	●		
PRODUCT CODE "X"	WITHOUT LATCH	STANDARD LATCH	LOW PROFILE LATCH
	EJECTOR LATCH OPTION		

mat'l. code		tolerances unless otherwise specified		CUSTOMER COPY		 ELECTRONICS www.fciconnect.com	
ltr	ecn no	dr	date	linear	projection	title	
B	BSC0012	PCL	90.01.08			QKIE HEADER	
C	F40730	JMC	94.09.26	angles		STRAIGHT 0.4µm Au	
D	F20333	LMU	02.05.27			product family QKIE	
				dr J.COMPAGNON	87.08.05	 mm scale 2.5:1	code
				eng JM PHAMVAN	94.09.26		code
				chr J.COMPAGNON	94.09.26	size	213
				appd JM.P	94.09.26	dwg no	2 of 2
sheet index	revision sheet					A3	71914