

REVISION AF

DO NOT SCALE FROM THIS PRINT

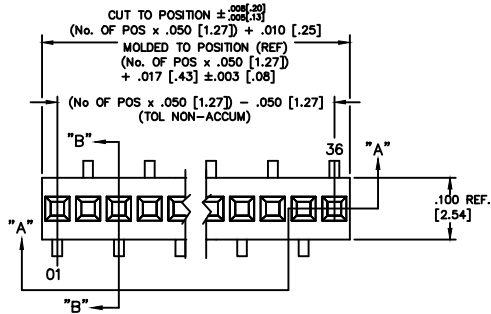
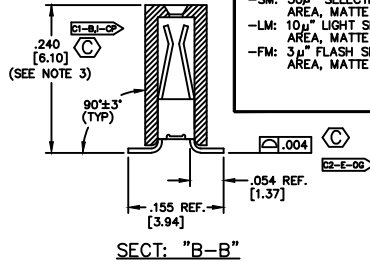
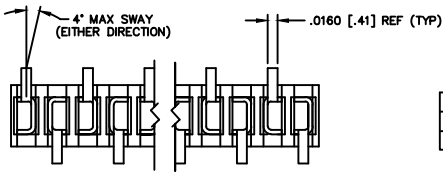
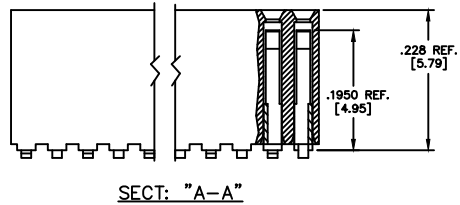
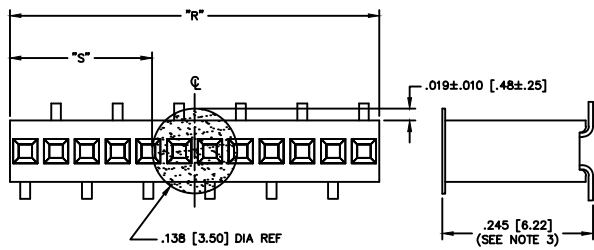


FIG. 1



CRITICAL DIMENSION INSPECTION TABLE	
ASSEMBLY OPERATION	IN-PROCESS INSPECTION
BREAK CARRIER	C1



"R" = USE MEASURED DIMENSION (REF)
 "S" = {("R" - .138 [3.50]) / 2} ±.020 [.51]

FIG. 3

-K: POLYAMIDE FILM PAD
 AVAILABLE ON POS 7 - 36 ONLY

PROPRIETARY NOTE
 THIS PRODUCT AND DESIGN ARE THE PROPERTY OF SAMTEC CORPORATION. ALL RIGHTS ARE RESERVED. NO PART OF THIS DOCUMENT IS TO BE REPRODUCED OR TRANSMITTED IN ANY FORM OR BY ANY MEANS, ELECTRONIC OR MECHANICAL, INCLUDING PHOTOCOPYING, RECORDING, OR BY ANY INFORMATION STORAGE AND RETRIEVAL SYSTEM, WITHOUT THE WRITTEN CONSENT OF SAMTEC INC.

DIMENSIONS ARE IN INCHES UNLESS OTHERWISE NOTED		TOLERANCES ARE:	ANGLES	TITLE:	DWG NO:
ONE PLACE DECIMALS: ±.1	TWO PLACE DECIMALS: ±.01	THREE PLACE DECIMALS: ±.005	±5°	RECEPTACLE SURFACE MOUNT (SINGLE ROW)	RSM-1XX-XX-XXX-S-X
		FOUR PLACE DECIMALS: ±.0020			SHEET 1 OF 1

RSM-1XX-XX-XXX-S-X

BODY LENGTH SPECIFICATION
 -02 THRU -36 POSITIONS (SEE NOTE 2)

LEAD STYLE
 -02: C-64-02-X

PLATING SPECIFICATIONS
 -S: 30µ" SELECTIVE GOLD IN CONTACT AREA, MATTE TIN ON TAIL
 -F: 3µ" FLASH SELECTIVE GOLD IN CONTACT AREA, MATTE TIN ON TAIL
 -L: 10µ" LIGHT SELECTIVE GOLD IN CONTACT IN CONTACT AREA, MATTE TIN ON TAIL
 -T: MATTE TIN CONTACT AND TAIL
 -STL: 30µ" SELECTIVE GOLD IN CONTACT CONTACT AREA, TIN/LEAD (90/10+/-5%) TAIL
 -TM: MATTE TIN CONTACT AND TAIL
 -SM: 30µ" SELECTIVE GOLD IN CONTACT AREA, MATTE TIN ON TAIL
 -LM: 10µ" LIGHT SELECTIVE GOLD IN CONTACT AREA, MATTE TIN ON TAIL
 -FM: 3µ" FLASH SELECTIVE GOLD IN CONTACT AREA, MATTE TIN ON TAIL

OPTIONS
 -P: PICK AND PLACE PAD (USE PPP-20)(SEE FIG. 2) (AVAILABLE ON POS. 6 THRU 36 ONLY)
 -K: POLYAMIDE FILM PAD (AVAILABLE ON POS. 7 THRU 36 ONLY) (.005 [.13] THICKNESS WITH SILICONE ADHESIVE)(SEE FIG 3)
 -TR: TAPE AND REEL

BODY SPECIFICATION
 -S: SINGLE ROW (USE RSM-XX-S)

NOTES:
 1. PIN ONE TO BE IN DIRECTION OF ARROW ON TUBE.
 2. FOR ODD POSITIONS, LOSE ONE PIN PER CUT FOR EVEN POSITIONS, LOSE TWO PINS PER CUT.
 3. MEASURED AT BEND RADIUS.
 4. MINIMUM RETENTION: 1.0 LB.
 5. CUT FLASH TO BE .010" MAX WITH NO FLASH.
 6. ALLOW IN HOLES OR EXTENDING BELOW LEADS.
 7. CONTACTS NOT TO BE INTERLEAVED.
 8. (C) REPRESENTS A CRITICAL DIMENSION.
 9. INSULATOR MATERIAL: BLACK, LCP, UL 94 VO

OPTION	TUBE	PLUG
-P	PT-1-24-01-14	TP-03
-	PT-1-24-03-64	TP-24
-K	PT-1-24-03-64	TP-24

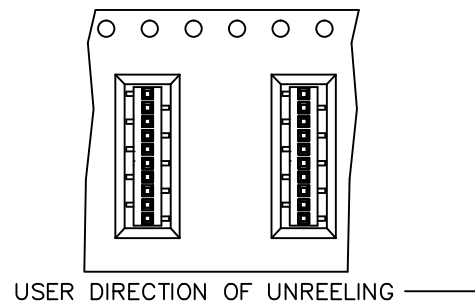
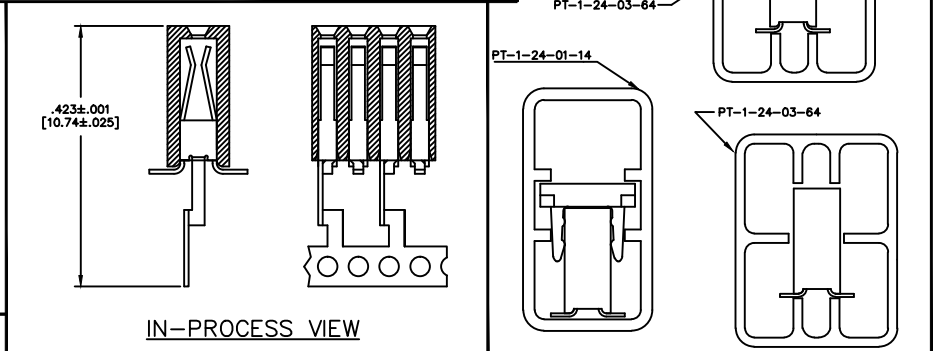


FIG. 4
 -TR: TAPE AND REEL

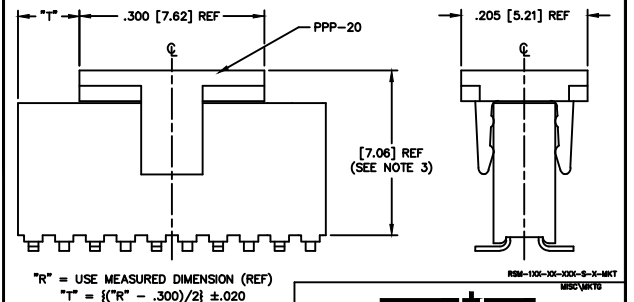


FIG. 2
 -P: PICK AND PLACE PAD
 AVAILABLE ON POS 6 - 36 ONLY

samtec
 520 PARK EAST BLVD. NEW ALBANY, INDIANA 47150
 PHONE (812) 944-8733 P.O. BOX 1147
 CODE 55322
 MADE BY: QED REINER 11-24-92
 APPROVED: [Signature]
 RSM-1XX-XX-XXX-S-X
 SHEET 1 OF 1