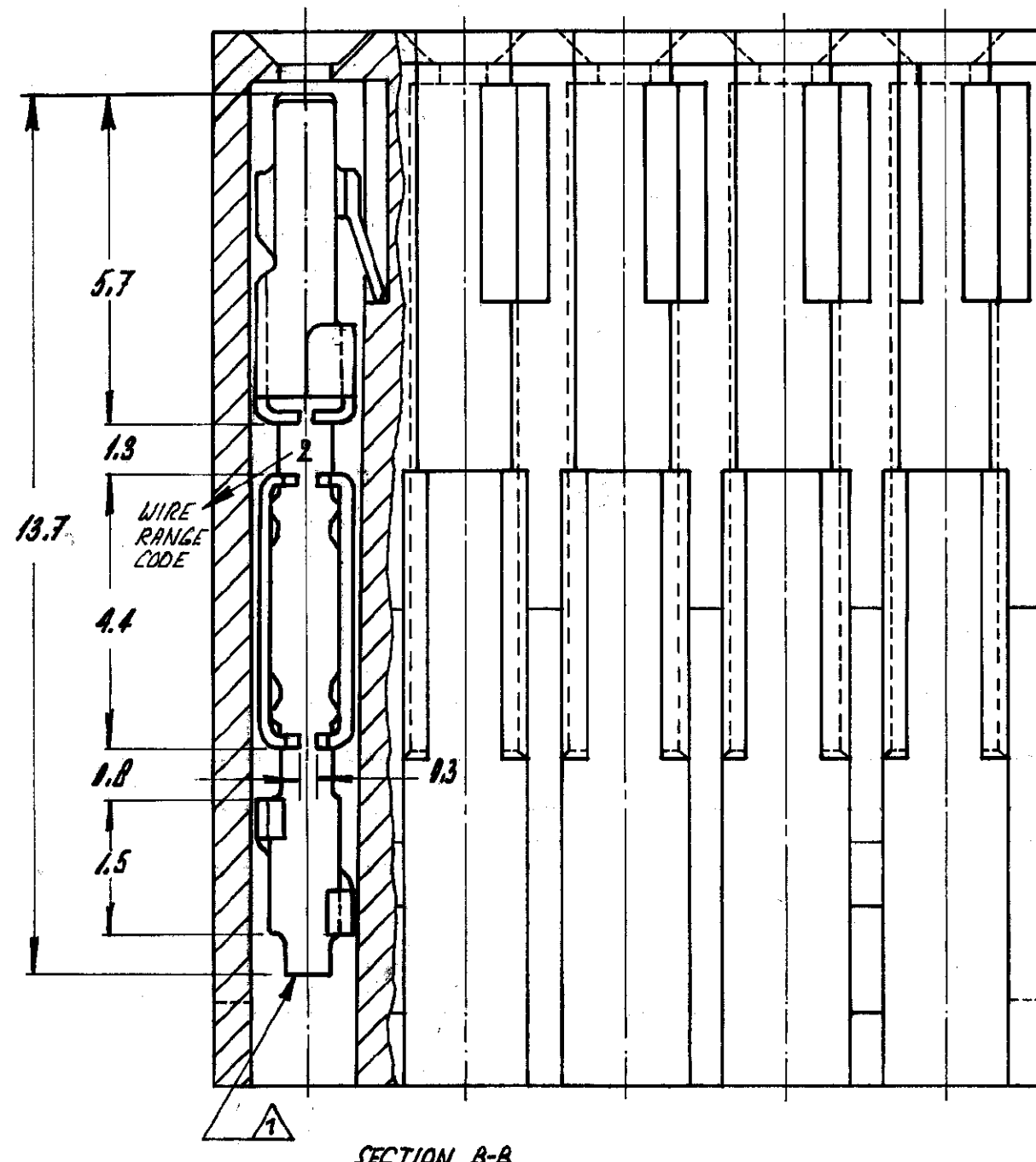
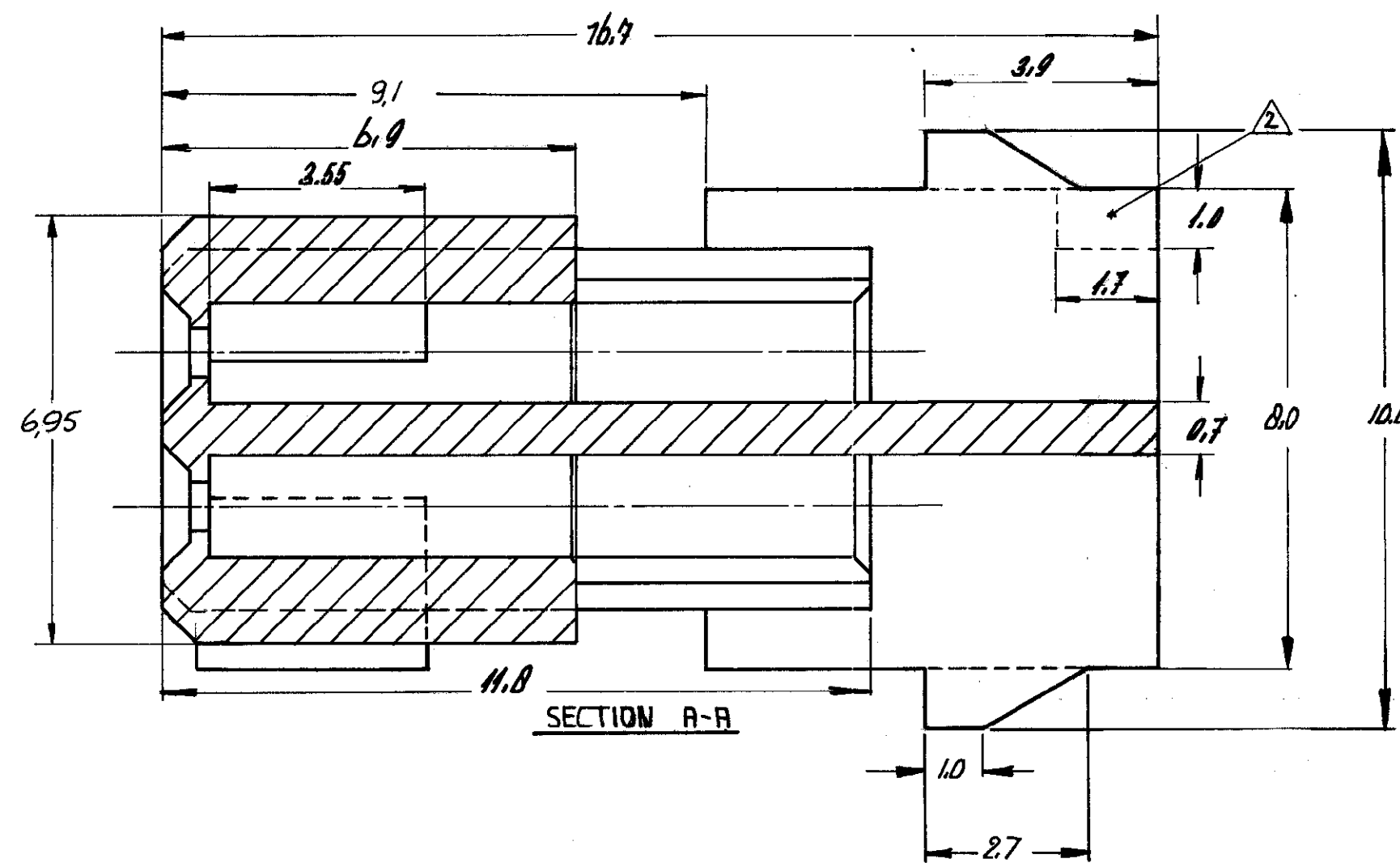
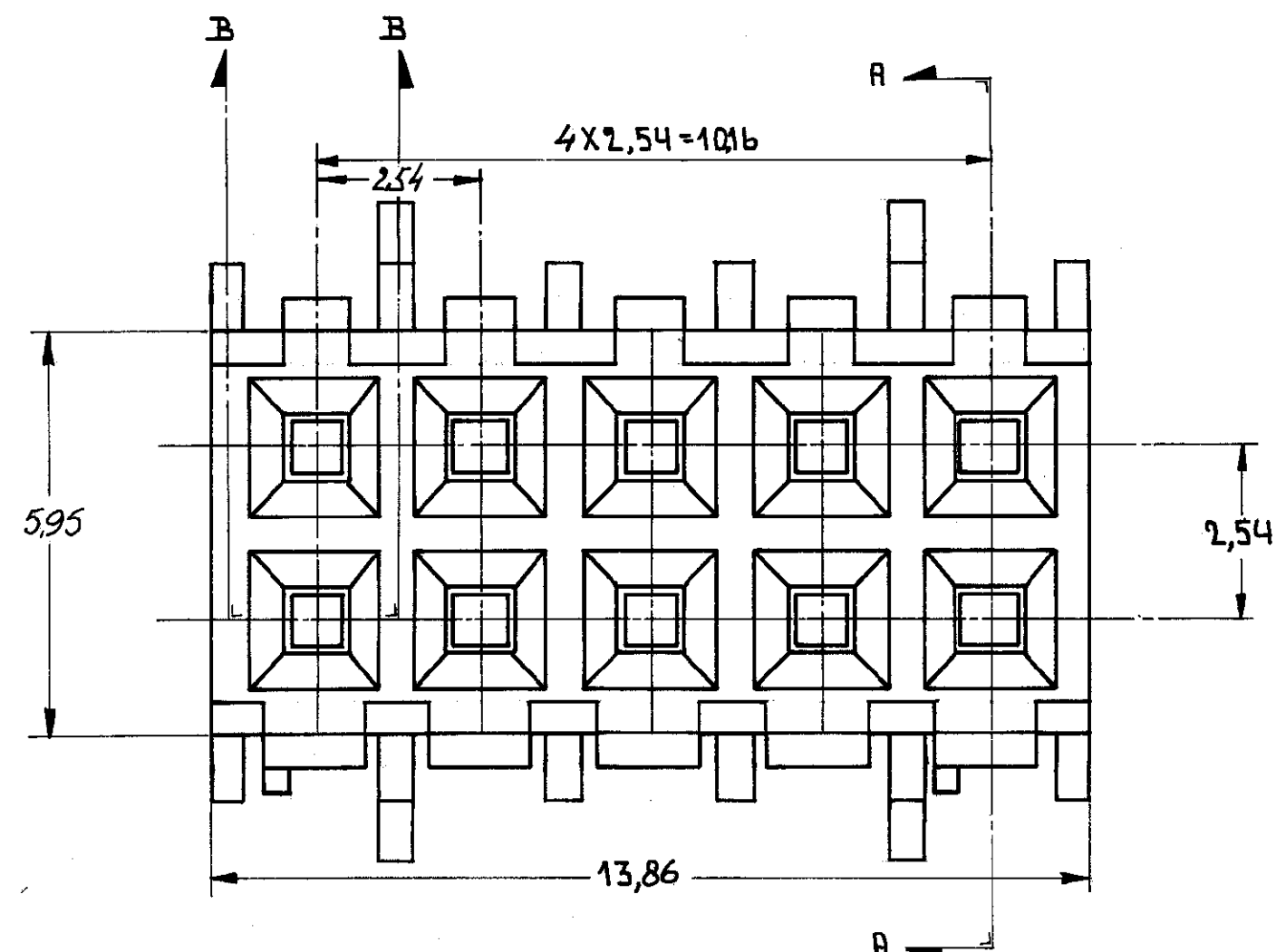


USED ON



- NOTES:
- 1 ALL CAVITIES LOADED WITH CONTACTS, ONE CONTACT SHOWN ONLY.
 - 2 TWO POLARISING-OPENINGS FOR COVER, ONLY IN OUTER WALLS AT SIDE OF NARROW RIBS ONLY.
 - 3 CONNECTOR MARKED WITH DATE-CODE.
 - 4 CONNECTOR PRINTED WITH DATE CODE, WIRE SIZE AND SOLDERING THICKNESS.
 - 5 PLATING SAME AS -1, ONLY 1.3 μm Au OVER 1.25 μm Ni.
 - 6 PLATING SAME AS -1, ONLY 1.0 μm Au OVER 1.25 μm Ni.

2-166502-6	1	SAME AS -6
2-166502-5	1	SAME AS -5
166502-6		SEE NOTE 1
166502-5		SEE NOTE 2
166502-4		SAME AS -1, ONLY 1.25 μm Au
166502-3	3	SAME AS -1, ONLY 2.0 μm Au
166502-2		
166502-1		
ORDER NO.		MATERIAL
		PLATING

CONTACT AREA: 0.8 μm Au OVER 0.8 μm Ni.
TERMINATION AREA: SNIP OVER 0.8 μm Ni.

HOUSING: THERMO PLASTIC POLYESTER
COLOUR: GREY

CONTACTS: PHOSPHOR BRONZE

CUSTOMER COPY FOR REFERENCE ONLY

DR L. VAN DER HEYDEN DATE 20.8.80
CHK [Signature] DATE 19/8.80
DE DATE
APP [Signature] DATE 20.8.80

© 1980 BY AMP-HOLLAND N.V. ALL RIGHTS RESERVED A-MP PRODUCTS COVERED BY PATENTS AND/OR PATENTS PENDING.

WIRE-RANGE INSUL-RANGE FIRST USED SYSTEM XII
SCALE 4D:1 SIZE NO C-166502
NAME 2x5 POS. M.T. CABLE CONNECTOR AWG 26-22

AMP-HOLLAND N.V. 's-Hertogenbosch

This information is confidential and is disclosed to you on condition that no further disclosure is made by you to other than AMP personnel without written authorization from AMP-HOLLAND N.V. DIMENSIONS IN INCHES - DIMENSIONS THUS () IN M.M. - DO NOT SCALE PRINT

PRINT DIST

[Home](#)[Part Number Search](#)[Text Search](#)[Alternate Part Search](#)[Multiple Part Comparison](#)[Alphabetical Search](#)[Brand Search](#)[Industry Product Search](#)[Product Type Search](#)[Product Family Search](#)[Competitor Cross Reference](#)[Document Number Search](#)[Lead Free Solutions](#)[Help/Glossary](#)**Current Brand View**

AMP

[View All Tyco Electronics Brands](#)

Click to activate links to all other products

AMPMODU**MTE, MT, Level V IDC, Tandem Spring Products****.100 Centerline IDC (MTE, MT, RV 100/RV100-4)**

AMP

166502-1 -- 6 of 7 products

(Tyco Electronics P/N: 166502-1)[Previous](#)[Next](#)[Sales Information](#)[AMP ACES](#)[Step Search Screen](#)[Related Documents](#)[General Information](#)[Pricing](#)[Product Availability](#)**Please use the customer drawing for all design activity.****Customer Drawing: 166502, Rev. M**Document Title: 2x5 position mass termination cable connector
awg 26-22[165086.pdf](#) [165086.pdf](#) (77K)**Searchable Features:**

Brand:	AMP
Product Type:	Connector Assembly
No. of Positions:	10
No. of Rows:	Dual
Terminate To:	Wire
Centerline Spacing (mm [in]):	2.54 x 2.54 [.100 x .100]
Mating Polarization:	No

Other Properties:

Wire Termination Type:	IDC
Housing Material:	Thermoplastic Polyester
Housing Flammability Rating:	UL 94V-0
Rows Loaded:	Fully Loaded

Wire Range (mm [AWG]):	0.15-0.32 [26-22]
Contact Type:	MT (IDC)
Contact Mating Area Plating:	Gold (30) over Nickel (50)
Contact Material:	Copper Tin
Color:	Gray

[Copyright](#) and [Privacy Statement](#)

Visit [Tyco International, Ltd.](#)

[Products](#) | [Brands](#) | [Industries](#) | [Customer Service](#) | [About](#) | [Home](#)