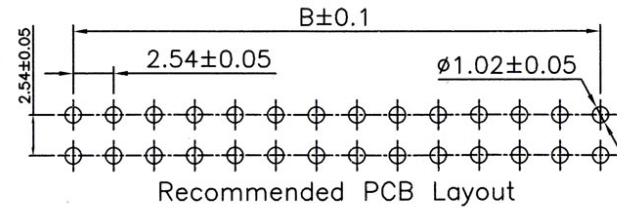
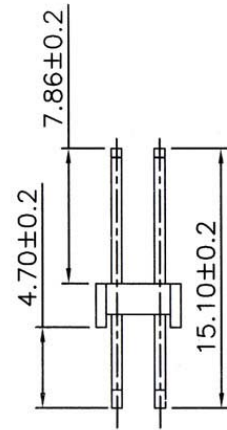
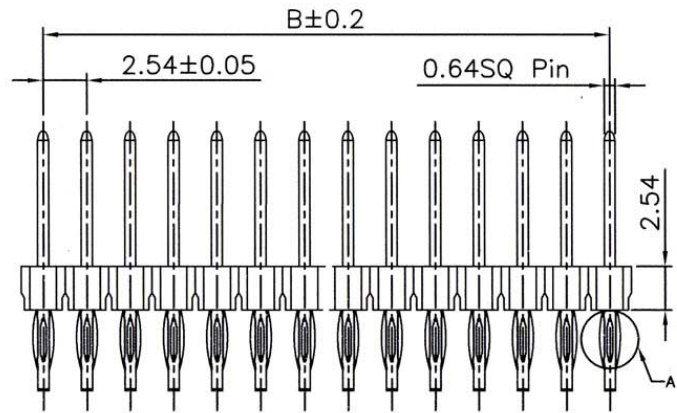


SPECIFICATIONS

Voltage Rating: 250V AC/DC
 Current Rating: 3.0 Amp
 Contact Material: Brass
 Contact Resistance: 20m Ohm Max
 Insulator Material: Nylon 6T UL94V-0, Black
 Insulation Resistance: 5000M ohm min.
 Withstanding: 500V AC/Minute
 Operating Temp: -40°C ~ +105°C

B=2.54 X (POS/2 -1)



Series	Rows	Positions	Dimensions	Plating	Tail	Package
APH	2	XX	SDP1	XX	PF	XX
2.54mm Pin Header	2=2 Rows	02-80	Mating Length 7.86mm Overall Length 15.1mm	TN=Tin SGXX=Selective Gold GDXX=Gold XX=Flash if blank,3,5,10,15,20,30u"	PF=Press Fit Tail 4.70mm	TB=Tube BG=Bag

RoHS compliant

Rev.	Description	Date	Approved	Drawing	Name	Date
				Approved	Howard	11/06/09
				Checked	Lizzy	11/06/09
				Drawn	Tina	11/06/09
				0.0 ± 0.35	0.00 ± 0.20	Angles ± 3'
				UNIT: mm		

Central Components Manufacturing
 440 Lincoln Blvd., Middlesex, New Jersey 08846
 Phone 732 469-5720 888 288-5152 Fax 732 469-1919

Part No.: **APH-2-XX-SDP1-XX-PF-XX**

Description: 2.54mm Pitch Pin Header Double Rows Straight Type