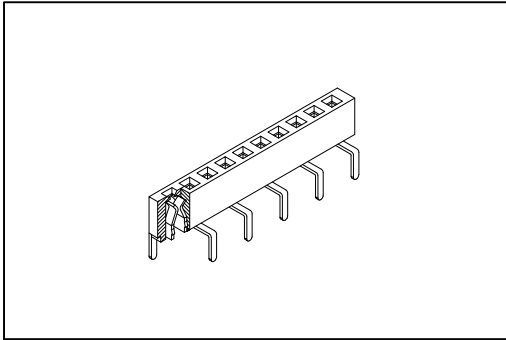


2048 Series

P.C.B. Socket 2.54mm(0.100")



Material:

Housing: Thermoplastic Polyester Glass Filled UL94V-0.

Contacts: Copper Alloy.

Electrical Characteristics:

Current Rating: 2 A.

Dielectric Withstanding Voltage: AC 1000V.

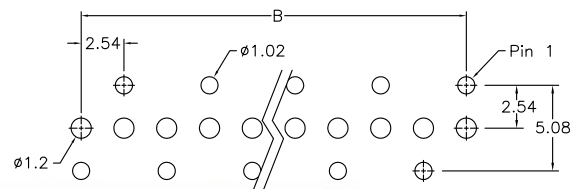
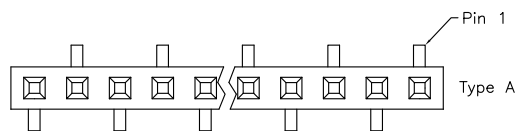
Insulator Resistance: 1000MΩ min.

Contact Resistance: 20mΩ max.

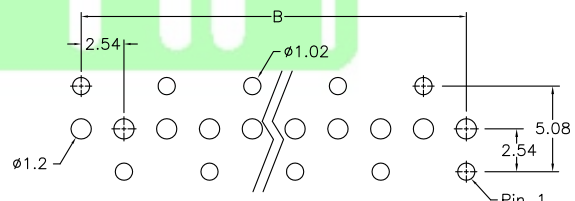
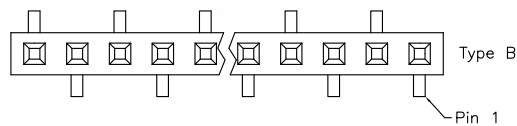
Operating Temperature: -55°C~+105°C.

Features:

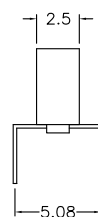
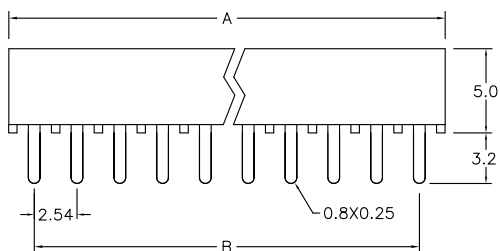
- * Bottom entry, Pass through or Top entry.
 - * Low profile 5.0mm (0.197").
 - * Single row vertical mount.
 - * Two choices of foot print.
 - * Additional plating options available.
- Mates with: 2011,2012,2015.



P.C. Board Layout



P.C. Board Layout



Position Dimension	2 Thru 40
A	2.54 X No. of Positions
B	2.54 X No. of Positions -2.54

Ordering information

2048- 1 X 40 G 00 A U
 Series Single Row No.of Pin Per Row G: Gold Plated 00: G/F A: Type A U: Tube Package
 B: Type B