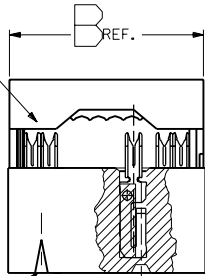
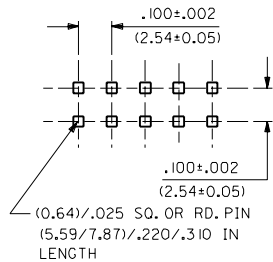
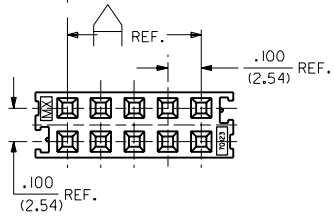


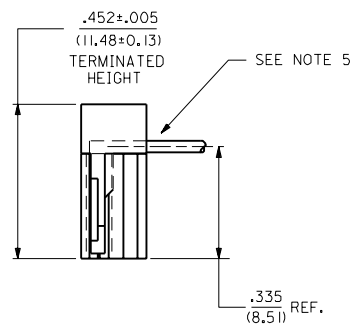
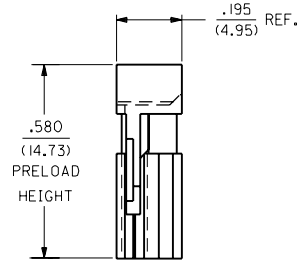
UPPER HOUSING  
CABLE STOP  
(SEE NOTE 5)



CIRCUIT #1  
IDENTIFIER



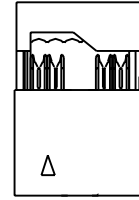
RECOMMENDED P.C.B. PIN-OUT



**NOTES**

1. 10 CKT. SIZE SHOWN FOR ILLUSTRATION PURPOSES.
2. FOR USE WITH AWG #26 AND #28 STRANDED WIRE .045/(1.14) MAX. DIAMETER INSULATION RIBBON CABLE WITH .050/(1.27)  $\phi$ .
3. MATERIALS:  
HOUSING, UPPER AND LOWER-POLYESTER, G.F., 94V-0, COLOR-BLACK  
TERMINAL-.010/(0.25) THICK BERYLLIUM COPPER ALLOY 165, 1/4H.M.  
PLATING: SEE SHEET 2
4. PRODUCT SPECIFICATION PS-70121 APPLIES.
5. LEFT-HAND CABLE STOP: UPPER HOUSING CABLE STOP LOCATED ON SAME SIDE AS 1st CKT. IDENTIFIER.

DIMENSIONS		CKT. SIZE
B	A	
(9.91)	(5.08)	6
.390	.200	
(12.45)	(7.62)	8
.490	.300	
(14.99)	(10.16)	10
.590	.400	
(17.53)	(12.70)	12
.690	.500	
(20.07)	(15.24)	14
.790	.600	
(22.61)	(17.78)	16
.890	.700	
(27.69)	(22.86)	20
1.090	.900	
(32.77)	(27.94)	24
1.290	1.100	
(35.31)	(30.48)	26
1.390	1.200	
(40.39)	(35.56)	30
1.590	1.400	
(45.47)	(40.64)	34
1.790	1.600	
(48.01)	(43.18)	36
1.890	1.700	
(53.09)	(48.26)	40
2.090	1.900	
(65.79)	(60.96)	50
2.590	2.400	
(78.49)	(73.66)	60
3.090	2.900	
(83.57)	(78.74)	64
3.290	3.100	



**6 CIRCUIT ONLY**  
FOR REFERENCE ONLY

2	D	I	REVISIONS
MFG.	SH.	REV.	LTR.

D	REMOVED TAPE PACK PER UDT2000-02/4 J.LONG 9/10/88
C	CHANGED MATERIAL PER ECR # U512/4 95/06/06 CAC
B1	ADDED EDP'S PER U40009 94/01/04 RB
B	REVISED PER U30209 93/02/10 RB
A1	ADDED 12 CIRCUIT PER U10987 91/05/23 RB
A	ADDED EDP NO'S. PER ERO #26678 06/10/88 DB/JAS
	X-RELEASE PER ERO #26080 3/10/88 RB/PB

**UNLESS OTHERWISE SPECIFIED TOLERANCES: ANGULAR ± 1/2°**

	INCH	METRIC
3 PLACE	± .010	---
2 PLACE	± .014	± 0.25
1 PLACE	---	± 0.35

DRAFT WHERE APPLICABLE MUST REMAIN WITHIN DIMENSIONS

DRWG. BY: DJB CHKD. BY: DJB  
APP'D. BY: SCALE: 4 : 1

FILE NAME: S101219X1.DWG

**MOLEX INCORPORATED** L15LEJLL 60532 U.S.A.

PART NO. **SEE CHART** DRWG. NO. **SDA-70121-9-000**

SHEET NO. 1 OF 2 DATE 02/17/88

THIS DRAWING CONTAINS INFORMATION THAT IS PROPRIETARY TO MOLEX INC. AND SHOULD NOT BE USED WITHOUT WRITTEN PERMISSION.

70121

70121

