

TABLE1.DIMENSIONS

PART No.	A±0.2	B	D±0.3	G±0.1
LPC-B26()M2LG()	24	32.15	36.3	24
LPC-B30()M2LG()	28	36.15	40.3	28
LPC-B36()M2LG()	34	42.15	46.3	34
LPC-B50()M2LG()	38	46.15	50.3	38
LPC-B44()M2LG()	42	50.15	54.3	42
LPC-B50()M2LG()	48	56.15	60.3	48

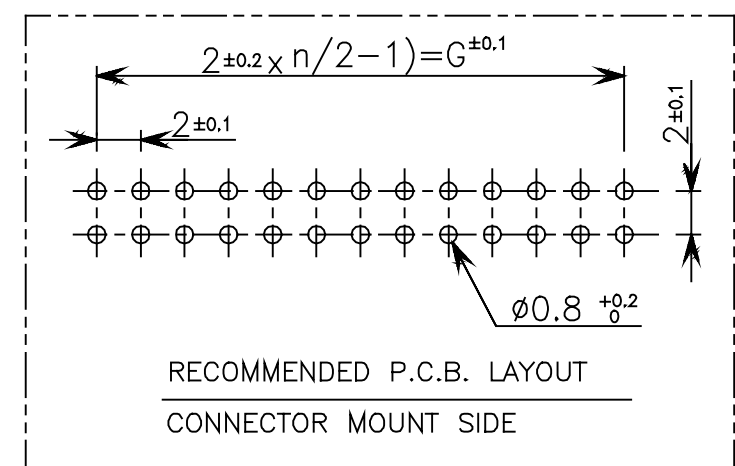
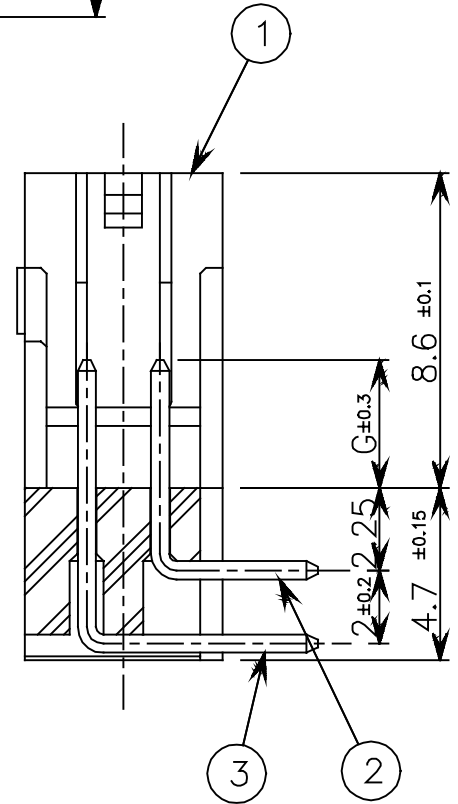
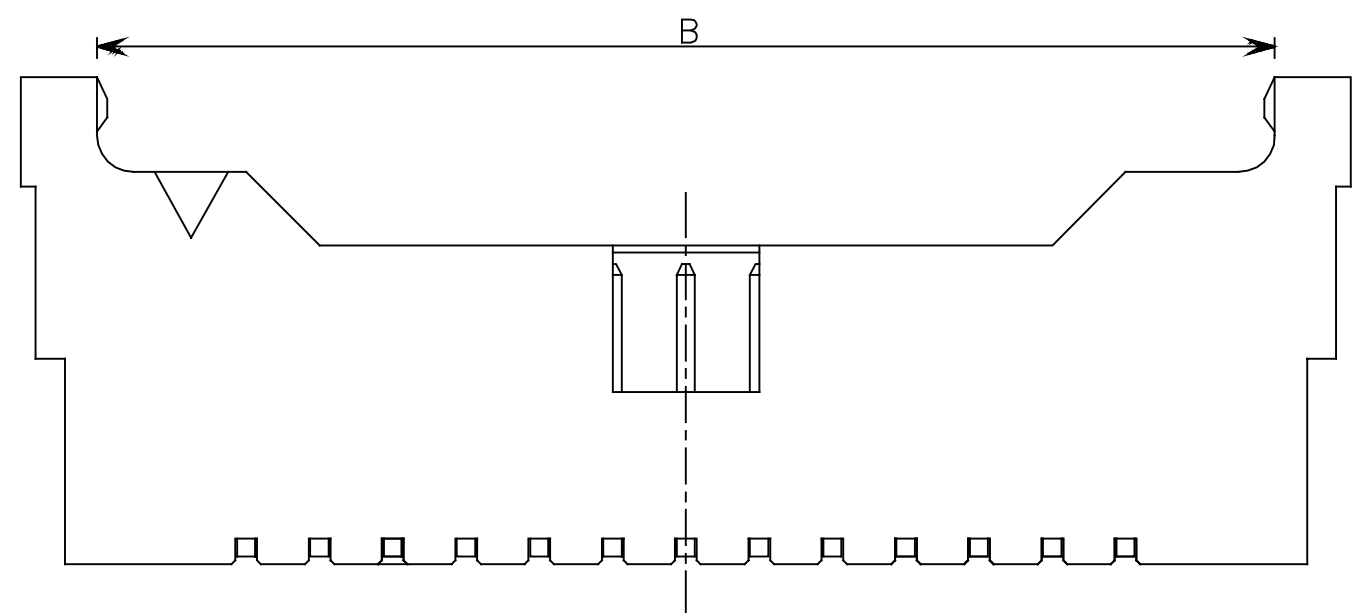


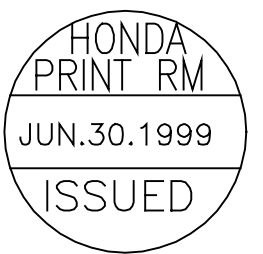
TABLE2.DIMENSIONS

PART No.	E±0.3	F
LPC-B(n)M2LG()	3.5	2.6
LPC-B(n)TM2LG()	3.5	2

1. As for the dimension, see TABLE1,2.
2. "n" Shows number of contacts.
3. Applicable Connector: LPC-B(n)FAG(), RFAG()

TABLE3.PLATING

PART No.	FINISH
LPC-B(n)(T)M2LG	Au PLATING 0.2μm
LPC-B(n)(T)M2LG2	Au PLATING 0.05μm
LPC-B(n)(T)M2LG3	Au PLATING 0.76μm



3	CONTACT(LONG)	PHOSPHOR BRONZE	n/2	SEE TABLE3	---					
2	CONTACT(SHORT)	PHOSPHOR BRONZE	n/2	SEE TABLE3	---					
1	INSULATOR	PBT	1	---	UL94V-0 BLACK					
LTR.	DATE	BY	REV.	DESCRIPT	NO.	PART NAME	MATERIAL	QTY	FINISH	NOTE
	03.07(1999)					HONDA TSUSHIN KOGYO., LTD.				
	DR	DE	CHK	CHK	APP.	NAME	MALE CONNECTOR (RIGHT ANGLE DIP TYPE)			
						PART NO.	LPC-B(n)(T)M2LG()			