

## FEATURES AND SPECIFICATIONS

### Features and Benefits

- Polarized to mating connector
- Staggered footprint prevents solder bridging
- Standard kinked PC tails for retention to PC board
- Available in standard white or 4 optional colors

### Reference Information

Product Specification: PS-42219  
 Packaging: Bulk  
 UL File No.: E29179  
 CSA File No.: LR19980  
 Mates With: 42219 connectors  
 Designed In: Millimeters

### Electrical

Voltage: 250V  
 Current: 3.0A  
 Contact Resistance: 20mΩ max.  
 Dielectric Withstanding Voltage: 1000V AC  
 Insulation Resistance: 1000 MΩ min.

### Mechanical

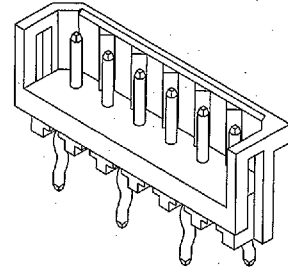
Mating Force: 1.8kg max.  
 Unmating Force: 0.15kg min.  
 Durability: 25 cycles

### Physical

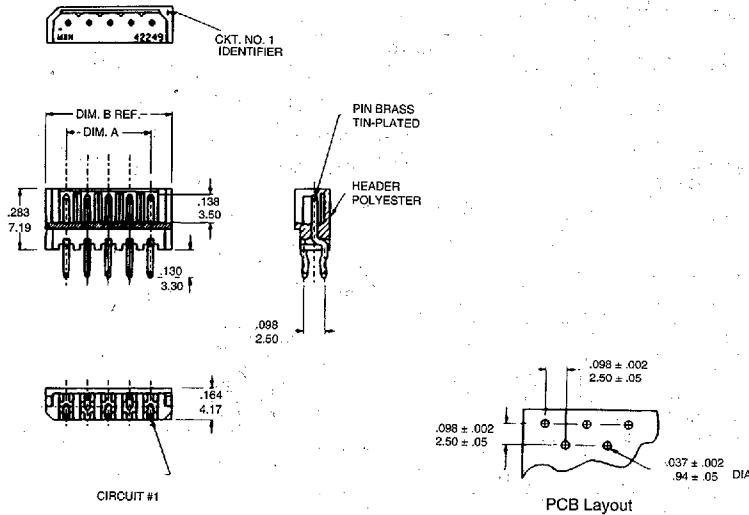
Housing: Polyester, UL 94V-0  
 Contact: Brass .027" diameter  
 Plating: Tin  
 Temperature: -40 to +105°C

# molex® 2.50mm (.098") Pitch SPOX™ Wire-to-Board Header

## 42249 Shrouded Staggered Footprint



PCB Connectors



## ORDERING INFORMATION AND DIMENSIONS

Circuits	Order No.					Dimension	
	Natural (White)	Red	Yellow	Orange	Green	A	B
2	• 22-43-6020	22-44-7022	22-44-7021	22-44-7024	22-44-7023	2.50 (.098)	7.40 (.291)
3	• 22-43-6030	22-44-7032	22-44-7031	22-44-7034	22-44-7033	5.00 (1.97)	9.90 (.390)
4	• 22-43-6040	22-44-7042	22-44-7041	22-44-7044	22-44-7043	7.50 (.295)	12.40 (.488)
5	• 22-43-6050	22-44-7052	22-44-7051	22-44-7054	22-44-7053	10.00 (.394)	14.90 (.587)
6	• 22-43-6060	22-44-7062	22-44-7061	22-44-7064	22-44-7063	12.50 (.492)	17.40 (.685)
7	• 22-43-6070	22-44-7072	22-44-7071	22-44-7074	22-44-7073	15.00 (.591)	19.90 (.783)
8	• 22-43-6080	22-44-7082	22-44-7081	22-44-7084	22-44-7083	17.50 (.689)	22.40 (.882)
9	• 22-43-6090	22-44-7092	22-44-7091	22-44-7094	22-44-7093	20.00 (.787)	24.90 (.980)
10	• 22-43-6100	22-44-7102	22-44-7101	22-44-7104	22-44-7103	22.50 (.886)	27.40 (1.079)
11	• 22-43-6110	22-44-7112	22-44-7111	22-44-7114	22-44-7113	25.00 (.984)	29.90 (1.177)
12	• 22-43-6120	22-44-7122	22-44-7121	22-44-7124	22-44-7123	27.50 (1.083)	32.40 (1.276)
13	• 22-43-6130	22-44-7132	22-44-7131	22-44-7134	22-44-7133	30.00 (1.181)	34.90 (1.374)
14	• 22-43-6140	22-44-7142	22-44-7141	22-44-7144	22-44-7143	32.50 (1.280)	37.40 (1.472)
15	• 22-43-6150	22-44-7152	22-44-7151	22-44-7154	22-44-7153	35.00 (1.378)	39.90 (1.571)

• US Standard Product, available through Molex franchised distributors