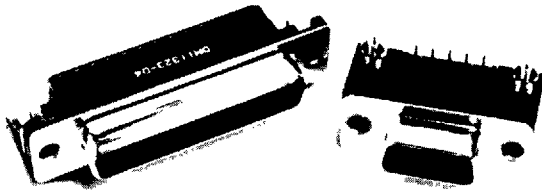


## DM Series

### P/N Description

# DM 1 1 3 2 3 - D4



### Connector Performance:

#### Electrical Characteristics

Contact Current Rating: 5 Amperes (Size 20 Contact)  
 Contact Resistance: 10 MΩ Max  
 Operation Temperature: -55°C to +105°C  
 Dielectric Withstanding Voltage:  
     Non-filtered contacts - 1000 VAC at Sea Level  
     Filtered Contacts: (Unless otherwise specified, tested  
         at 2 1/2 Maximum Operating  
         Voltage, w/50mA maximum  
         charging current.)  
 Insulation Resistance: 5000 MΩMin

#### Mechanical Characteristics

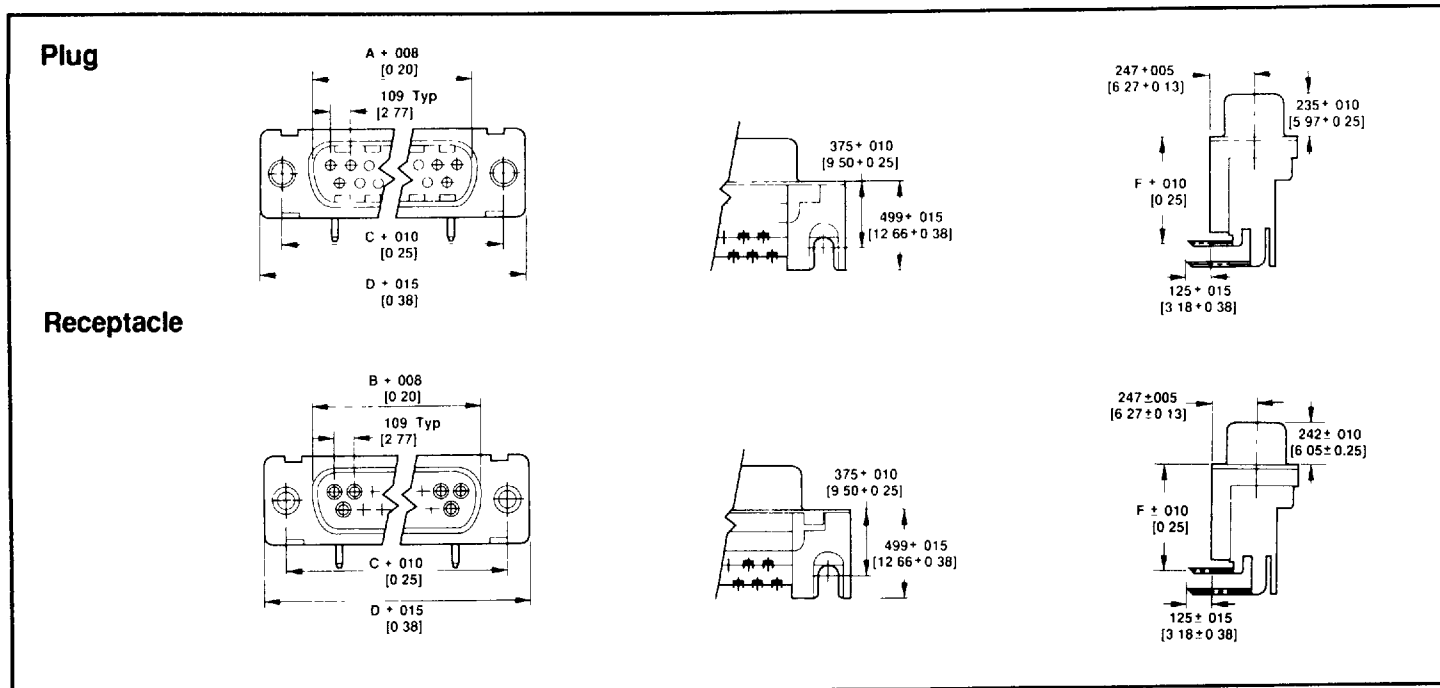
Contact Engagement Force: 12 Oz Max  
 Contact Separation Force: .75 Oz Min  
 Contact Retention: 9 Lbs Min  
 Insert Retention: 40 psi Min

#### Materials

Contact: Copper Alloy  
 Insulator:  
     Standard: PBT, Glass-filled, UL 94V-0  
     SMD: PPS, Glass-filled, UL 94V-0/5V  
 Shell: Steel

- 1 Series Prefix:**  
DM: Non-Filtered D-Sub
- 2 Termination Type**  
A: Right Angle PC Board Mounted
- 3 Contact Type**  
0: Plug  
1: Receptacle
- 4 No. of Contact Positions**  
0: 19 Positions  
1: 9 Positions  
2: 15 Positions  
3: 25 Positions
- 5 Body Length**  
2: .318"  
3: .590" Short Mount
- 6 Contact Finish**  
2: 20μ" Gold Plating  
3: 30μ" Gold Plating  
6: 10μ" Gold Plating
- 7 Mounting Options**  
D4: Board Lock  
D5: Board Lock with Female Screwlock  
L2: Clinch Nut  
L3: Clinch Nut with Female Screwlock  
For Other Options Please Consult Factory

## Solder Tail, Right Angle Posted, Body Length .318

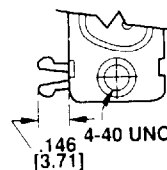


P/N	NO. OF CONTACT POSITIONS	CONTACT TYPE	DIMENSIONS inches (mm)					
			A	B	C	D	E	F
DM101 ***-***	9	Plug	0.663	0.642	0.984	1.221	0.614	0.318
DM111 ***-***		Receptacle	(16.84)	(16.31)	(24.99)	(31.01)	(15.60)	(8.08)
DM102 ***-***	15	Plug	0.991	0.970	1.312	1.539	0.941	0.318
DM112 ***-***		Receptacle	(25.17)	(24.64)	(33.32)	(39.40)	(23.90)	(8.08)
DM103 ***-***	25	Plug	1.531	1.510	1.852	2.089	1.488	0.318
DM113 ***-***		Receptacle	(38.89)	(38.36)	(47.04)	(53.11)	(37.77)	(8.08)

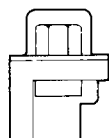
### Mounting Styles



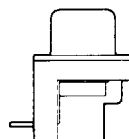
- L2: Clinch Nut



- D4: Board Lock



- L3: Clinch Nut with Female Screwlock



- D5: Board Lock with Female Screwlock