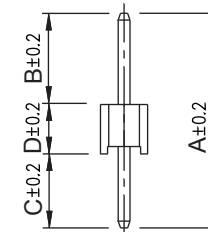
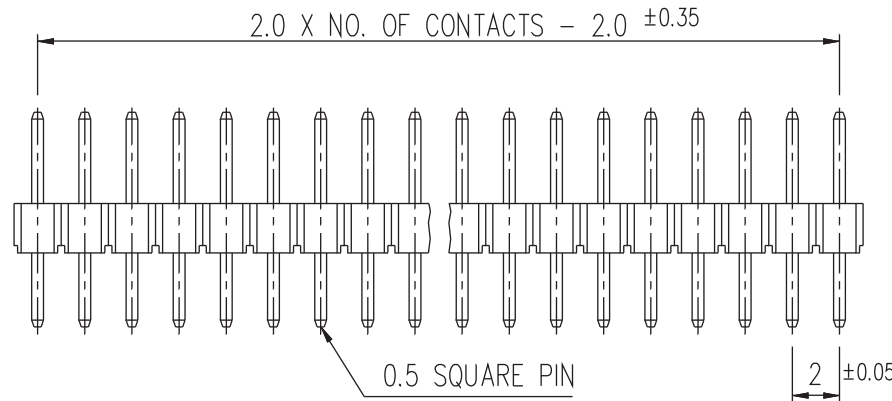


P.C.B LAYOUT



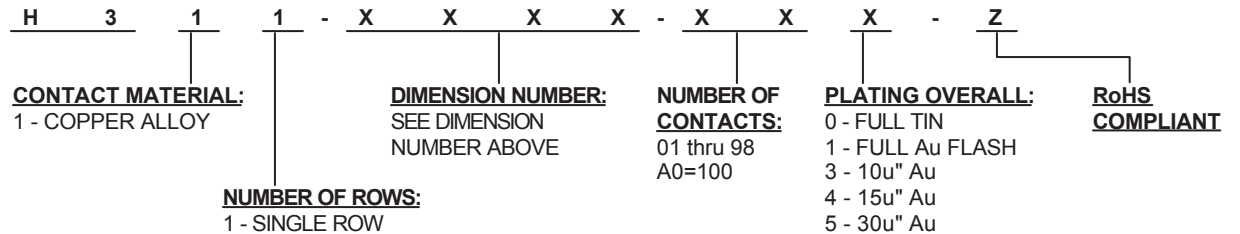
**DIMENSION(mm)**

DIMENSION NUMBER	A	B	C	D
0100	8.35	4.00	2.35	2.00
0101	8.85	4.00	2.85	2.00
0102	12.05	7.00	3.05	2.00
0103	7.85	4.00	2.35	1.50
0104	8.35	4.00	2.85	1.50
0105	11.55	7.00	3.05	1.50

\* OTHER DIMENSIONS AVAILABLE

**ELECTRICAL:**  
 CONTACT RESISTANCE: 20mΩ Max.  
 INSULATOR RESISTANCE: 5000MΩ Min.  
 CURRENT RATING: 1.5A  
 DIELECTRIC WITHSTANDING VOLTAGE: 1000V AC FOR 1 MIN.  
 OPERATING TEMPERATURE: -40° C TO +105° C

**MATERIAL:**  
 INSULATOR: GLASS FILLED POLYESTER, UL94V-0



Rev	Drawn	Checked	Approved	Date
0	A.M.	S.M.	S.M.	07/17/03
A	B.S.	S.M.	S.M.	1/31/07

**SMP TECHNOLOGY, INC.**

SCALE:n/a Pin Header, 2.00mm Pitch, Through Hole, Single Row, Straight