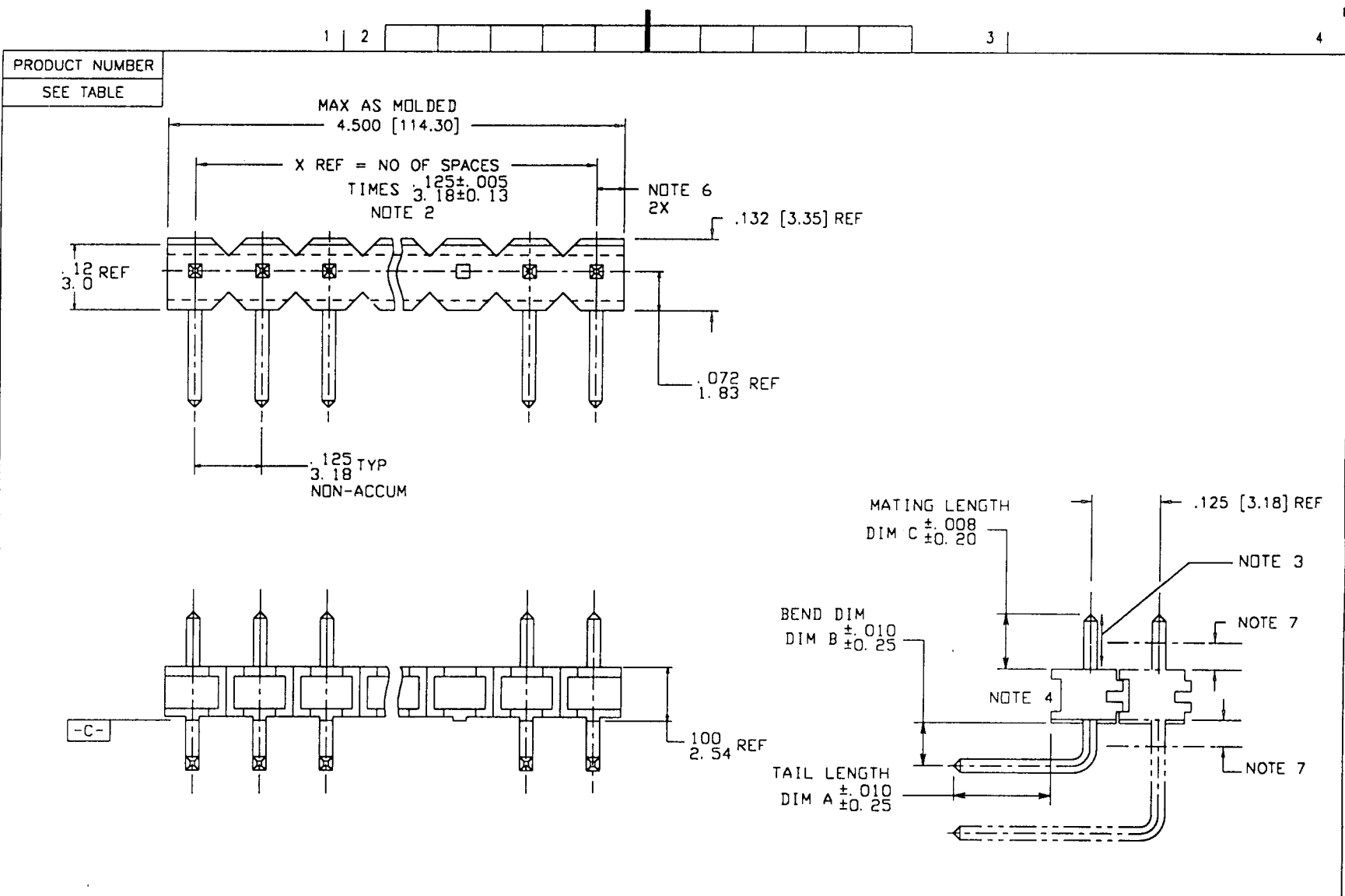


Tous droits strictement réservés. Reproduction ou communication o des tiers interdite sous quelque forme que ce soit sans autorisation écrite du propriétaire. Propriété de ©BERG ELECTRONICS. Droits de reproduction BERG ELECTRONICS INC.



All rights strictly reserved. Reproduction or issue to third parties in any form whatever is not permitted without written authority from the proprietor. Property of ©BERG ELECTRONICS Copyright BERG ELECTRONICS INC.



mat'l. code SEE TABULATION				tolerances unless otherwise specified		CUSTOMER COPY	BERG ELECTRONICS	
l/r	ecn no	dr	date	linear	$.XX \pm .01 / X \pm .3$		projection 	title BERGSTIK® I HEADER
L	REDRAWN	MSC	3/30/88	linear	$.XXX \pm .005 / XX \pm .13$	INCH/MM 		product family BERGSTIK
M	REVISED	JGS	6/10/89	angles	$.XXXX \pm .0020 / XXX \pm .051$		scale 4:1	size dwg no
N	REDIM	JWB	6/29/92		$0 \pm Z$	A		65580
P	V50358	MOF	7/9/95	dr	BK CHUA 15JUL.96		code	
R	S60163	S.LOW	15JUL.96	engr	JOYCE PEH 15JUL.96	sheet		
S	S60211	A. H	10/15/96	chr	JOYCE PEH 15JUL.96	1 of 3		
T	T00045	JSR	2/25/2K	appd	MK KAN 15JUL.96			
sheet	revision	T	R	R				
index	sheet	1	2	3				

form no. 7530-001-103

cage code
22526

Tous droits strictement reserves. Reproduction ou communication a des tiers interdite sous quelque forme que ce soit sans autorisation écrite du propriétaire. Propriete de ©BERG ELECTRONICS. Droits de reproduction BERG ELECTRONICS INC.



All rights strictly reserved. Reproduction or issue to third parties in any form whatever is not permitted without written authority from the proprietor. Property of ©BERG ELECTRONICS Copyright BERG ELECTRONICS INC.

PRODUCT NUMBER SEE TABLE	PLATING VARIATIONS		PLASTIC COLOR	TERMINAL MATERIAL
	DASH NO.	OVERPLATING		
XXXXX-1YY	30u"/0.76u Au	50u"/1.27u NI	BLACK	3/4 HD PHOS BRONZE
-2YY	15u"/0.38u Au	50u"/1.27u NI	CREAM	3/4 HD PHOS BRONZE
-3YY	50u"/1.27u Au	50u"/1.27u NI	NAT'L BROWN	3/4 HD PHOS BRONZE
-4YY	150u"/3.81u 93/7 SnPb		BLACK	3/4 HD PHOS BRONZE
-5YY	15u"/0.38u GXT	50u"/1.27u NI	DARK BLUE	3/4 HD PHOS BRONZE
-XXXXX-6YY	30u"/0.76u EXT	50u"/1.27u NI	LIGHT BLUE	3/4 HD PHOS BRONZE

OBSOLETE
OBSOLETE

PART NUMBER INFORMATION

XXXXX-YYY
 SEE SHEET 3 FOR PREFIX OF PART NO.
 NO OF POSITIONS SEE NOTE 5
 TERMINAL PLATING

EXAMPLE: 65580-408 DENOTES AN 8 POSITION PART WITH 150u"/3.81u TIN PLATED TERMINALS. THE OVERALL PLASTIC LENGTH MAY BE 1.050/26.67 MAX. (NOTE 2) THE PLASTIC COLOR IS BLACK.

NOTES

- ① PLASTIC MATERIAL: 20% MIN GLASS FILLED NYLON. RATED PER UL 94V-1.
- ② MEASURED AT DATUM -C- WITH PART IN RESTRAINED CONDITION.
- ③ 5 LBS. / 2.3 KG MINIMUM PIN PUSH-OUT FORCE IN EITHER DIRECTION.
- ④ BERG LOGO MAY APPEAR ON THIS SURFACE
- ⑤ MIN NO. OF POSITIONS - 1, MAX NO. OF POSITIONS - 36.
- ⑥ .060/1.52 MAX AS MOLDED (MOLDED AS 36 POSITIONS ONLY) .085/2.16 MAX WHEN BROKEN TO SPECIFIED LENGTHS.
- ⑦ .050/1.3 MAX FLASH AROUND PINS IN THIS AREA.
- ⑧ TWO SIDES OF LEAD-IN ON PINS NOT PLATED. TYPICAL BOTH ENDS.

mat'l. code		tolerances unless otherwise specified		CUSTOMER COPY		BERG ELECTRONICS	
lfr	ecn no	dr	date	linear	angles	projection	title
P				.XXX ±.005/XX ±.13	0 ±.2		BERGSTIK® I HEADER .125/3.18cc SR RIGHT ANGLE
R				.XXX ±.0020/XXX ±.051			
				dr	BK CHUA 15JUL.96	scale	product family
				enqr	JOYCE PEH 15JUL.96	1:1	size
				chr	JOYCE PEH 15JUL.96	A	65580
				appd	MK KAN 15JUL.96		sheet
sheet index	revision sheet						2 of

cage code 22526

All rights strictly reserved. Reproduction or issue to third parties in any form whatever is not permitted without written authority from the proprietor.
Property of ©BERG ELECTRONICS Copyright BERG ELECTRONICS INC.



Tous droits strictement réservés. Reproduction ou communication à des tiers interdite sous quelque forme que ce soit sans autorisation écrite du propriétaire.
Propriété de ©BERG ELECTRONICS. Droits de reproduction BERG ELECTRONICS INC.

PRODUCT NO.	TAIL LENGTH DIM A	BEND DIM DIM B	MATING LENGTH DIM C	AVAILABLE PLATING					
				-1XX	-2XX	-3XX	-4XX	-5XX	-6XX
65580-XY	.135/3.43	.060/1.52	.230/5.84	YES	YES	YES	YES	YES	NO
65581-XY	.170/4.32	.060/1.52	.230/5.84	YES	YES	YES	YES	NO	NO
65582-XY	NOT AVAILABLE								
65583-XY	.285/7.24	.060/1.52	.230/5.84	YES	YES	YES	YES	NO	NO
65584-XY	NOT AVAILABLE								
65585-XY	.650/16.51	.060/1.52	.230/5.84	YES	YES	YES	YES	NO	NO
65586-XY	NOT AVAILABLE								
65587-XY	NOT AVAILABLE								
65588-XY	.255/6.48	.185/4.69	.230/5.84	YES	YES	YES	YES	NO	NO
65640-XY	.104/2.64	.050/1.27	.300/7.62	YES	YES	YES	YES	NO	NO
65622-XY	.229/5.82	.175/4.45	.300/7.62	YES	YES	YES	YES	NO	NO
65956-XY	.120/3.05	.060/1.52	.318/8.08	YES	YES	YES	YES	NO	NO
65964-XY	.255/6.48	.310/7.87	.230/5.84	YES	YES	YES	YES	NO	NO
66488-XY	NOT AVAILABLE								

OBSOLETE OBSOLETE

mat'l. code			tolerances unless otherwise specified			CUSTOMER COPY		BERG ELECTRONICS	
ltr	ecn no	dr	date	linear	.XX ± .01 / X ± .3	projection	title		
P					.XXX ± .005 / .XX ± .13		BERGSTIK® I HEADER		
R				angles	.XXX ± .0020 / .XXX ± .051		.125/3.18cc SR RIGHT ANGLE		
				dr	BK CHUA 15JUL96	INCH/MM	product family	BERGSTIK	code
				enr	JOYCE PEH 15JUL96	←	size	dwg no	sheet
				chr	JOYCE PEH 15JUL96	scale	A	65580	3 of
				appd	MK KAN 15JUL96	1:1			
sheet index	revision sheet								

form no. 7530-001-103

cage code 22526