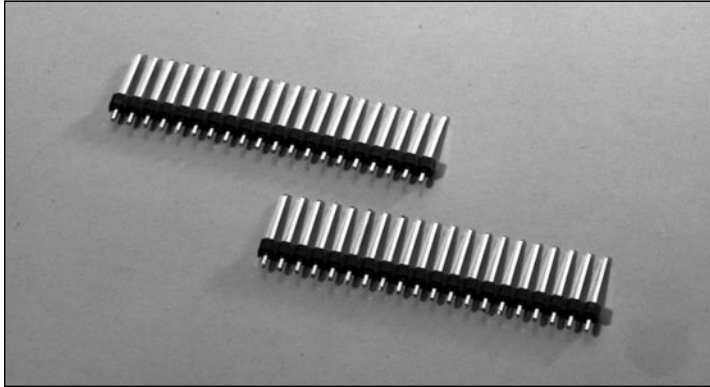


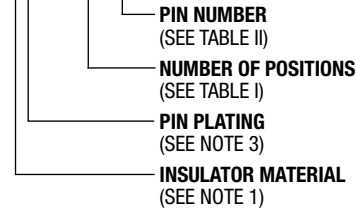
# .100" (2.54mm) Single Row, Through Hole Vertical Header with Special Standoffs



## 9100 SERIES ("POST/BOXE")

PART NUMBER LEGEND

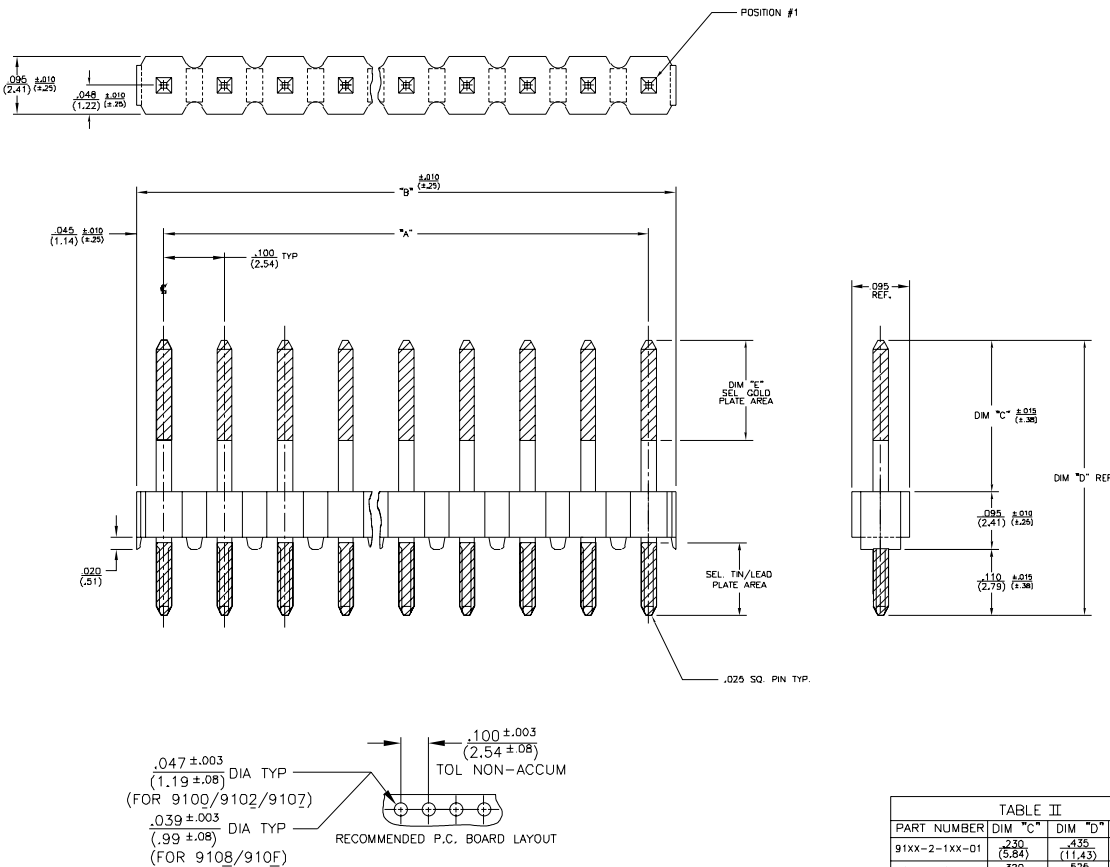
### 91XX-2-1XX-XX



**MATING CONNECTORS: 9000 SERIES**

### NOTES:

- INSULATOR MATERIAL:  
 91DX-2-1XX-XX - POLYESTER (PET), 30% GLASS REINFORCED, UL 94V-0, COLOR: BLACK  
 91LX-2-1XX-XX - POLYESTER (PCT), 30% GLASS REINFORCED, UL 94V-0, COLOR: BLACK
- PIN MATERIAL: PHOSPHOR BRONZE
- PIN FINISH:  
 91XG-2-1XX-XX - .000150/.0005 BRITE TIN PLATE OVER .000050/.000100 NICKEL PLATE.  
 91XJ-2-1XX-XX - .000030 OVERALL GOLD PLATE OVER .000050/.000150 NICKEL PLATE.  
 91XB-2-1XX-XX - .000030 SEL. GOLD PLATE IN CONTACT AREA OVER .000050/.000150 NICKEL PLATE ALL OVER; .0001/.0002 SEL. 90/10 TIN/LEAD PLATE ON SOLDER TAIL AS INDICATED.  
 91XE-2-1XX-XX - .000015 SEL. GOLD PLATE IN CONTACT AREA OVER .000050/.000150 NICKEL PLATE ALL OVER; .0001/.0002 SEL. 90/10 TIN/LEAD PLATE ON SOLDER TAIL AS INDICATED.
- ALL DIMS ARE IN IN./MM.



PART NUMBER	DIM "A"	DIM "B"
91XX-2-102-XX	.100 (2.54)	.190 (4.82)
91XX-2-103	.200 (5.08)	.290 (7.36)
91XX-2-104	.300 (7.62)	.390 (9.91)
91XX-2-105	.400 (10.16)	.490 (12.45)
91XX-2-106	.500 (12.70)	.590 (14.98)
91XX-2-107	.600 (15.24)	.690 (17.53)
91XX-2-108	.700 (17.78)	.790 (20.06)
91XX-2-109	.800 (20.32)	.890 (22.61)
91XX-2-110	.900 (22.86)	.990 (25.15)
91XX-2-111	1.000 (25.40)	1.090 (27.68)
91XX-2-112	1.100 (27.94)	1.190 (30.23)
91XX-2-113	1.200 (30.48)	1.290 (32.75)
91XX-2-114	1.300 (33.02)	1.390 (35.31)
91XX-2-115	1.400 (35.56)	1.490 (37.85)
91XX-2-116	1.500 (38.10)	1.590 (40.39)
91XX-2-117	1.600 (40.64)	1.690 (42.93)
91XX-2-118	1.700 (43.18)	1.790 (45.47)
91XX-2-119	1.800 (45.72)	1.890 (48.01)
91XX-2-120	1.900 (48.26)	1.990 (50.55)
91XX-2-121	2.000 (50.80)	2.090 (53.09)
91XX-2-122	2.100 (53.34)	2.190 (55.63)
91XX-2-123	2.200 (55.88)	2.290 (58.17)
91XX-2-124	2.300 (58.42)	2.390 (60.71)
91XX-2-125	2.400 (60.96)	2.490 (63.25)
91XX-2-126	2.500 (63.50)	2.590 (65.79)
91XX-2-127	2.600 (66.04)	2.690 (68.32)
91XX-2-128	2.700 (68.58)	2.790 (70.87)
91XX-2-129	2.800 (71.12)	2.890 (73.41)
91XX-2-130	2.900 (73.66)	2.990 (75.95)
91XX-2-131	3.000 (76.20)	3.090 (78.49)
91XX-2-132	3.100 (78.74)	3.190 (81.03)
91XX-2-133	3.200 (81.28)	3.290 (83.57)
91XX-2-134	3.300 (83.82)	3.390 (86.11)
91XX-2-135	3.400 (86.36)	3.490 (88.65)
91XX-2-136	3.500 (88.90)	3.590 (91.19)
91XX-2-137	3.600 (91.44)	3.690 (93.73)
91XX-2-138-XX	3.700 (93.98)	3.790 (96.27)
91XX-2-139-XX	3.800 (96.52)	3.890 (98.81)
91XX-2-140-XX	3.900 (99.06)	3.990 (101.35)

PART NUMBER	DIM "C"	DIM "D"	DIM "E"
91XX-2-1XX-01	.230 (5.84)	.435 (11.43)	.165 (4.19)
91XX-2-1XX-02	.320 (8.13)	.526 (13.72)	.200 (5.08)



North and South America:  
**Methode Electronics, Inc. Connector Products**  
 1700 Hicks Road • Rolling Meadows, IL 60008 USA  
 847-392-3500 • Toll Free: 800-323-6864 • Fax: 847-392-9404  
 Email: info@methode.com • Web: www.methode.com/connector/index.html

Europe:  
**Methode Electronics Ireland, Ltd.**  
 Unit H, Crossagalla Business Park, Ballysimon Rd. • Limerick, Ireland  
 +353 (0) 61 401222 • Fax: +353 (0) 61 401942  
 Email: info@methode.ie • Web: ireland.methode.com/main.html

Far East:  
**Methode Electronics Far East, Pte. Ltd.**  
 1 Tuas Lane, Jurong Town • Singapore 638610  
 65-68615444 • Fax: 65-68614777  
 Email: sales@methode.com.sg • Web: www.methode.com/mefe/index.html