

STYLE	TAIL/OPTION	"A"	"B"	TERMINAL #1	TERMINAL #2	TERMINAL #3
-01	-RA	.103 [2.62]	.126 [3.20]	T-1S13-02-XX-2	T-1S13-03-XX-2	T-1S13-17-XX-2
-01	-FC	.139 [3.53]	.126 [3.20]	T-1S13-19-XX-2	T-1S13-22-XX-2	N/A
-01	RA W/END SHROUD	.139 [3.53]	.126 [3.20]	T-1S13-19-XX-2	T-1S13-22-XX-2	N/A
-01	*-FE	.287 [7.29]	.126 [3.20]	T-1S13-22-XX-2	T-1S13-28-XX-2	N/A
-04	-RA	.100 [2.54]	.075 [1.91]	T-1S13-20-XX-2	T-1S13-08-XX-2	N/A
-04	-FC	.150 [3.81]	.075 [1.91]	T-1S13-02-XX-2	T-1S13-03-XX-2	N/A
-04	RA W/END SHROUD	.150 [3.81]	.075 [1.91]	T-1S13-02-XX-2	T-1S13-03-XX-2	N/A
-05	-RA	.090 [2.29]	.085 [1.65]	T-1S13-07-XX-2	T-1S13-13-XX-2	N/A
-05	-FC	.160 [4.06]	.085 [1.65]	T-1S13-02-XX-2	T-1S13-03-XX-2	N/A
-05	RA W/END SHROUD	.160 [4.06]	.085 [1.65]	T-1S13-02-XX-2	T-1S13-03-XX-2	N/A

NOTES:

- PARTS MAY BE CUT TO POSITION.
- MEASURED AT BEND RADIUS, NOT AT END OF PIN.
- GOLD PLATING TO BE ON POST, TIN PLATING ON TAIL.
- (C) REPRESENTS A CRITICAL DIMENSION.
- MINIMUM PUSHOUT FORCE: 1.0 LB.
- NOTE DELETED.
- MAX CUT FLASH TO BE .020.

TMMH-1XX-XX-XX-X-XX-XX-XXX

No. OF POSITIONS
 -02 THRU -50
 (PER ROW)

LEAD STYLE

- 01: .126 [3.20]
- 04: .075 [1.91]
- 05: .085 [1.65] MIN (SEE TABLE 1)

POLARIZATION

SPECIFY POS -XXX TO BE OMITTED

SHROUD OPTION: (AVAILABLE ON -D ROW OPTION ONLY)

- ES: END SHROUDS (SEE FIG. 2 - SHT 2, 9 POS MIN) (NOT AVAILABLE WITH -FC TAIL OPTION)
- EP: GUIDE POST (SEE FIG. 4 - SHT 2, 9 POS MIN) (NOT AVAILABLE WITH -FC TAIL OPTION)
- EL: BOARD LOCK (SEE FIG. 3 - SHT 2, 9 POS MIN) (NOT AVAILABLE WITH -FC TAIL OPTION)

TAIL OPTION

- RA: RIGHT ANGLE
- FC: FLEX CARD (RIGHT ANGLE; -D ROW OPTION ONLY).
- FE: ELEVATED FLEX CARD (RIGHT ANGLE; -D ROW OPTION ONLY).

ROW OPTION

- D: DOUBLE (USE TMMH-XX-D-X)
- T: TRIPLE (USE TMMH-XX-T-X) (AVAILABLE WITH -01 LEAD STYLE ONLY).

* = TAIL OPTION TO BE USED ON RIGHT ANGLE ONLY

PLATING SPECIFICATION

- L: LIGHT SELECTIVE GOLD (USE T-1S13-XX-L-2)
- F: FLASH GOLD (USE T-1S13-XX-F-2)
- S: SELECTIVE GOLD (USE T-1S13-XX-S-2)
- G: GOLD (USE T-1S13-XX-G-2)
- T: TIN (USE T-1S13-XX-T-2)
- H: HEAVY GOLD (USE T-1S13-XX-H-2)
- TM: MATTE TIN (USE T-1S13-XX-T-2)
- LM: LIGHT SELECTIVE GOLD/MATTE TIN TAIL (USE T-1S13-XX-L-2)
- FM: FLASH GOLD/MATTE TIN TAIL (USE T-1S13-XX-F-2)
- SM: SELECTIVE GOLD/MATTE TIN TAIL (USE T-1S13-XX-S-2)

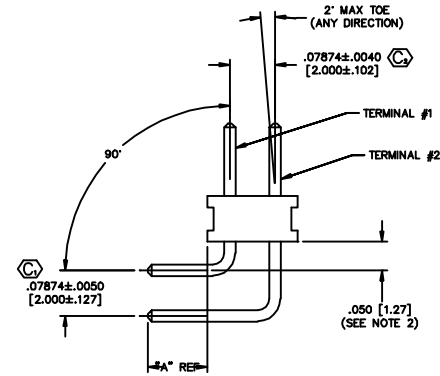
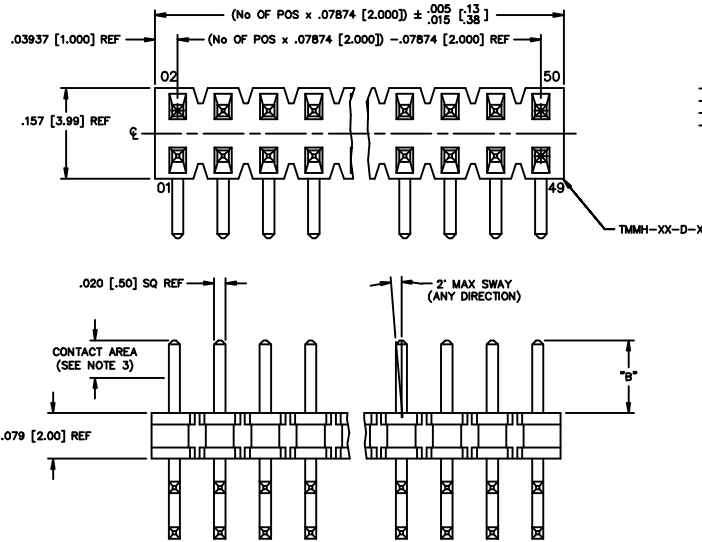


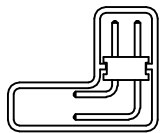
FIG. 1

DO NOT SCALE FROM THIS PRINT

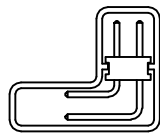
PACKAGING VIEW

* ONLY TUBE POSITIONS -05 THROUGH -50

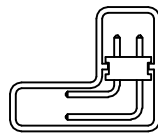
SCALE: .5x



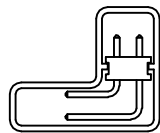
-01-RA
 PT-TMMH-003-RA
 TP-03 : FOR -EX OPTIONS
 USE PT-1-24-01-45 TP-07



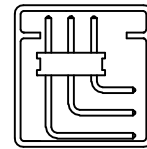
-01-FC
 PT-TMMH-003-RA
 TP-03



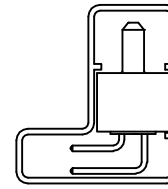
-04-RA, -05-RA
 PT-TMMH-003-RA
 TP-03



-04-FC, -05-FC
 PT-TMMH-003-RA
 TP-03



-01-T-RA
 PT-1-24-09F-109
 TP-29



-01/04/05-RA/FE-EX
 PT-TMMH004-RA-EX
 TP-07

PROPRIETARY NOTE
 THE FOLLOWING INFORMATION IS UNCLASSIFIED AND PUBLIC RELEASE IS AUTHORIZED EXCEPT WHERE SHOWN OTHERWISE. IT IS THE PROPERTY OF SAMTEC AND IS TO BE CONTAINED WITHIN THE SAMTEC COMPANY AND ITS SUPPLIERS AND CONTRACTORS. IT IS TO BE DESTROYED WHEN NO LONGER NEEDED FOR THE ORIGINAL PURPOSE FOR WHICH IT WAS CREATED.

samtec

520 PARK EAST BLVD., NEW ALBANY, INDIANA 47150
 PHONE (812) 944-6733 P.O. BOX 1147
 CODE 55322

MADE BY: PURVIS 12-17-96

TMMH-1XX-XX-XX-X-XX-XX-XXX
 SHEET 1 OF 2