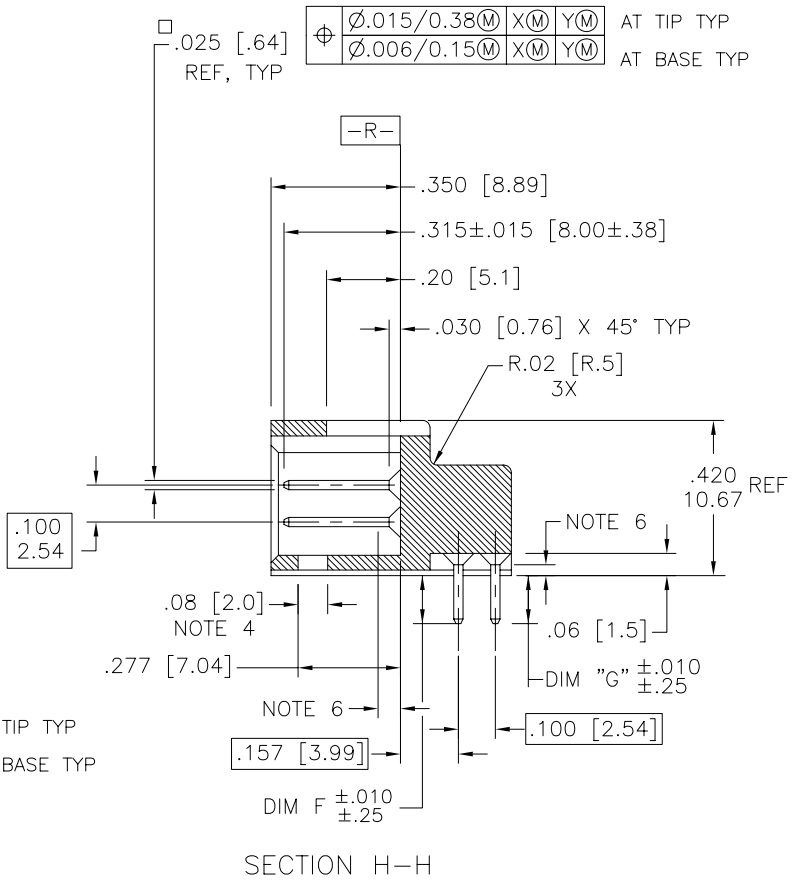
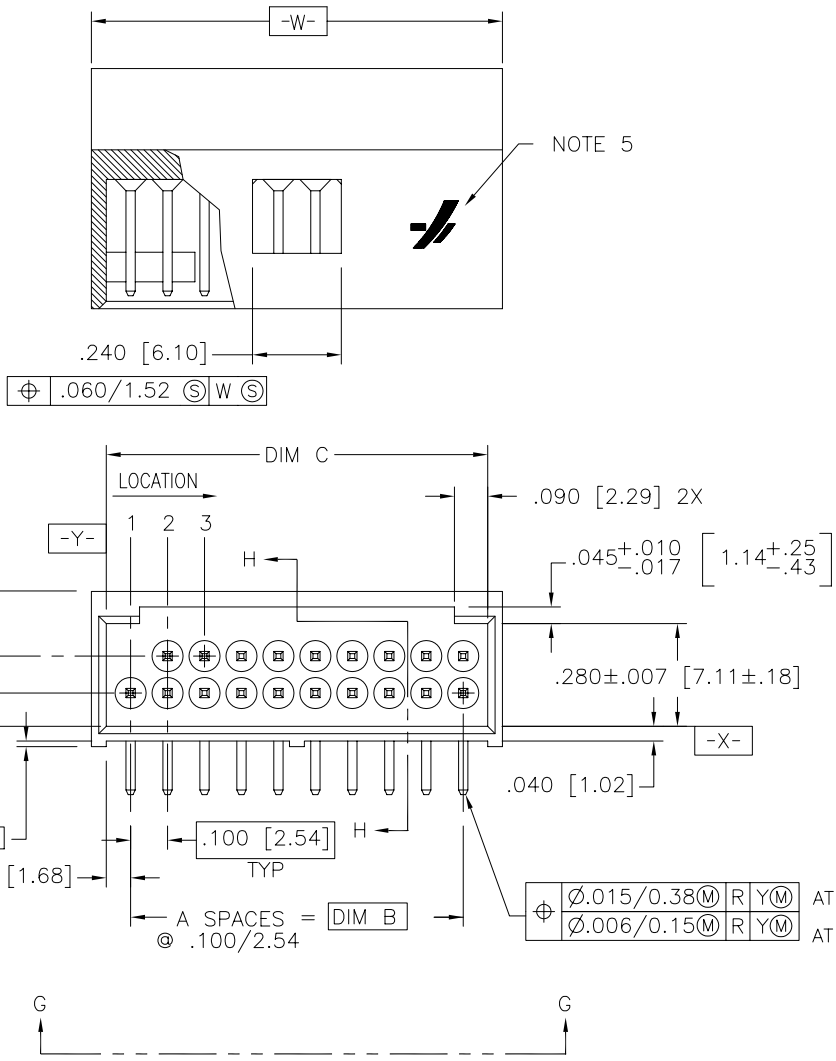


Tous droits strictement reserves. Reproduction ou communication a des tiers interalite sous quelque forme que ce soit sans autorisation ecrite du proprietaire. Propriete de c FCI. Droits de reproduction FCI.

**FCI**

All rights strictly reserved. Reproduction or issue to third parties in any form whatever is not permitted without written authority from the proprietor. Property of FCI. Copyright FCI.

PRODUCT NUMBER  
SEE TABLE



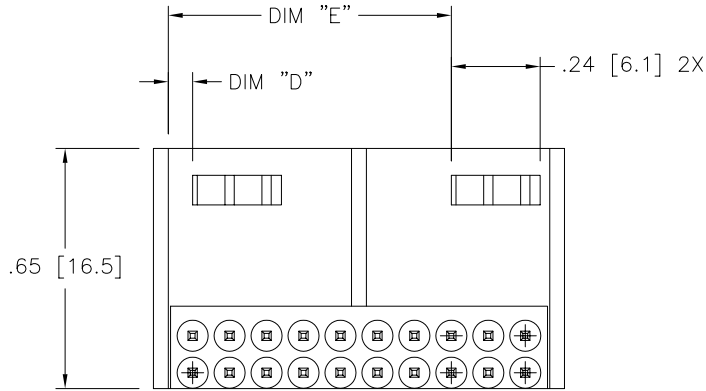
mat'l. code NOTE 1 & 3				tolerances unless otherwise specified				CUSTOMER COPY		<b>FCI</b> www.fciconnect.com	
ltr	ecn no	dr	date	linear	.xx ±.01/.x±.3			projection INCH/MM	title		
C	REDRAWN	RLS	5/4/90		.xxx ±.005/.xx±0.13				RIGHT ANGLE HEADER FOR ROUND WIRE RECEPTACLE		
D	v00891	MDF	5/2/00		.xxxx ±.0020/.xxx±0.051				product family HEADER		
E	M05-0167	ERE	07/25/05		angles 0° ±2°				size/ dwg no		
				dr	R. SEIPLE	5/4/90	scale 2:1	A		code 213	
				enr	L. HUTTON	5/4/90		68667		sheet 1 of 4	
				chr	H. SUNDY	5/4/90					
				appd	H. SUNDY	5/4/90					
sheet index	revision sheet	E 1	E 2	E 3	E 4						

Tous droits strictement reserves. Reproduction ou communication a des tiers interdite sous quelque forme que ce soit sans autorisation ecrite du proprietaire. Propriete de c FCI. Droits de reproduction FCI.



All rights strictly reserved. Reproduction or issue to third parties in any form whatever is not permitted without written authority from the proprietor. Property of FCI. Copyright FCI.

PRODUCT NUMBER  
SEE TABLE



VIEW G-G

NOTES:

- ①. TERMINAL MATERIAL: 3/4 HARD PHOS BRONZE ALLOY – UNS-C51000.
2. PLATING: 15μ"/.38μ Au OVER 50μ"/1.27μ Ni.
- ③. MOLDING MATERIAL: GLASS-FILLED POLYESTER FLAME RETARDENT PER UL 94V-0, COLOR: BLACK
- ④. .02/.5 MAX. FLASH PERMISSIBLE AROUND ALL WINDOWS.
- ⑤. FCI LOGO MOLDED IN ON DATUM SURFACE –Z– APPROXIMATELY AS SHOWN.
- ⑥. .03/.8 MAX. FLASH PERMISSIBLE ON PINS, BOTH ENDS.
- ⑦. PALLADIUM PLATED PRODUCT HAS GOLD FLASH.
- ⑧. OTHER PLATINGS ARE AVAILABLE ON P/N'S 68668, 68669 & 68670.
- ⑨. ADD "LF" SUFFIX AT THE END OF PART NUMBER FOR LEAD FREE OPTION
- ⑩. THIS PRODUCT MEETS EUROPEAN UNION DIRECTIVES AND OTHER COUNTRY REGULATION AS DESCRIBED IN GS-22-008.
11. THE HOUSING WILL WITHSTAND EXPOSURE TO 260°C PEAK TEMPERATURE FOR 15 SECONDS IN A WAVE SOLDER APPLICATION WITH A 1.5mm MINIMUM THICK CIRCUIT BOARD. SEE APPLICATION NOTES/PROCEDURES IF THEY ARE AVAILABLE.

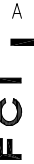
mat'l. code		tolerances unless otherwise specified			CUSTOMER COPY		 www.fciconnect.com	
ltr	ecn no	dr	date	linear	.xx ±.01/.X±.3	projection	title	
E					.xxx ±.005/.XX±0.13	 INCH/MM	RIGHT ANGLE HEADER FOR ROUND WIRE RECEPTACLE	
				angles	.xxxx ±.0020/.xxx±0.051		product family	code
					0° ±2°	scale	HEADER	213
				dr	R. SEIPLE 5/4/90	2:1	size	sheet
				enr	L. HUTTON 5/4/90		A	2 of
				chr	H. SUNDY 5/4/90		68667	
				appd	H. SUNDY 5/4/90			
sheet index	revision sheet							

Tous droits strictement reserves. Reproduction ou communication a des tiers  
interdite sous quelque forme que ce soit sans autorisation ecrite du proprietaire.  
Propriete de c FCI. Droits de reproduction FCI.



PRODUCT NO	NO.OF	DIM B	DIM B	DIM C	DIM C	DIM D	DIM D	DIM E	DIM E	DIM F	DIM F	DIM G	DIM G	POLARIZED	A	
NOTE 9	POS	PINS	ENGLISH	METRIC	ENGLISH	METRIC	ENGLISH	METRIC	ENGLISH	METRIC	ENGLISH	METRIC	ENGLISH	METRIC	POSITIONS	SPACES
68667-001	6	6	0.200	5.08	0.332	8.43	0.066	1.68	000	000	0.130	3.30	0.130	3.30	----	2
68667-002	8	8	0.300	7.62	0.432	10.97	0.066	1.68	0.000	0.00	0.130	3.30	0.130	3.30	----	3
68667-003	10	10	0.400	10.16	0.532	13.51	0.166	4.22	0.000	0.00	0.130	3.30	0.130	3.30	----	4
68667-004	12	12	0.500	12.70	0.632	16.05	0.166	4.22	0.000	0.00	0.130	3.30	0.130	3.30	----	5
68667-005	14	14	0.600	15.24	0.732	18.59	0.266	6.76	0.000	0.00	0.130	3.30	0.130	3.30	----	6
68667-006	16	16	0.700	17.78	0.832	21.13	0.266	6.76	0.000	0.00	0.130	3.30	0.130	3.30	----	7
68667-007	18	18	0.800	20.32	0.932	23.67	0.366	9.30	0.000	0.00	0.130	3.30	0.130	3.30	----	8
68667-008	20	20	0.900	22.86	1.032	26.21	0.066	1.68	0.766	19.46	0.130	3.30	0.130	3.30	----	9
68667-009	22	22	1.000	25.40	1.132	28.75	0.066	1.68	0.866	22.00	0.130	3.30	0.130	3.30	----	10
68667-010	24	24	1.100	27.94	1.232	31.29	0.066	1.68	0.966	24.54	0.130	3.30	0.130	3.30	----	11
68667-011	26	26	1.200	30.48	1.332	33.83	0.066	1.68	1.066	27.08	0.130	3.30	0.130	3.30	----	12
68667-012	28	28	1.300	33.02	1.432	36.37	0.066	1.68	1.166	29.62	0.130	3.30	0.130	3.30	----	13
68667-013	30	30	1.400	35.56	1.532	38.91	0.066	1.68	1.266	32.16	0.130	3.30	0.130	3.30	----	14
68667-014	32	32	1.500	38.10	1.632	41.45	0.066	1.68	1.366	34.70	0.130	3.30	0.130	3.30	----	15
68667-015	34	34	1.600	40.64	1.732	43.99	0.066	1.68	1.466	37.24	0.130	3.30	0.130	3.30	----	16
68667-016	36	36	1.700	43.18	1.832	46.53	0.066	1.68	1.566	39.78	0.130	3.30	0.130	3.30	----	17
68667-017	38	38	1.800	45.72	1.932	49.07	0.066	1.68	1.666	42.32	0.130	3.30	0.130	3.30	----	18
68667-018	40	40	1.900	48.26	2.032	51.61	0.066	1.68	1.766	44.86	0.130	3.30	0.130	3.30	----	19
68667-019	42	42	2.000	50.80	2.132	54.15	0.066	1.68	1.866	47.40	0.130	3.30	0.130	3.30	----	20
68667-020	44	44	2.100	53.34	2.232	56.69	0.066	1.68	1.966	49.94	0.130	3.30	0.130	3.30	----	21
68667-021	46	46	2.200	55.88	2.332	59.23	0.066	1.68	2.066	52.48	0.130	3.30	0.130	3.30	----	22
68667-022	48	48	2.300	58.42	2.432	61.77	0.066	1.68	2.166	55.02	0.130	3.30	0.130	3.30	----	23
68667-023	50	50	2.400	60.96	2.532	64.31	0.066	1.68	2.266	57.56	0.130	3.30	0.130	3.30	----	24
68667-024	52	52	2.500	63.50	2.632	66.85	0.066	1.68	2.366	60.10	0.130	3.30	0.130	3.30	----	25
68667-025	54	54	2.600	66.04	2.732	69.39	0.066	1.68	2.466	62.64	0.130	3.30	0.130	3.30	----	26
68667-026	56	56	2.700	68.58	2.832	71.93	0.066	1.68	2.566	65.18	0.130	3.30	0.130	3.30	----	27
68667-027	58	58	2.800	71.12	2.932	74.47	0.066	1.68	2.666	67.72	0.130	3.30	0.130	3.30	----	28
68667-028	60	60	2.900	73.66	3.032	77.01	0.066	1.68	2.766	70.26	0.130	3.30	0.130	3.30	----	29
68667-029	62	62	3.000	76.20	3.132	79.55	0.066	1.68	2.866	72.80	0.130	3.30	0.130	3.30	----	30
68667-030	64	64	3.100	78.74	3.232	82.09	0.066	1.68	2.966	75.34	0.130	3.30	0.130	3.30	----	31
68667-031	66	66	3.200	81.28	3.332	84.63	0.066	1.68	3.066	77.88	0.130	3.30	0.130	3.30	----	32
68667-032	68	68	3.300	83.82	3.432	87.17	0.066	1.68	3.166	80.42	0.130	3.30	0.130	3.30	----	33
68667-033	70	70	3.400	86.36	3.532	89.71	0.066	1.68	3.266	82.96	0.130	3.30	0.130	3.30	----	34
68667-034	72	72	3.500	88.90	3.632	92.25	0.066	1.68	3.366	85.50	0.130	3.30	0.130	3.30	----	35
68667-035	6	6	0.200	5.08	0.332	8.43	0.066	1.68	0.000	0.00	0.130	3.30	0.130	3.30	----	2
68667-036	8	8	0.300	7.62	0.432	10.97	0.066	1.68	0.000	0.00	0.130	3.30	0.130	3.30	----	3
68667-037	10	10	0.400	10.16	0.532	13.51	0.166	4.22	0.000	0.00	0.130	3.30	0.130	3.30	----	4
68667-038	12	12	0.500	12.70	0.632	16.05	0.166	4.22	0.000	0.00	0.130	3.30	0.130	3.30	----	5
68667-039	14	14	0.600	15.24	0.732	18.59	0.266	6.76	0.000	0.00	0.130	3.30	0.130	3.30	----	6
68667-040	16	16	0.700	17.78	0.832	21.13	0.266	6.76	0.000	0.00	0.130	3.30	0.130	3.30	----	7

All rights strictly reserved. Reproduction or issue to third parties in any  
form whatever is not permitted without written authority from the proprietor.  
Property of FCI. Copyright FCI.



B

mat'l. code				tolerances unless otherwise specified				CUSTOMER COPY		www.fciconnect.com	
ltr	ecn no	dr	date	linear	.xx ±0.01/.X±.3			projection	title		
E					.xxx ±.005/.XX±0.13				RIGHT ANGLE HEADER FOR ROUND WIRE RECEPTACLE		
				angles	0° ±2°				product family		
				dr	R. SEIPLE	5/4/90	INCH/MM		HEADER		code
				enr	L. HUTTON	5/4/90	scale	size: dwg no		213	
				chr	H. SUNDY	5/4/90		1:1	A		68667
				appd	H. SUNDY	5/4/90			sheet 3 of		
sheet index	revision sheet										

A

B

Tous droits strictement reserves. Reproduction ou communication a des tiers interalite sous quelque forme que ce soit sans autorisation ecrite du proprietaire. Propriete de c FCI. Droits de reproduction FCI.



All rights strictly reserved. Reproduction or issue to third parties in any form whatever is not permitted without written authority from the proprietor. Property of FCI. Copyright FCI.

PRODUCT NO	NO.OF	DIM B	DIM B	DIM C	DIM C	DIM D	DIM D	DIM E	DIM E	DIM F	DIM F	DIM G	DIM G	POLARIZED	A	
NOTE 9	POS	PINS	ENGLISH	METRIC	ENGLISH	METRIC	ENGLISH	METRIC	ENGLISH	METRIC	ENGLISH	METRIC	ENGLISH	METRIC	POSITIONS	SPACES
68667-041	18	18	0.800	20.32	0.932	23.67	0.366	9.30	0.000	0.00	0.130	3.30	0.130	3.30	----	8
68667-042	20	20	0.900	22.86	1.032	26.21	0.066	1.68	0.766	19.46	0.130	3.30	0.130	3.30	----	9
68667-043	22	22	1.000	25.40	1.132	28.75	0.066	1.68	0.866	22.00	0.130	3.30	0.130	3.30	----	10
68667-044	24	24	1.100	27.94	1.232	31.29	0.066	1.68	0.966	24.54	0.130	3.30	0.130	3.30	----	11
68667-045	26	26	1.200	30.48	1.332	33.83	0.066	1.68	1.066	27.08	0.130	3.30	0.130	3.30	----	12
68667-046	28	28	1.300	33.02	1.432	36.37	0.066	1.68	1.166	29.62	0.200	5.08	0.200	5.08	----	13
68667-047	30	30	1.400	35.56	1.532	38.91	0.066	1.68	1.266	32.16	0.200	5.08	0.200	5.08	----	14
68667-048	32	32	1.500	38.10	1.632	41.45	0.066	1.68	1.366	34.70	0.200	5.08	0.200	5.08	----	15
68667-049	34	34	1.600	40.64	1.732	43.99	0.066	1.68	1.466	37.24	0.200	5.08	0.200	5.08	----	16
68667-050	36	36	1.700	43.18	1.832	46.53	0.066	1.68	1.566	39.78	0.200	5.08	0.200	5.08	----	17
68667-051	38	38	1.800	45.72	1.932	49.07	0.066	1.68	1.666	42.32	0.200	5.08	0.200	5.08	----	18
68667-052	40	40	1.900	48.26	2.032	51.61	0.066	1.68	1.766	44.86	0.200	5.08	0.200	5.08	----	19
68667-053	42	42	2.000	50.80	2.132	54.15	0.066	1.68	1.866	47.40	0.200	5.08	0.200	5.08	----	20
68667-054	44	44	2.100	53.34	2.232	56.69	0.066	1.68	1.966	49.94	0.200	5.08	0.200	5.08	----	21
68667-055	46	46	2.200	55.88	2.332	59.23	0.066	1.68	2.066	52.48	0.200	5.08	0.200	5.08	----	22
68667-056	48	48	2.300	58.42	2.432	61.77	0.066	1.68	2.166	55.02	0.200	5.08	0.200	5.08	----	23
68667-057	50	50	2.400	60.96	2.532	64.31	0.066	1.68	2.266	57.56	0.200	5.08	0.200	5.08	----	24
68667-058	52	52	2.500	63.50	2.632	66.85	0.066	1.68	2.366	60.10	0.200	5.08	0.200	5.08	----	25
68667-059	54	54	2.600	66.04	2.732	69.39	0.066	1.68	2.466	62.64	0.200	5.08	0.200	5.08	----	26
68667-060	56	56	2.700	68.58	2.832	71.93	0.066	1.68	2.566	65.18	0.200	5.08	0.200	5.08	----	27
68667-061	58	58	2.800	71.12	2.932	74.47	0.066	1.68	2.666	67.72	0.200	5.08	0.200	5.08	----	28
68667-062	60	60	2.900	73.66	3.032	77.01	0.066	1.68	2.766	70.26	0.200	5.08	0.200	5.08	----	29
68667-063	62	62	3.000	76.20	3.132	79.55	0.066	1.68	2.866	72.80	0.200	5.08	0.200	5.08	----	30
68667-064	64	64	3.100	78.74	3.232	82.09	0.066	1.68	2.966	75.34	0.200	5.08	0.200	5.08	----	31
68667-065	66	66	3.200	81.28	3.332	84.63	0.066	1.68	3.066	77.88	0.200	5.08	0.200	5.08	----	32
68667-066	68	68	3.300	83.82	3.432	87.17	0.066	1.68	3.166	80.42	0.200	5.08	0.200	5.08	----	33
68667-067	70	70	3.400	86.36	3.532	89.71	0.066	1.68	3.266	82.96	0.200	5.08	0.200	5.08	----	34
68667-068	72	72	3.500	88.90	3.632	92.25	0.066	1.68	3.366	85.50	0.200	5.08	0.200	5.08	----	35
68667-069	8	4	3.600	91.44	3.732	94.79	0.066	1.68	3.466	88.04	0.130	3.30	0.130	3.30	----	3
68667-070	50	50	3.700	93.98	3.832	97.33	0.066	1.68	3.566	90.58	0.155	3.94	0.235	5.97	----	24
68667-071	8	6	3.800	96.52	3.932	99.87	0.066	1.68	3.666	93.12	0.130	3.30	0.130	3.30	----	3
68667-072	10	10	0.400	10.16	0.532	13.51	0.166	4.22	0.000	0.000	0.130	3.30	0.095	2.41	----	4
68667-073	18	18	0.800	20.32	0.932	23.67	0.366	9.30	0.000	0.000	0.130	3.30	0.095	2.41	----	8

mat'l. code				tolerances unless otherwise specified				CUSTOMER COPY		 www.fciconnect.com	
ltr	ecn no	dr	date	linear	.XX ±.01/.X±.3			projection	title		
E					.XXX ±.005/.XX±0.13				RIGHT ANGLE HEADER		
					.XXXX ±.0020/.XXX±0.051				FOR ROUND WIRE RECEPTACLE		
				angles	0° ±2°			 INCH/MM	product family		code
				dr	R. SEIPLE	5/4/90	HEADER		213		
				enr	L. HUTTON	5/4/90	size  dwg no		sheet		
				chr	H. SUNDY	5/4/90	A		4 of		
				appd	H. SUNDY	5/4/90	scale		68667		
sheet index		revision sheet									