

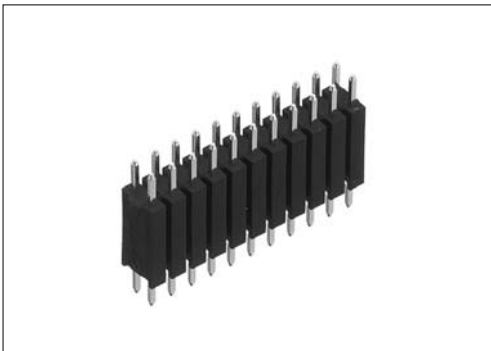
# Straight through hole type male connector for PCB LPC-( )MH2( )

2 mm pitch connector

For PCB

Straight Through hole

RoHS

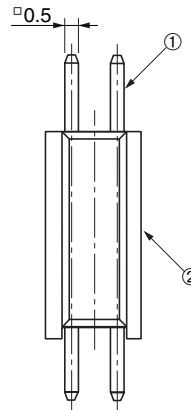
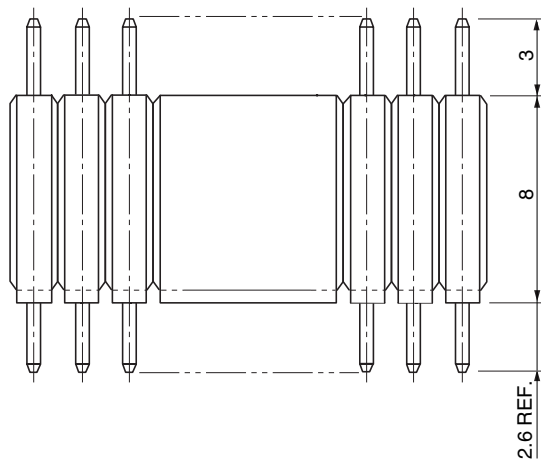
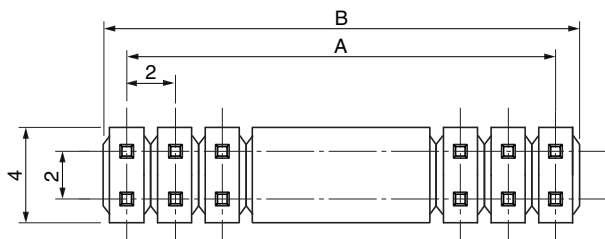


● Configuration of product Part No.

**LPC- ( ) MH2 ( )**

①            ②            ③

- ① Series name
- ② No. of contacts: 2-50
- ③ Contact plating  
+S: Tin plate  
G : Gold plate



● Dimensions

Part No.	A	B
LPC-2MH2( )	-	2
LPC-4MH2( )	2	4
LPC-6MH2( )	4	6
LPC-8MH2( )	6	8
LPC-10MH2( )	8	10
LPC-12MH2( )	10	12
LPC-14MH2( )	12	14
LPC-16MH2( )	14	16
LPC-18MH2( )	16	18
LPC-20MH2( )	18	20
LPC-24MH2( )	22	24
LPC-26MH2( )	24	26
LPC-28MH2( )	26	28
LPC-30MH2( )	28	30
LPC-32MH2( )	30	32
LPC-34MH2( )	32	34
LPC-36MH2( )	34	36
LPC-38MH2( )	36	38
LPC-40MH2( )	38	40
LPC-42MH2( )	40	42
LPC-44MH2( )	42	44
LPC-46MH2( )	44	46
LPC-48MH2( )	46	48
LPC-50MH2( )	48	50

● Components

① Insulator
② Contacts

Because some combinations of "Configurations of Product Part No.", are under consideration for development, please contact us for availability details.

Mating connectors: LPC series female connectors or shunt plugs