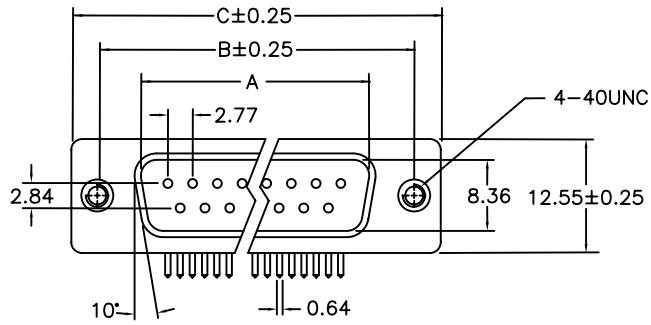
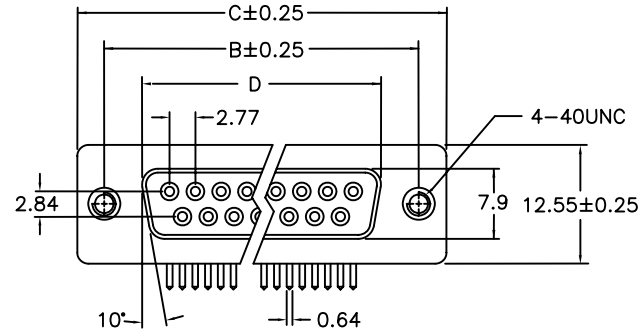


REV.	SPECIFICATION	ECN NO.	APPD.

Male



Female



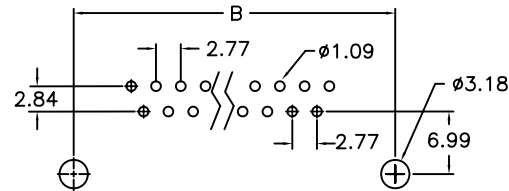
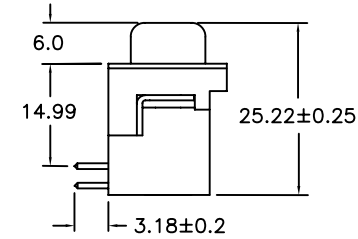
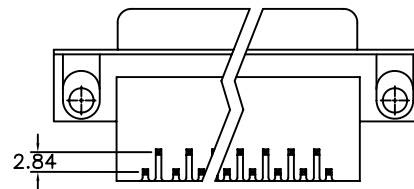
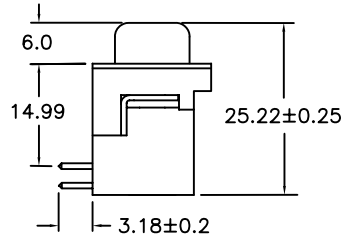
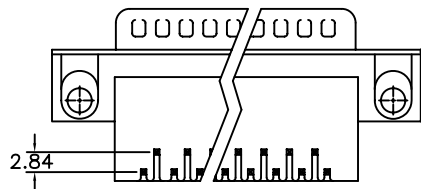
Material:

Housing: Thermoplastic Polyester Glass Filled UL94V-0.
 Contacts: Copper Alloy.
 Shell: Metal.

Electrical Characteristics:

Current Rating: 1 AMP.
 Dielectric Withstanding Voltage: AC 1000V For 1 minute.
 Insulator Resistance: 1000MΩ min. at DC 500V.
 Contact Resistance: 30mΩ max. at DC 100mA.
 Operating Temperature: -55°C~+105°C.

***RoHS Compliant**



P.C. Board Layout

7906- xx M V A
 Series Position M: Male V: Short Mounting Flange With .315 Mounting Flange Hole A: Tray Package
 F: Female Dimension With Grounding Straps With Riveted Threaded Inserts.

Position	Dimension			
	A	B	C	D
9	16.92	24.99	30.81	16.33
15	25.25	33.32	39.14	24.66
25	38.96	47.04	53.04	38.38
37	55.42	63.50	69.32	54.84

Tolerances	Dwg. No.	7906D03008
x = ±0.5	Projection	
.x = ±0.25	Unit	mm
.xx = ±0.15	Scale	1:1
	Drawn By	ZJJ 11/07'11

Title: 7906 Series
 D-SUB Right
 Angle Type

OUPIN
 OUPIN ELECTRONIC(KUNSHAN) CO., LTD.
 P/N: 7906-xxMVA&7906-xxFVA
 SHEET 1/1 Ver.No. A5

512