

FEATURES AND SPECIFICATIONS

Reference Information

Packaging: Bag
 Mates With: 52419
 Designed In: Millimeters

Electrical

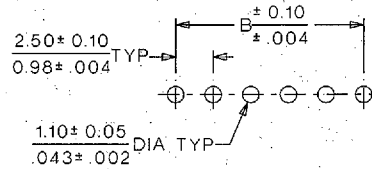
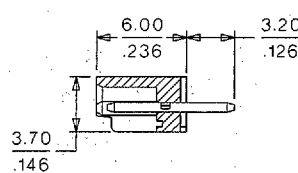
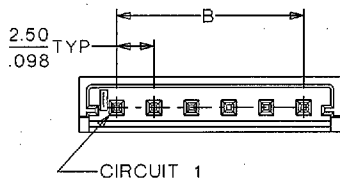
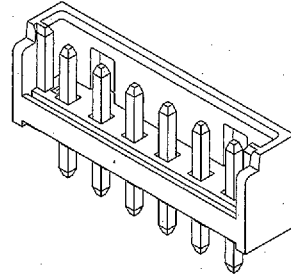
Voltage: 250V
 Current: 2.0A
 Contact Resistance: 20mΩ max.
 Dielectric Withstanding Voltage: 500V AC/1 min.
 Insulation Resistance: 1000 MΩ min.

Physical

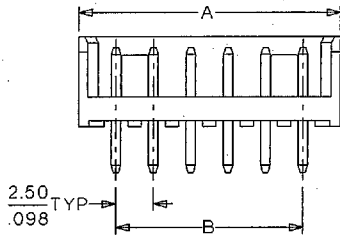
Housing: PBTP, UL 94V-0
 Contact: Brass
 Plating: Tin
 Temperature: -40 to +105°C

molex 2.50mm (.098") Pitch Header

53291



PCB LAYOUT: COMPONENT SIDE
 RECOMMENDED PCB THICKNESS: 1.60 ± 0.10mm (0.63 ± .004")



ORDERING INFORMATION AND DIMENSIONS

Circuits	Order No.	Dimension	
		A	B
3	53291-0320	10.00 (.393)	5.00 (.196)
4	53291-0420	12.50 (.492)	7.50 (.295)
5	53291-0520	15.00 (.590)	10.00 (.393)
6	53291-0620	17.50 (.688)	12.50 (.492)
7	53291-0720	20.00 (.787)	15.00 (.590)
8	53291-0820	22.50 (.865)	17.50 (.688)
9	53291-0920	25.00 (.984)	20.00 (.787)
10	53291-1020	27.50 (1.082)	22.50 (.865)
11	53291-1120	30.00 (1.181)	25.00 (.984)
12	53291-1220	32.50 (1.279)	27.50 (1.070)
13	53291-1320	35.00 (1.377)	30.00 (1.181)
14	53291-1420	37.50 (1.476)	32.50 (1.279)
15	53291-1520	40.00 (1.574)	35.00 (1.377)