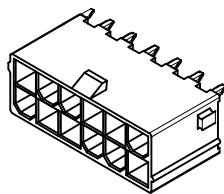


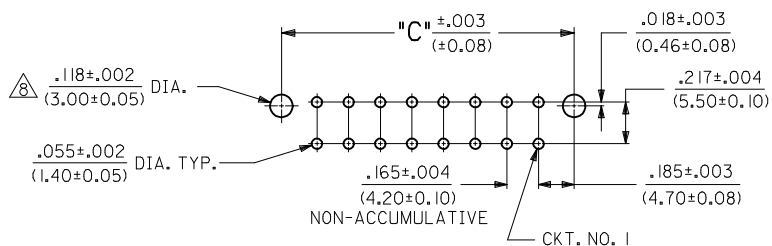
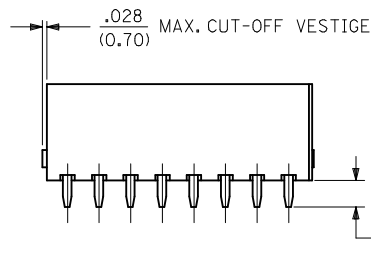
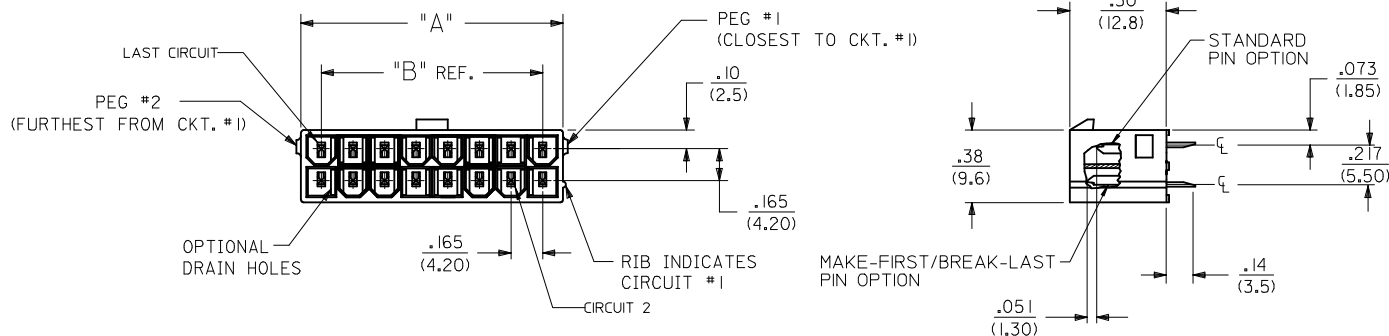
	13	12	11	
	CIRCUIT SIZE	DIM. "A"	DIM. "B"	DIM. "C"
J	2	.21 (5.4)	—	.370 (9.40)
	4	.38 (9.6)	.17 (4.2)	.535 (13.60)
	6	.54 (13.8)	.33 (8.4)	.701 (17.80)
I	8	.71 (18.0)	.50 (12.6)	.866 (22.00)
	10	.87 (22.2)	.66 (16.8)	1.031 (26.20)
	12	1.04 (26.4)	.83 (21.0)	1.197 (30.40)
H	14	1.20 (30.6)	.99 (25.2)	1.362 (34.60)
	16	1.37 (34.8)	1.16 (29.4)	1.528 (38.80)
	18	1.54 (39.0)	1.32 (33.6)	1.693 (43.00)
G	20	1.70 (43.2)	1.49 (37.8)	1.858 (47.20)
	22	1.87 (47.4)	1.65 (42.0)	2.024 (51.40)
	24	2.03 (51.6)	1.82 (46.2)	2.189 (55.60)



12 CKT SHOWN

NOTES:

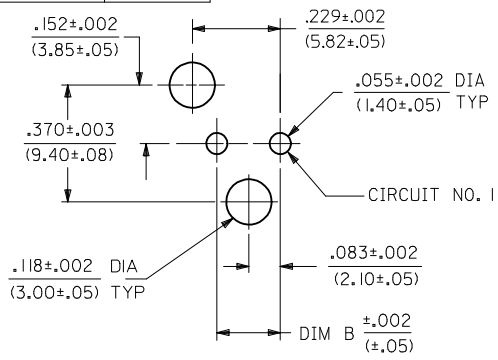
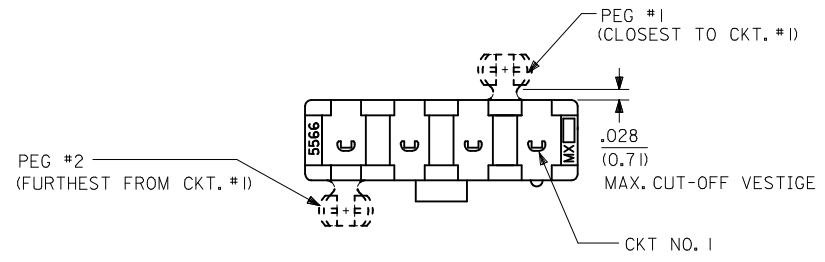
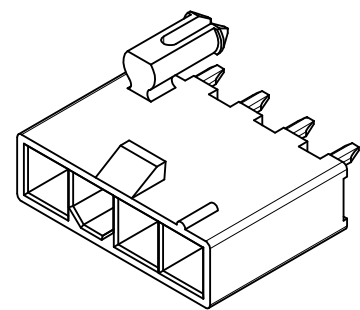
- MATERIALS:
HOUSING MATERIAL AND OPTIONS: SEE CHART
TERMINALS: BRASS
- TERMINAL PLATING:
A = .000035/(0.00089) MIN. REFLOWED MATTE TIN OVER
.000020/(0.00051) MIN. COPPER OVERALL (PREPLATE)
(FINISH IS BRIGHT IN APPEARANCE, THICKNESS AS
APPLIED PRIOR TO REFLOW)
B = .000030/(0.00076) MIN. SELECT GOLD AND
.000100/(0.00254) MIN. MATTE TIN OVER
.000050/(0.00127) MIN. NICKEL OVERALL
C = .000100/(0.00254) MIN. BRIGHT TIN OVER
.000050/(0.00127) MIN. NICKEL OVERALL
D = .000100/(0.00254) MIN. MATTE TIN OVER
.000050/(0.00127) MIN. NICKEL OVERALL
- PRODUCT SPECIFICATION: PS-5556-001
- PACKAGING: SEE CHART.
- PART MATES WITH MINI-FIT JR. RECEPTACLE #5557.
- PARTS ARE NOT DESIGNED FOR CURRENT SHARING.
CONNECTOR ASSEMBLIES ARE NOT DESIGNED TO BE MATED
OR UNMATED WHILE CIRCUITS ARE LIVE.
- LOCATION OF .118±.002/(3.00±0.05) DIAMETER HOLES ON
P.C. BOARD IS FOR OPTIONAL PEGS.
- PART CONFORMS TO CLASS "B" REQUIREMENTS OF COSMETIC
SPECIFICATION PS-45499-002 EXCEPT IN AREA OF PEG CUT-OFF.
- 5 CIRCUIT PARTS HAVE PEG DESIGN B. ALL OTHER CIRCUIT SIZES HAVE
PEG DESIGN A.



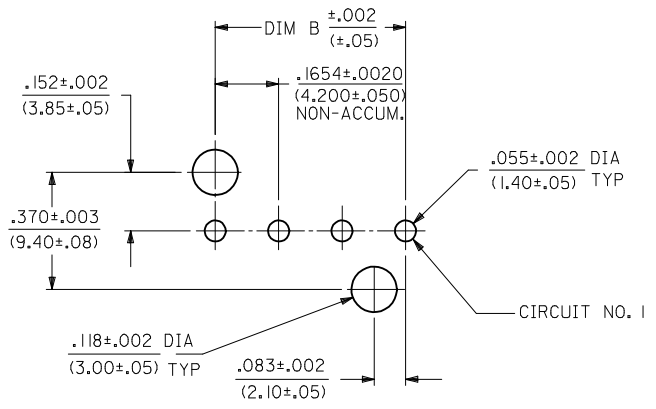
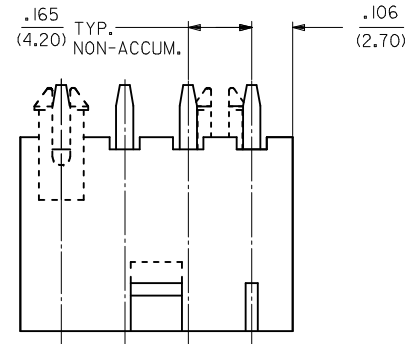
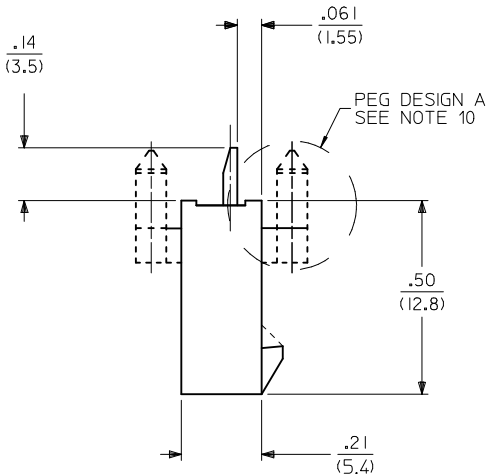
ADD 0030 TO 0032 EC NO: UCP2018-0384 DRAWINGS CHKD: APPR:FSMITH	2017/09/13 2017/09/25	DESCRIPTION	QUALITY SYMBOLS	GENERAL TOLERANCES (UNLESS SPECIFIED)		DIMENSION STYLE		SCALE	DESIGN UNITS	THIRD ANGLE PROJECTION
				IN/MM		DRAWN BY	DATE	TITLE	2:1	METRIC
D20	REV	DESCRIPTION	QUALITY SYMBOLS	4 PLACES	± .---	AFG	1995/07/19	2-24 CKT VERT HDR ASSY W/PEGS REMOVED OPTION MINI-FIT JR		
				3 PLACES	± .---	CHECKED BY	DATE			
				2 PLACES	± 0.38	RJF	1995/07/19	molex		
				1 PLACE	± 0.50	APPROVED BY	DATE			
				0 PLACE	±	FSMITH	2010/03/08	DOCUMENT NO. SDA-43588-**** SHEET NO. 1 OF 4		
				ANGULAR ±1/2°		SEE SHEET 3				
DRAFT WHERE APPLICABLE MUST REMAIN WITHIN DIMENSIONS				SIZE		THIS DRAWING CONTAINS INFORMATION THAT IS PROPRIETARY TO MOLEX INCORPORATED AND SHOULD NOT BE USED WITHOUT WRITTEN PERMISSION				

SEE SHEET 2 FOR SINGLE ROW PRODUCT

CKT SIZE	DIM A	DIM B
2	.378 (9.60)	.165 (4.20)
4	.709 (18.00)	.496 (12.60)
5	.874 (22.20)	.661 (16.80)
6	1.039 (26.40)	.827 (21.00)
7	1.205 (30.60)	.992 (25.20)
8	1.370 (34.80)	1.157 (29.40)
9	1.535 (39.00)	1.323 (33.60)
10	1.701 (43.20)	1.488 (37.80)
11	1.866 (47.40)	1.654 (42.00)
12	2.031 (51.60)	1.819 (46.20)



RECOMMENDED HOLE LAYOUT FOR
.070/(1.78) MAX. THICK P. C. BOARD
VIEWED FROM COMPONENT SIDE
FOR 2 CIRCUIT SINGLE ROW HEADER
(SEE NOTE 8)



RECOMMENDED HOLE LAYOUT FOR
.070/(1.78) MAX. THICK P. C. BOARD
VIEWED FROM COMPONENT SIDE
FOR 4 TO 6 CIRCUIT SINGLE ROW HEADER
(SEE NOTE 8)

SEE SHEET 1 FOR DUAL ROW PRODUCT

SEE SHEET 1 EC NO: UCP2018-0384 DRAWINGS: 2017/09/13 CHKD: 2017/09/25 APPR: FSMITH REV:	QUALITY SYMBOLS	GENERAL TOLERANCES (UNLESS SPECIFIED)	DIMENSION STYLE	SCALE	DESIGN UNITS	THIRD ANGLE PROJECTION
	▽=0	mm INCH	IN/MM	2:1	METRIC	
	▽=0	4 PLACES ± --- ± ---	DRAWN BY DATE	TITLE		
	▽=0	3 PLACES ± --- ± .015	AFG 1995/07/19	2-24 CKT VERT HDR ASSY W/PEGS REMOVED OPTION MINI-FIT JR		
▽=0	2 PLACES ± 0.38 ± .020	CHECKED BY DATE	DOCUMENT NO.			SHEET NO.
	1 PLACE ± .50 ± ---	RJF 1995/07/19	SDA-43588-****			2 OF 4
	0 PLACE ± ±	APPROVED BY DATE	MATERIAL NO.			
		FSMITH 2010/03/08	SEE SHEET 3			
		ANGULAR ±1/2°	THIS DRAWING CONTAINS INFORMATION THAT IS PROPRIETARY TO MOLEX INCORPORATED AND SHOULD NOT BE USED WITHOUT WRITTEN PERMISSION			

