

20 AMP DARLINGTON - NPN

TYPE NO. **CBSE106**

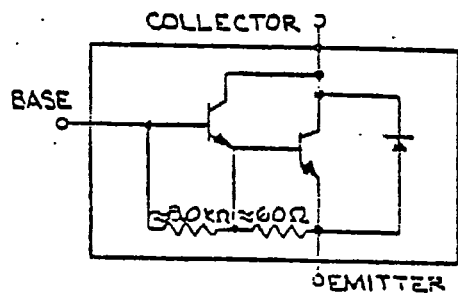
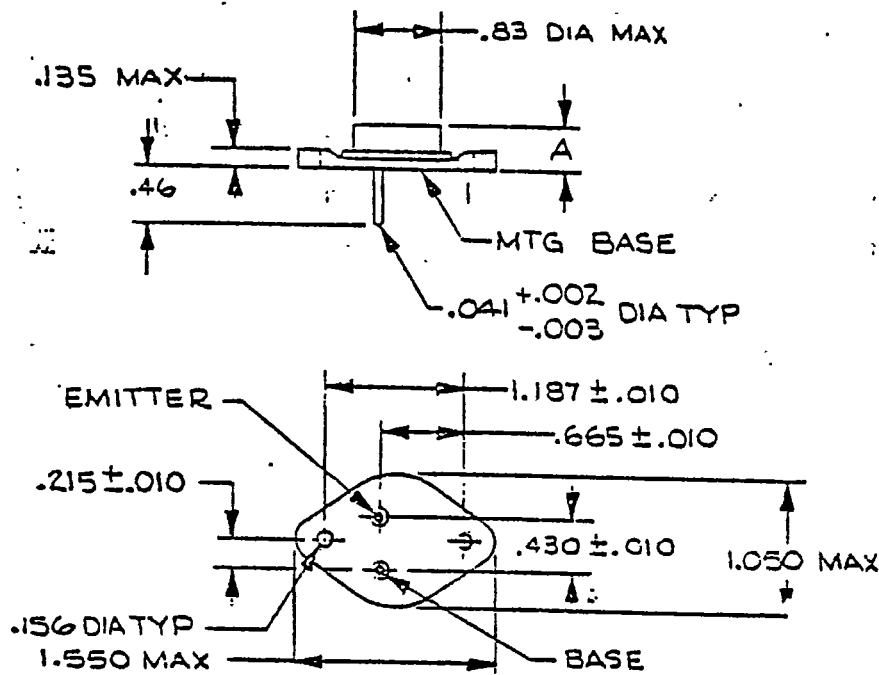
GROUP A AND/OR PERFORMANCE CHARACTERISTICS

NPN

NO.	SYMBOL	CONDITIONS	MIN.	MAX.	UNITS
1		SUB I :			
2	750-2071	VISUAL - MECHANICAL INSPECTION (REF. FIG. 1 PAGE			
3					
4		SUB II			
5	V-CE0	IC = 100 mA	100		V
6	T-CEX	V-CE = 100 V VEB = 1.5 V		550	µA
7	I-CE0	V-CE = 50 V		1.1	mA
8	T-EB0	V-EB = 5.0 V	0.4	2.2	mA
9					
10		SUB III			
11	h-FE	IC = 10 A V-CE = 3.0 V	675	18000	
12	V-CE(S)	IC = 10 A IB = 40 mA		2.0	V
13	V-BE(S)	IC = 20 A IB = 200 mA		4.0	V
14	V-BE (ON)	IC = 10 A V-CE = 3.0 V		2.8	V
15	V-CE(S)	IC = 20 A IB = 200 mA		3.0	V
16		SUB IV			
17	h-fe	IC = 10 A V-CE = 3.0 V f = 1.0 KHz	270		
18	Cob	V-CE = 10 V f = 100 KHz		400	PF
19	f _t	V-CE = 3.0 V IC = 10 A f = 1.0 MHz	4.0	200	MHz
20					
21		SUB V			
22	T-CEX	V-CE = 100 V VEB = 1.5 V Tc = 150°C		5.5	mA
23	h-FE	V-CE = 3.0 V IC = 4.0 A Tc = -55°C	375		
24					
25		GROUP B - ADDITIONAL Req'ts			
26	I _s /b	V-CE = 25 V	7.0		A
27	I _s /b	V-CE = 40 V	2.5		A
28	I _s /b	V-CE = 100 V	100		mA
29	I _s /b	V-CE = 8.0 V	20		A
30					
31					
32					

TYPE NO. **CBSE106**

ADDITIONAL REQUIREMENTS



GRAPHIC SYMBOL

NOTES: The collector is electrically connected to the case.

FIGURE 1 - OUTLINE DIMENSIONS AND GRAPHIC SYMBOOL