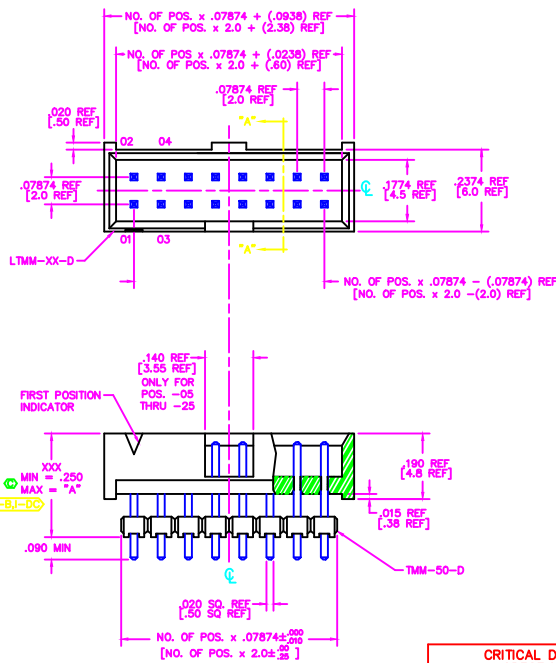


REVISION S

DIMENSIONS ARE IN INCHES		UNLESS OTHERWISE NOTED		TOLERANCES ARE:		TITLE:	DWG NO:
ONE PLACE DECIMALS: ± .1	TWO PLACE DECIMALS: ± .01	THREE PLACE DECIMALS: ± .005	FOUR PLACE DECIMALS: ± .0020	ANGLES ± 1°		ZLTTM ASSEMBLY	ZLTTM-1XX-XX-XX-D-XXX-XX SHEET 1 OF 1

DO NOT SCALE FROM THIS PRINT



**ZLTTM-1XX-XX-XX-D-XXX-XX**

NO. OF POSITIONS  
03 THRU 25

POLARIZED OPTION  
XX = PIN NO. TO BE OMITTED

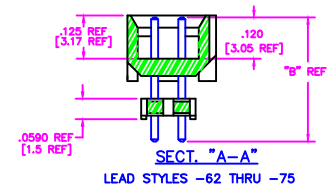
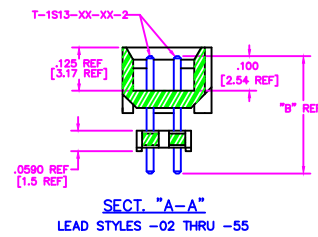
TERMINAL STYLE  
LEAD STYLES -02 THRU -55:  
.100 POST HEIGHT, LEAD STYLES  
-82 THRU -75: .120 POST HEIGHT  
(SEE TABLE 1)

BODY HEIGHT  
-XXX  
MIN = .250  
MAX = "A" (SEE TABLE 1)

BOW SPECIFICATION  
-D: DOUBLE

PLATING SPECIFICATIONS

- G: 20µ" GOLD IN CONTACT AREA, 3µ" GOLD ON TAIL
- T: MATTE TIN CONTACT AND TAIL
- S: 30µ" SELECTIVE GOLD IN CONTACT AREA, MATTE TIN ON TAIL
- H: 30µ" GOLD IN CONTACT AREA, 3µ" GOLD ON TAIL
- TM: MATTE TIN CONTACT AND TAIL
- LM: 10µ" SELECTIVE GOLD IN CONTACT AREA, MATTE TIN ON TAIL
- FM: 5µ" SELECTIVE GOLD IN CONTACT AREA, MATTE TIN ON TAIL
- SM: 30µ" SELECTIVE GOLD IN CONTACT AREA, MATTE TIN ON TAIL
- L: 10µ" SELECTIVE GOLD IN CONTACT AREA, MATTE TIN ON TAIL
- F: 3µ" SELECTIVE GOLD IN CONTACT AREA, MATTE TIN ON TAIL



ASSEMBLY OPERATION	IN-PROCESS INSPECTION
MOUNT BODY	C1

- NOTES:
1. MAX PIN ROTATION IN BODY TO BE 2°.
  2. PUSHOUT FORCE TO BE 1 lb. MIN.
  3. (C) REPRESENTS CRITICAL DIMENSION
  4. ALL DIMS APPEARING IN [ ] ARE IN MILLIMETERS.
  5. INSULATOR MATERIAL: LCP, UL 94 VO

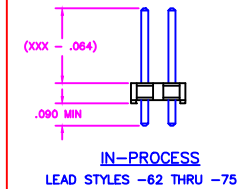
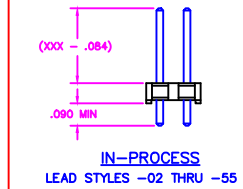


TABLE 1

LEAD STYLE	TERMINAL	"A"	"B"	LEAD STYLE	TERMINAL	"A"	"B"
-02	T-1S13-02-XX-2	.312 [7.92]	.377 [9.58]	-62	T-1S13-05-XX-2	.312 [7.92]	.397 [10.08]
-03	T-1S13-03-XX-2	.470 [11.94]	.535 [13.59]	-63	T-1S13-06-XX-2	.470 [11.94]	.555 [14.10]
-05	T-1S13-05-XX-2	.332 [8.43]	.397 [10.08]	-65	T-1S13-19-XX-2	.328 [8.33]	.413 [10.49]
-06	T-1S13-06-XX-2	.490 [12.45]	.555 [14.1]	-66	T-1S13-09-XX-2	.509 [12.93]	.594 [15.09]
-55	T-1S13-20-XX-2	.258 [6.55]	.323 [8.2]	-69	T-1S13-14-XX-2	.529 [13.44]	.614 [15.60]
-09	T-1S13-09-XX-2	.529 [13.4]	.594 [15.1]	-70	T-1S13-17-XX-2	.608 [15.44]	.693 [17.60]
-10	T-1S13-10-XX-2	.608 [15.4]	.673 [17.1]	-71	T-1S13-12-XX-2	.745 [18.92]	.830 [21.01]

PROPRIETARY NOTE