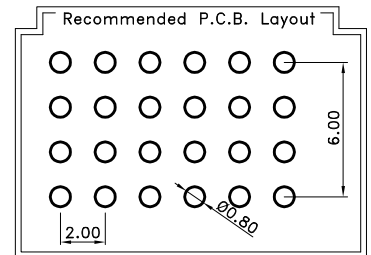
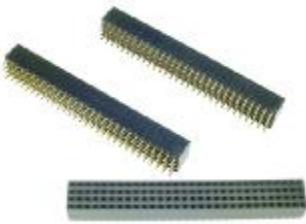
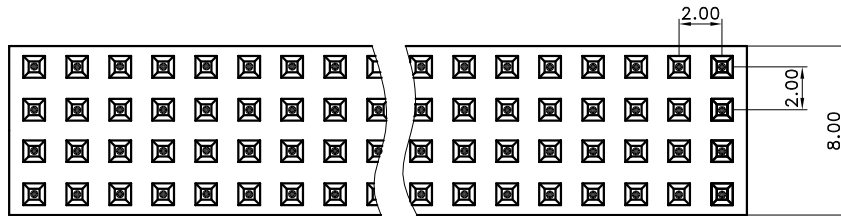
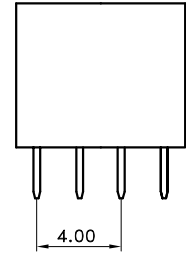
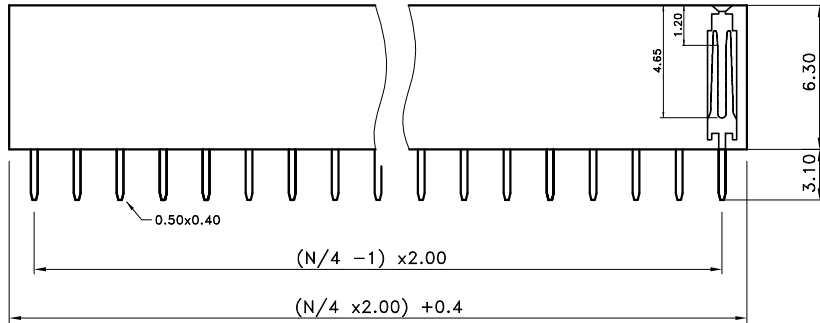


THIS DRAWING IS THE PROPERTY OF KONTEK COMATEL S.p.a. AND IT CAN NOT BE USED, REPRODUCED AND OR LOANED TO THIRD PARTIES WITHOUT THE WRITTEN PERMISSION OF KONTEK COMATEL S.p.a.



QUESTO DISEGNO E' DI PROPRIETA' DELLA KONTEK COMATEL S.p.a. E NON PUO' ESSERE USATO, E/O CEDUTO A TERZI SENZA IL PERMESSO SCRITTO DELLA KONTEK COMATEL S.p.a.

B	29/12/05	3.10 era 2.40				 UNIT:mm <i>general tolerance</i> <i>X ±0.25mm</i> <i>XX ±0.2mm</i>	
A	20/12/04	UPDATING					
INDEX	DATE	EDIT					
Material			Pin: Copper alloy		Insulator: Nylon 6T		
Platings			Y= 0: Gold plated 0.25µm	Y= 1: Gold flash	Y= 4: Tin plated	Y= 7: Selective Gold 0.25µm	
Protection			N= XX: Number of contacs per row 04÷30				Date 06-04-04
			Denomination		Code <b>4779731CXX4Y0</b>		
			FEMALE HEADER, PLASTIC HEIGHT 6.3mm		File: 4779731CXX4Y0		
			4 ROW, PITCH 2.00mm.		index           B		
					Contr. Chiappini R.		
					Design. Pandiscia M.		