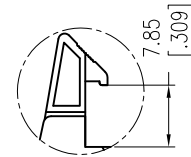
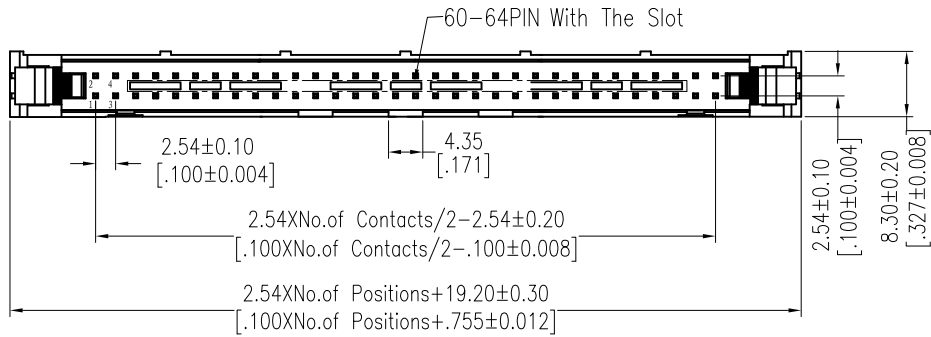
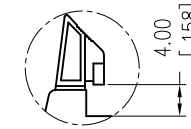


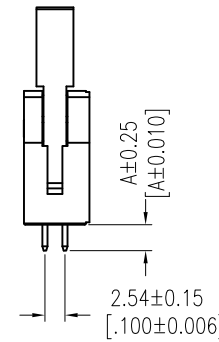
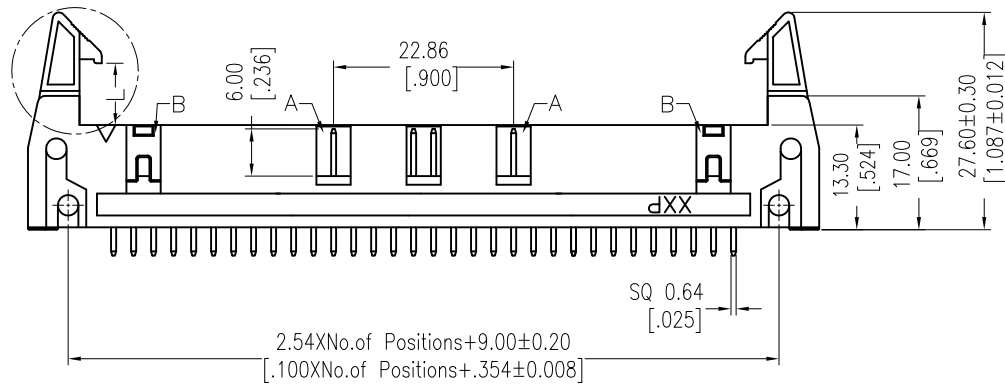
Lat-Con, Series 050, 180° Male Header, different Latch Options, grey



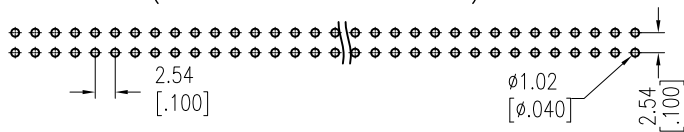
Long Latch



Short Latch



Recommended P.C.B Layout(Top Side)
(PCB BOARD TOLERANCE±0.05)



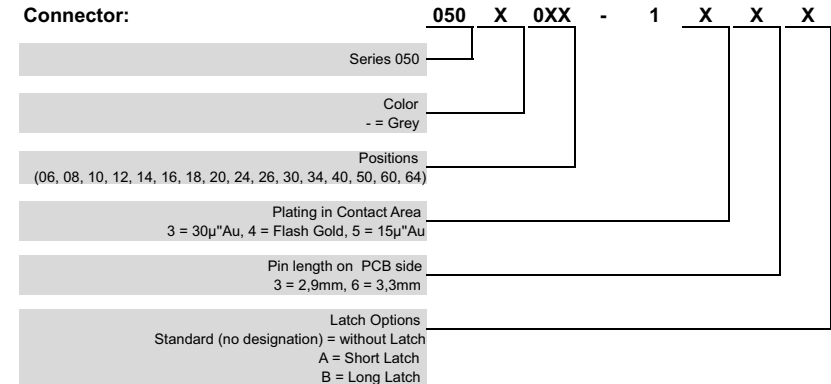
NOTES:
 Current Rating: 3,0 AMP
 Contact Resistance: 20mΩ max.
 Withstand Voltage: 1000V AC/DC
 Insulation Resistance: 1000MΩ min.
 Operation Temperature: -40°C to +105°C

Contact Material: Copper Alloy
 Contact Plating: Au Sel./Sn over Ni
 Insulator Material: PA9T GF (UL94 V-0)

| OPERATION | |
|-----------|-------|
| X.X | ±0.40 |
| X.XX | ±0.25 |
| X.XXX | ±0.15 |
| Angle | ± 3° |
| DIM | TOL |

| Positions | Feature A | Feature B |
|-----------|-----------|-----------|
| 6 - 18 | | |
| 20 - 58 | | x |
| 60 - 64 | x | x |

Connector:



| REV | DATE | NOTE | NAME |
|-----|------------|-----------------|------|
| 3 | 10.11.2022 | Notes clarified | PER |
| 2 | 25.01.2022 | Revised | PER |
| 1 | 22.04.2021 | issued | JAL |