

I.D.C. D-SUB ORDERING CODE

PDI- 15 S S - I B - H

NUMBER OF PINS

=09
=15
=25
=37

GENDER

MALE =S
FEMALE =R

MATING FACE

4-40 THREADED RIVET =BLANK
HOLE =H
4-40 THREADED RIVET & JACK SCREW =R

GOLD PLATING (XX IS GOLD IN MICRO INCHES)

=GXX

GOLD FLASH (STANDARD)

=BLANK

6

5

4

3

2

1

MATERIAL AND FINISH

Insulator: PBT and glass fiber reinforced, UL 94V-0 rated, color blue.

Contacts: Phosphor Bronze, Selective Gold plating, Tin on tails over Nickel.

Shell: Steel, Tin plated.

ELECTRICAL SPECIFICATIONS:

Rated current: 3A max.

Ratec voltage: 250VAC max.

Insulation resistance: 3000 Mohm min. @ 500VDC

Dielectric withstanding voltage: 1000VAC for 1 minute

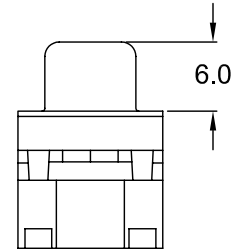
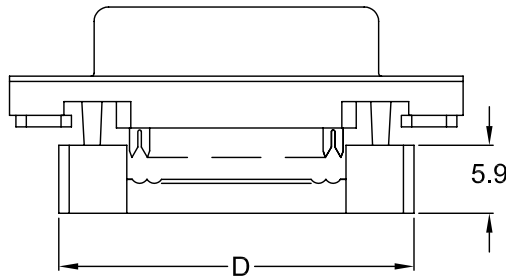
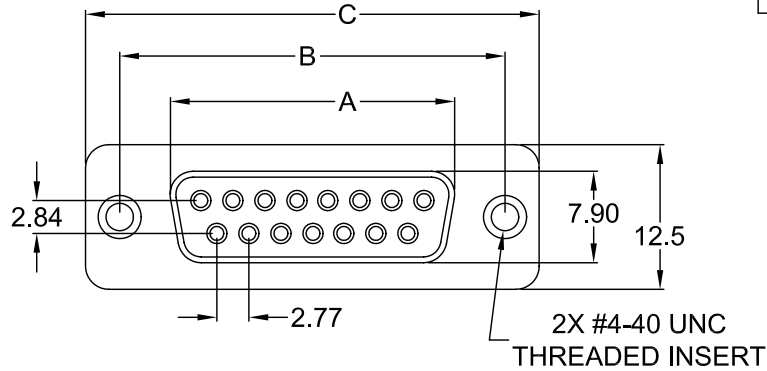
Contact resistance: 15 mohm max.

ENVIRONMENTAL:

Operating temperature: -55°C to +105°C

NOTE: Replace first XX in part number with number of positions.

POSITION	A	B	C	D
09	16.3	25.0	30.8	22.4
15	24.6	33.3	39.2	30.8
25	38.3	47.1	53.1	44.5
37	54.8	63.5	69.4	61.4



-XX: SEE ORDERING CODE FOR OPTIONS

TOLERANCE UNLESS OTHERWISE SPECIFIED	
X	± 1
X.X	± 0.4
X.XX	± 0.20

Power Dynamics, Inc.

Phone: 973 560-0019 Whippany, New Jersey Fax: 973 560-0076

PART: IDC FEMALE D-SUB
WITH STRAIN RELIEF

DRAWN BY	DF	DATE:	2/10/06
CHECK BY		DATE:	
APPR BY		DATE:	

PART #: PDI-XXRS-IB-XX		SHEET 1 of 1
SIZE: A	ALL DIMENSIONS FOR REFERENCE ONLY DIMENSIONS ARE IN MILLIMETERS	REV:
SCALE: NTS		

D

D

C

C

B

B

A

A

6

5

4

3

2

1

REVISIONS	CHNG	CHK	APPR
	CHANGE		
	REV	DATE	

6

5

4

3

2

1

MATERIAL AND FINISH

Insulator: PBT and glass fiber reinforced, UL 94V-0 rated, color blue.

Contacts: Brass, Gold plating over Nickel.

Shell: Steel, Tin plated.

Operating temperature: -55°C to +105°C

ELECTRICAL SPECIFICATIONS:

Rated current: 1A

Rated voltage: 125V

Insulation resistance: 1000 Mohm min. @ 500VDC

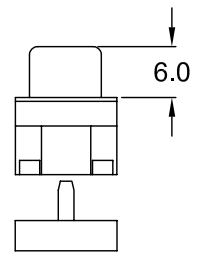
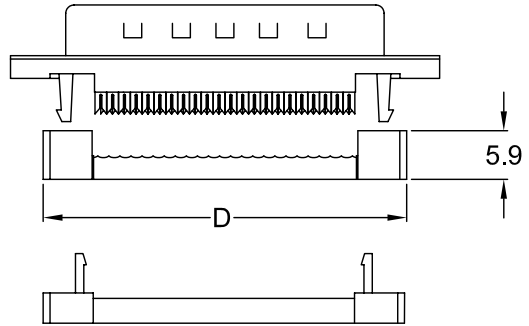
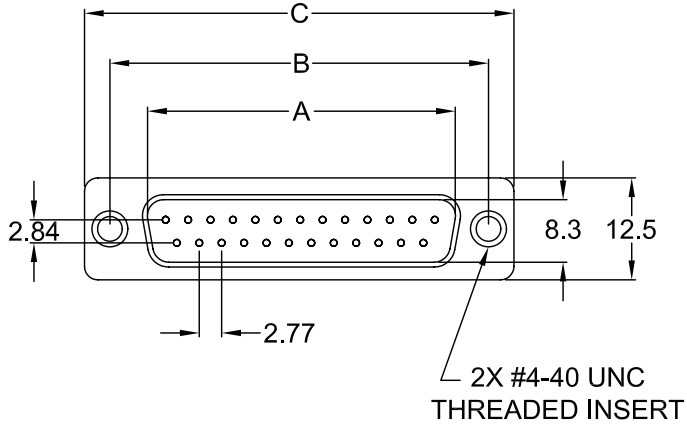
Dielectric withstanding voltage: 400VAC for 1 minute

Contact Resistance: 15 mohm

NOTE:

Replace first XX in part number with number of positions.

POSITION	A	B	C	D
09	16.9	25.0	30.8	22.4
15	25.2	33.3	39.2	30.8
25	38.9	47.1	53.1	44.5
37	55.4	63.5	69.4	61.4



-XX: SEE ORDERING CODE FOR OPTIONS

TOLERANCE UNLESS OTHERWISE SPECIFIED	
X	± 1
X.X	± 0.4
X.XX	± 0.20

DRAWN BY	DF	DATE:	2/10/06
CHECK BY		DATE:	
APPR BY		DATE:	

Power Dynamics, Inc.
 Phone: 973 560-0019 Whippany, New Jersey Fax: 973 560-0076

PART: IDC MALE D-SUB
 WITH STRAIN RELIEF

PART #: **PDI-XXSS-IB-XX**

SIZE: A
 SCALE: NTS

ALL DIMENSIONS FOR REFERENCE ONLY
 DIMENSIONS ARE IN MILLIMETERS

SHEET 1 of 1
 REV:

D

C

B

A

D

C

B

A

6

5

4

3

2

1

REV	DATE	CHANGE	CHKG	CHKD	APPR