

Fig. 1

- Elevated socket strips are available in 5 different heights.
 - 316...006 uses pin # 0153-1
 - 316...003 uses pin # 0153-2
 - 316...007 uses pin # 0153-3
 - 316...008 uses pin # 0153-4
 - 316...001 uses pin # 0153-5
- Hi-Rel, 4-finger BeCu #30 clip rated at 3 amps. See page 208 for details.

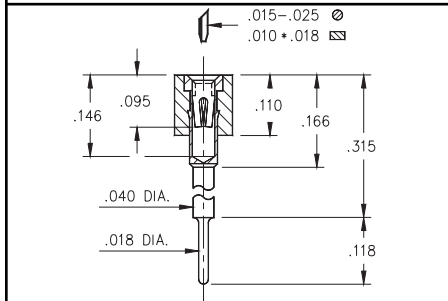
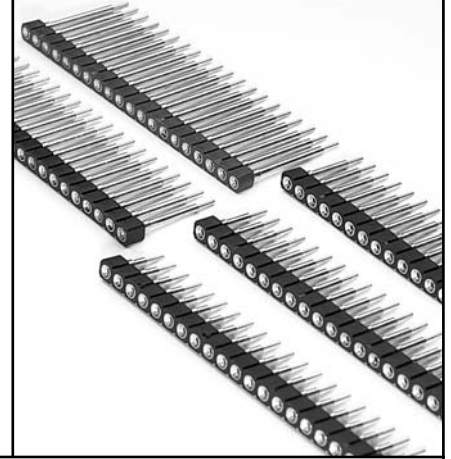


Fig. 2

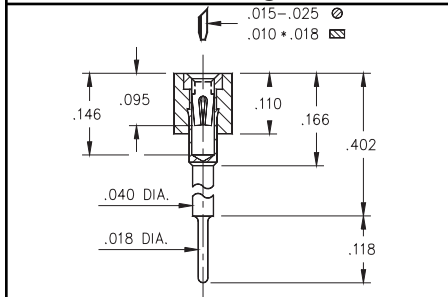


Fig. 3

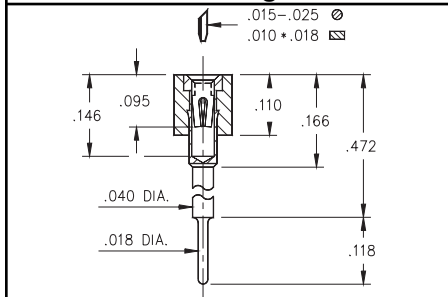


Fig. 4

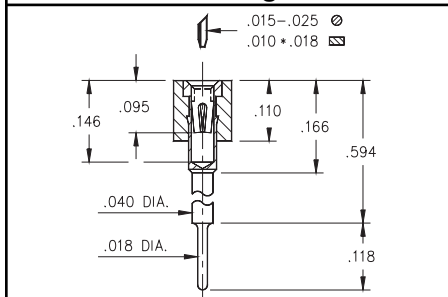


Fig. 5

Ordering Information

Fig. 1	Series 316...006	Standoff Height = .236
	316-XX-1__-41-006000	Specify # of pins → 01-64
Fig. 2	Series 316...003	Standoff Height = .315
	316-XX-1__-41-003000	Specify # of pins → 01-64
Fig. 3	Series 316...007	Standoff Height = .402
	316-XX-1__-41-007000	Specify # of pins → 01-64
Fig. 4	Series 316...008	Standoff Height = .472
	316-XX-1__-41-008000	Specify # of pins → 01-64
Fig. 5	Series 316...001	Standoff Height = .594
	316-XX-1__-41-001000	Specify # of pins → 01-64

XX=Plating Code
See Below



For RoHS compliance, select \diamond plating code.
For the all gold option (XX=13) also change part number from 316-XX-1XX-41-00XQ00 to 316-13-1XX-41-00X100

SPECIFY PLATING CODE XX=	13 \diamond	93	43 \diamond
Sleeve (Pin)	10 μ " Au	200 μ " Sn/Pb	200 μ " Sn
Contact (Clip)	30 μ " Au	30 μ " Au	30 μ " Au