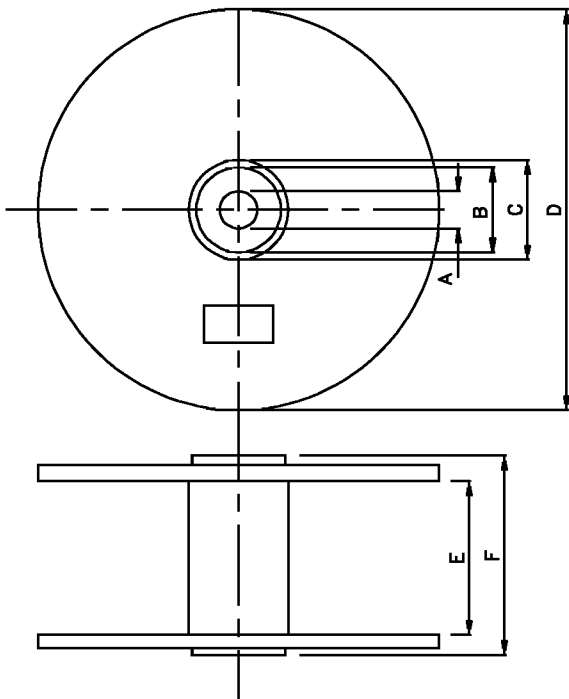


L-132XBR-7.7/1-TNR2.54

Part No.	Dimension
L-132XBR-7.7/1HD -TNR2.54	<p>Technical drawing showing dimensions for L-132XBR-7.7/1 variants (HD, ID, GD, YD). Dimensions are provided in millimeters (mm) and inches (in). Key dimensions include:</p> <ul style="list-style-type: none"> <li>Head diameters: <math>\phi 3.8(0.15)</math>, <math>\phi 3.5(.138)</math>, <math>\phi 3(.118)</math>, <math>\phi 5(.197)</math></li> <li>Head heights: <math>5.2(.205)</math>, <math>1.1(.043)</math>, <math>2.0 \text{ MAX.}</math></li> <li>Body diameters: <math>\phi 4(.157)</math>, <math>\phi 6(.236)</math></li> <li>Body lengths: <math>12.7 \pm 1(0.5)</math>, <math>12.7 \pm 0.3</math>, <math>2.54(0.1)</math></li> <li>Reel dimensions: <math>11(.433) \text{ MAX.}</math>, <math>18 \pm 0.5(.709)</math>, <math>15 \text{ MAX.}(.59)</math>, <math>18(.709) \pm 0.5</math></li> </ul>
L-132XBR-7.7/1ID -TNR2.54	
L-132XBR-7.7/1GD -TNR2.54	
L-132XBR-7.7/1YD -TNR2.54	

**REEL DIMENSIONS**



DIMENSIONS PER MILLIMETERS (INCHES)	
A	$\phi 30(1.18)$
B	$\phi 67(2.64)$
C	$\phi 97(3.91)$
D	$\phi 340(13.39)$
E	40(1.57)
F	50(1.96)

**NOTES :**

1. All dimensions are in millimeters (inches)
2. Tolerance is  $\pm 0.25\text{mm}(0.01")$  unless otherwise noted.