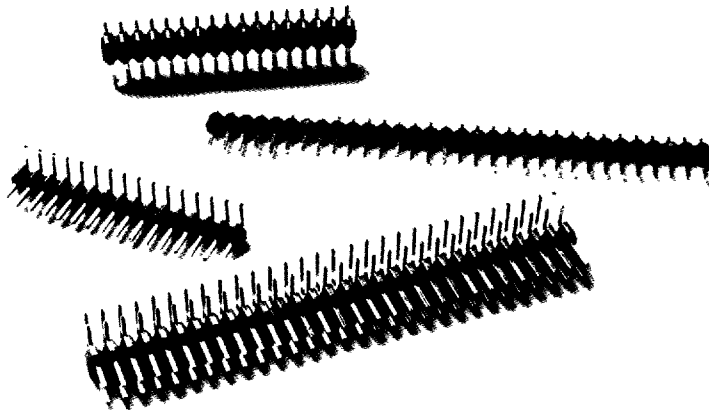


Amphenol® unprotected headers — 800/801 series



description

Amphenol unprotected male headers are soldered to PC boards, logic panels or backplanes. These headers mate with a wide variety of female sockets: series 812, 216 or similar connectors. They provide a low-cost interconnection with quick disconnect/reconnect capability. Both single and double row configurations are easily breakable to desired number of pins. Stand-offs on the bottom of the insulators facilitate PC board cleaning after installation.

Double-row, straight and right-angle headers feature .025" square posts for soldering onto .062" PC boards. Single-row, straight and right-angle headers with .025" square posts in .100" tail length.

order information

842 - 8XX - XXX - OXX

800-272	1 × 36 str.	05 - 15μ gold/tin duplex
800-560	2 × 36 str.	10 - 30μ gold/tin duplex
800-840	1 × 36 r/a	15 - tin overall
801-056	2 × 36 r/a	


Blue type indicates standard, available product.

Single Row Headers .100" (2,54mm) center spacing

Double Row Headers .100" (2,54mm) × .100" (2,54mm) grid spacing

Consult local value added distributor or factory for cut version.

benefits

- Mates with IDC socket connectors
- Single and double row, straight or right angle
- Breakable to desired number of pins
- Square posts
- Designed for easy board cleaning after installation
- UL and CSA recognized 

characteristics

Physical

Contact spacing: Single row — .100" (2,54mm) center spacing. Double row — .100" × .100" grid (2,54 × 2,54)

Number of contacts: 36 contacts per row, both single and double rows

Contact material: Phosphor bronze

Contact plating: Gold over nickel in mating area, solder plated tails

Insulation material: Glass thermoplastic, glass-reinforced, UL flammability rating 94 V-O.

Electrical

Current rating: 1 amp

Dielectric withstanding voltage: 500 VAC for 60 seconds

Insulation Resistance: 5000 megohms (min)

Operating Temperature Range: -55° C to +130° C (-67° F to +266° F)

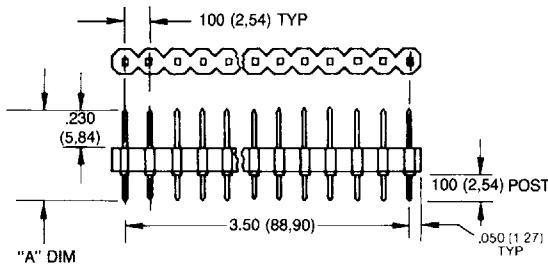
UL Recognized to 130° C

Amphenol® unprotected headers — 800/801 series

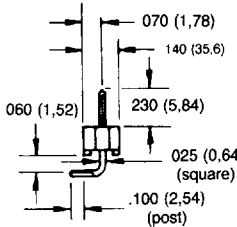
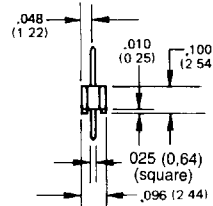
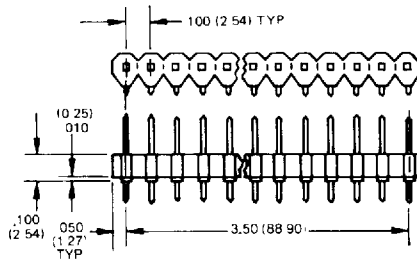
dimensions

single row headers .100" (2,54 mm) center spacing

Straight



Right Angle



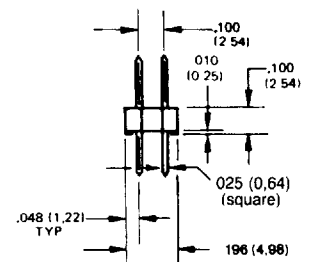
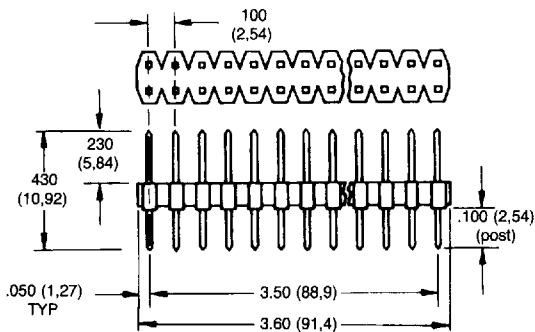
Dimensions are shown in inches and (mm).

Post lengths mate with PC Board.

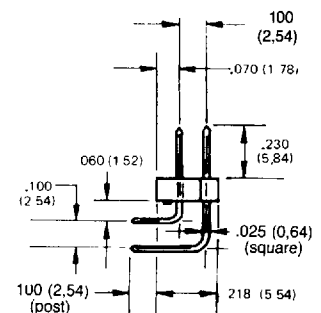
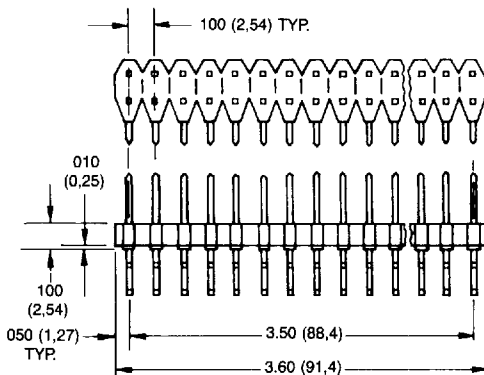
Dimension of .070" (1,78) on right angle headers is a clearance dimension for mating socket connector.

double row headers .100" (2,54 mm) x .100" (2,54 mm) grid spacing

Straight



Right Angle



.230" dimension on all header styles is pin length dimension which mates to socket connector.

Dimensions and characteristics subject to change without notice.