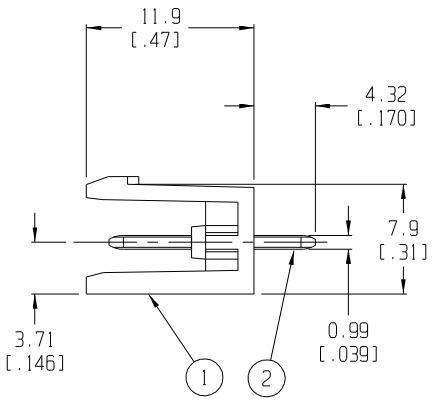
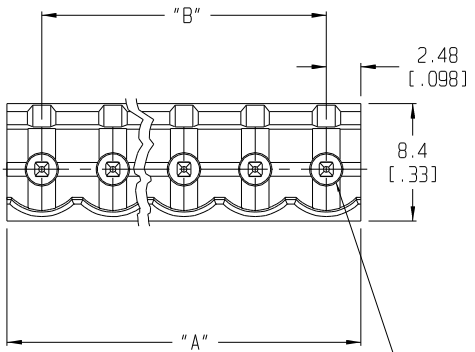
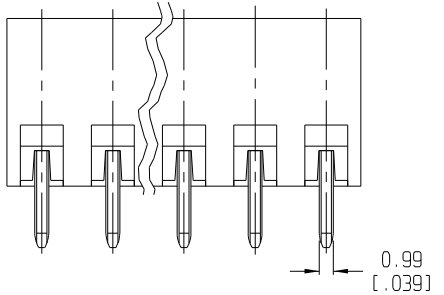


RECOMMENDED PLATED THRU HOLE PATTERN  
SCALE 2:1



"XX" CIRCUITS EQUALLY SPACED @ 5.08 (.200)



NOTES:

1. MATERIAL: SEE TABLE
2. FINISHES: SEE TABLE
3. PRODUCT SPECIFICATION: NOT REQUIRED
4. PACKAGING: NOT REQUIRED
5. MATES WITH: NONE
6. "XX" REFERS TO THE QUANTITY OF CIRCUIT POSITIONS.
7. REFER TO DWG SD-38120-003 FOR OPTIONAL IMPRINTING (-10AV AND -11AV)

NO. OF CIRC. "XX"	DIM. "A"	DIM. "B"	BLACK (STD.) MATERIAL NO.	BLACK (-G30 OPT.) MATERIAL NO.	GREEN MATERIAL NO.
02	10.03 [.395]	5.08 [.200]	39860-0402	39861-0402	39860-3402
03	15.11 [.595]	10.16 [.400]	39860-0403	39861-0403	39860-3403
04	20.19 [.795]	15.24 [.600]	39860-0404	39861-0404	39860-3404
05	25.27 [.995]	20.32 [.800]	39860-0405	39861-0405	39860-3405
06	30.35 [1.195]	25.40 [1.000]	39860-0406	39861-0406	39860-3406
07	35.43 [1.395]	30.48 [1.200]	39860-0407	39861-0407	39860-3407
08	40.51 [1.595]	35.56 [1.400]	39860-0408	39861-0408	39860-3408
09	45.59 [1.795]	40.64 [1.600]	39860-0409	39861-0409	39860-3409
10	50.67 [1.995]	45.72 [1.800]	39860-0410	39861-0410	39860-3410
11	55.75 [2.195]	50.80 [2.000]	39860-0411	39861-0411	39860-3411
12	60.83 [2.395]	55.88 [2.200]	39860-0412	39861-0412	39860-3412
13	65.91 [2.595]	60.96 [2.400]	39860-0413	39861-0413	39860-3413
14	70.99 [2.795]	66.04 [2.600]	39860-0414	39861-0414	39860-3414
15	76.07 [2.995]	71.12 [2.800]	39860-0415	39861-0415	39860-3415
16	81.15 [3.195]	76.20 [3.000]	39860-0416	39861-0416	39860-3416
17	86.23 [3.395]	81.28 [3.200]	39860-0417	39861-0417	39860-3417
18	91.31 [3.595]	86.36 [3.400]	39860-0418	39861-0418	39860-3418
19	96.39 [3.795]	91.44 [3.600]	39860-0419	39861-0419	39860-3419
20	101.47 [3.995]	96.52 [3.800]	39860-0420	39861-0420	39860-3420
21	106.55 [4.195]	101.60 [4.000]	39860-0421	39861-0421	39860-3421
22	111.63 [4.395]	106.68 [4.200]	39860-0422	39861-0422	39860-3422
23	116.71 [4.595]	111.76 [4.400]	39860-0423	39861-0423	39860-3423
24	121.79 [4.795]	116.84 [4.600]	39860-0424	39861-0424	39860-3424

ITEM	QTY.	DESCRIPTION	MATERIAL	FINISH
2	XX	HEADER PIN (-G30 OPTION)	BRASS	GOLD PLATE
		HEADER PIN	BRASS	TIN PLATE
1	1	INSULATOR	NYLON	SEE CHART

EC NO. ECN 3656 DRWN: CY 05-05-04 CHK: APPR:	QUALITY SYMBOLS: MAJOR = CRITICAL = SPC =	GENERAL TOLERANCES: (UNLESS SPECIFIED) mm      INCH		SCALE 3:1	DESIGN UNITS <input type="checkbox"/> mm <input checked="" type="checkbox"/> INCH	THIRD ANGLE PROJECTION	DIMENSIONS: <input checked="" type="checkbox"/> mm INCH <input type="checkbox"/> INCH mm <input type="checkbox"/> mm ONLY	SHT    REV
		4 PLACES      ±.0015 3 PLACES      ±.038      ±.005 2 PLACES      ±.13      ±.01 1 PLACE      ±.3		DRAWN BY & DATE R. KEMP      12-05-01	CHECKED BY & DATE P. WALTZ      12-06-01		TITLE: HEADER ST, ASSEMBLY (5.08 [.200] CENTERS)	
APPROVED BY & DATE L. ROTHHAUS      12-06-01		ANGLAR: ±2°		CAD FILENAME 8615XX		MATERIAL NO.      DRAWING NO.      SHEET NO. SEE CHART      SD-39860-008      1 OF 1		
DRAFT WHERE APPLICABLE MUST REMAIN WITHIN DIMENSIONS		THIS DRAWING CONTAINS INFORMATION THAT IS PROPRIETARY TO MOLEX INCORPORATED AND SHOULD NOT BE USED WITHOUT WRITTEN PERMISSION.						