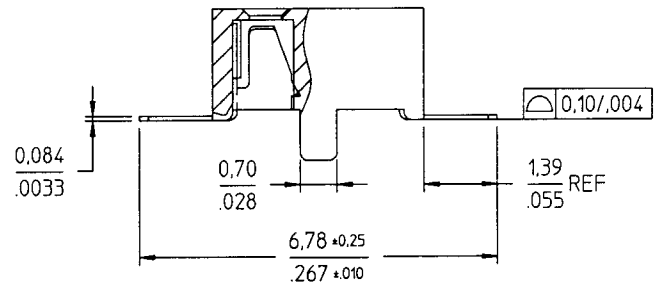
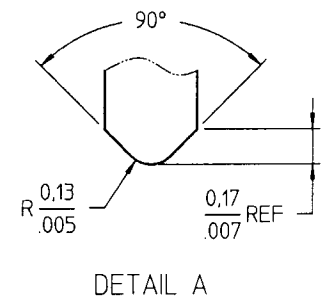
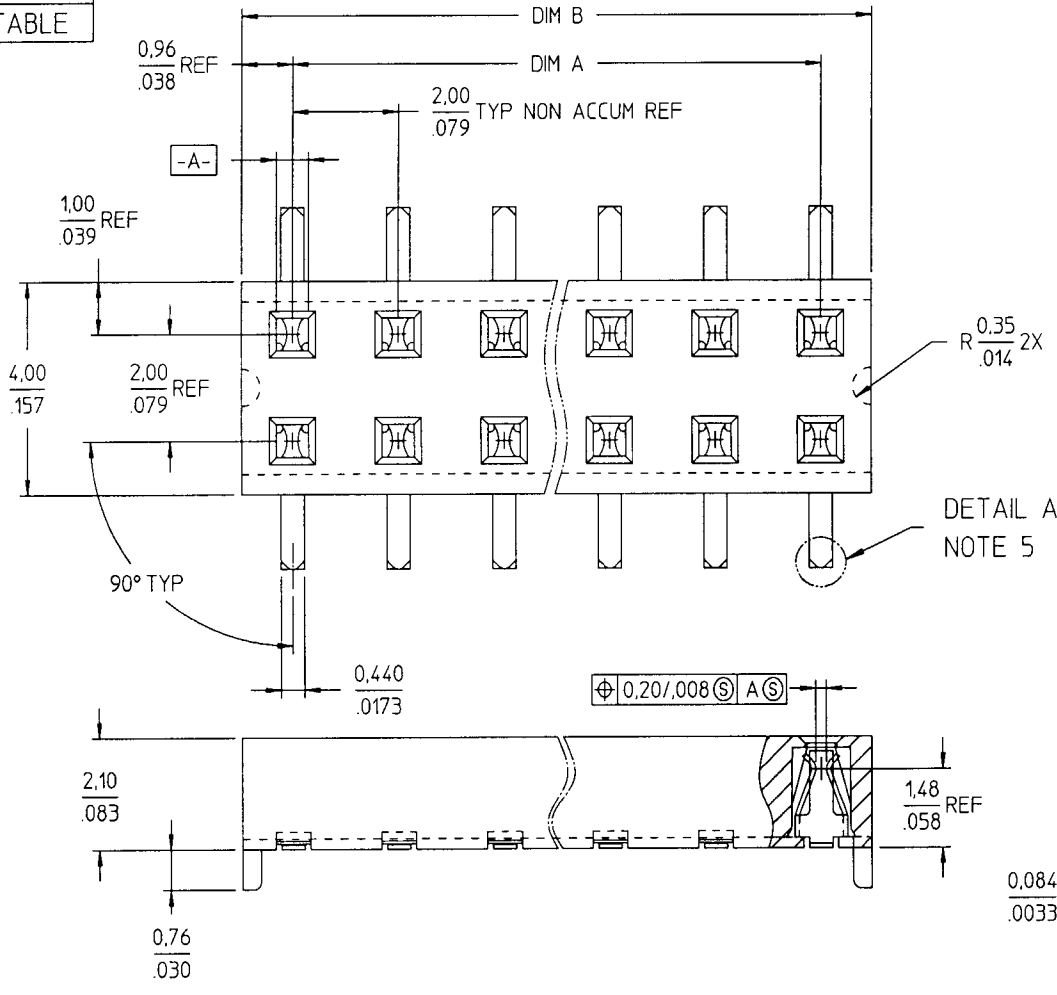


PRODUCT NO  
SEE TABLE

REV	DESCRIPTION	REVD BY	DATE
N	ECR S40316	BS LOW	20DEC94
P	ECR S60270	BS LOW	28OCT96
R	ECR V94400	BS LOW	01DEC99



CUSTOMER COPY

GEN. TOLERANCES X,X+0.3/XX+01 X,XX+0.13/XXX+005 X,XXX+0.051/XXXX+0020 ANGLES = ±2°	DO NOT SCALE DWG. MM INCH		
DRAWN	BS LOW	06 JAN 00	PRODUCT NO. 92429
CHECKED	<i>RJ</i>	06 JAN 00	SCALE
APPROVED	<i>John</i>	13 JAN 2000	SHT 1 OF 2

1 2 3 4

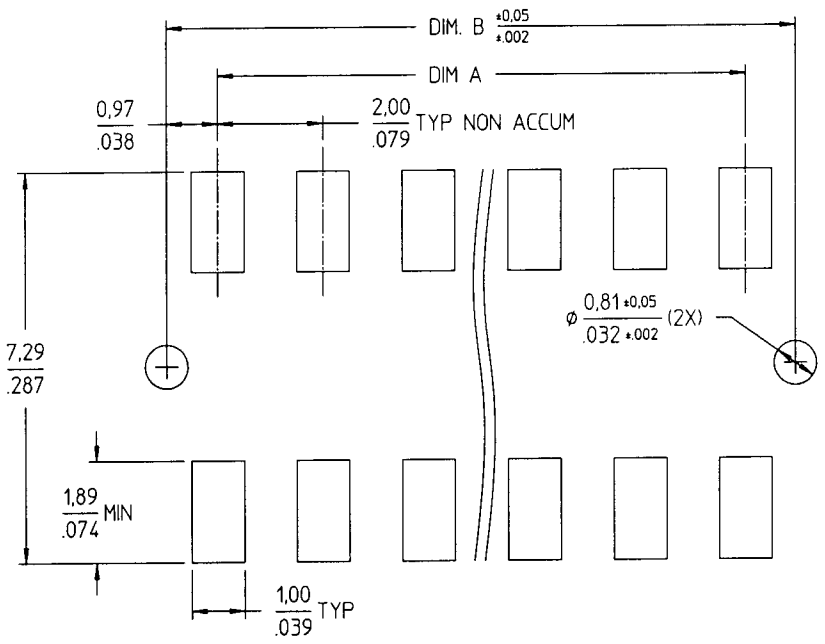
1 2 3 4

A

B

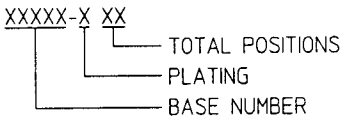
REV  
N  
P  
R

PRODUCT NO	POSITIONS	DIM. A	DIM. B	PLATING OPTIONS OVER CONTACT AREA
92429-X04	2 X 2	2,00/.079	3,92/.154	0 = 0,2u/8u" Au
-X06	2 X 3	4,00/.158	5,92/.233	1 = 0,76u/30u" Au
-X08	2 X 4	6,00/.236	7,92/.312	3 = 0,38u/15u" Au
-X10	2 X 5	8,00/.315	9,92/.391	
-X12	2 X 6	10,00/.394	11,92/.469	
-X14	2 X 7	12,00/.472	13,92/.548	
-X16	2 X 8	14,00/.551	15,92/.627	
-X18	2 X 9	16,00/.630	17,92/.706	
-X20	2 X 10	18,00/.709	19,92/.784	
-X22	2 X 11	20,00/.787	21,92/.863	
-X24	2 X 12	22,00/.866	23,92/.942	
-X26	2 X 13	24,00/.945	25,92/1,020	
-X28	2 X 14	26,00/1,024	27,92/1,099	
-X30	2 X 15	28,00/1,102	29,92/1,178	



RECOMMENDED PAD LAYOUT

- NOTES :
- HOUSING MAT'L : HIGH TEMP PLASTIC.
  - TERMINAL MAT'L : BeCu.
  - TERMINAL RETENTION 0.5 Kg/1.1 Lbs.
  - SOLDER TAILS ARE TIN/LEAD PLATED.
  - 'V' CUT OPTIONAL.
  - PRODUCT DESCRIPTION CODE :



- PACKAGING :
  - XXXXX-XXX --- STD PACKAGING IN TUBE.
  - XXXXX-XXXTR --- TAPE AND REEL (CONDUCTIVE) PACKAGING WITH PICK-UP CAP (SEE FIG 1).
  - XXXXX-XXXTRN --- TAPE AND REEL (CONDUCTIVE) PACKAGING WITHOUT PICK-UP CAP.
  - XXXXX-XXXCR --- TAPE AND REEL (NON-CONDUCTIVE) PACKAGING WITH PICK-UP CAP (SEE FIG 1).
  - XXXXX-XXXCRN --- TAPE AND REEL (NON-CONDUCTIVE) PACKAGING WITHOUT PICK-UP CAP.

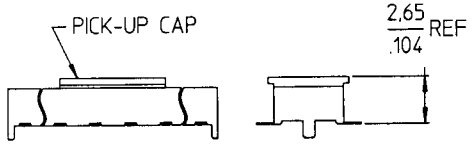


FIG. 1  
NOTE 7(b) & (d)

CUSTOMER COPY

GEN. TOLERANCES		DO NOT SCALE DWG.		
X,X+0.3/XX+01 X,XX+0.13/XXX+005 X,XXX+0.051/XXXX+0020 ANGLES = ±2°		MM INCH		
		NAME	DATE	DESCRIPTION
		BS LOW	06JAN00	LOW PROFILE VCC SMT 2.1 TOP ENTRY ASSY WITH 0,76/.030 LOCATING FEATURES
		CHECKED	66JAN00	PRODUCT NO. 92429
		APPROVED	6 JAN 2000	SCALE SHT 2 OF 2