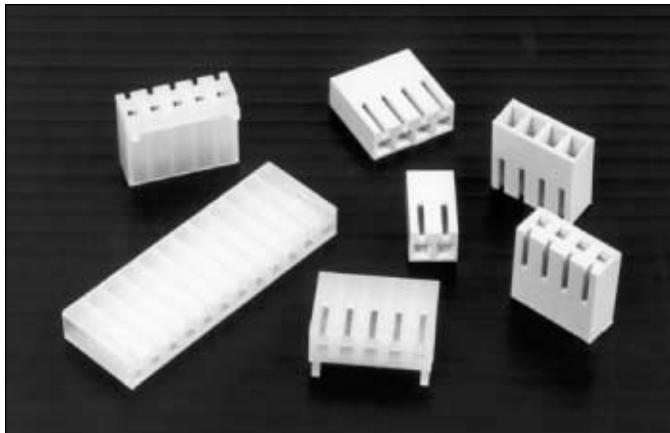


.156" (3.96 mm) Crimp Receptacles



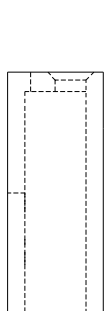
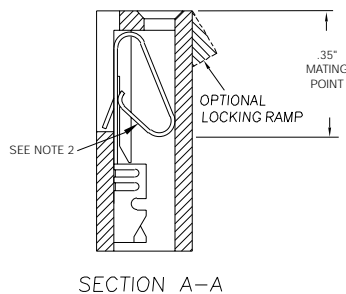
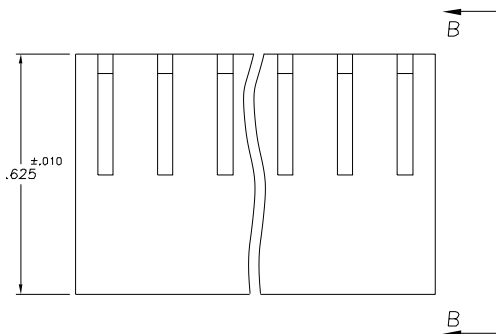
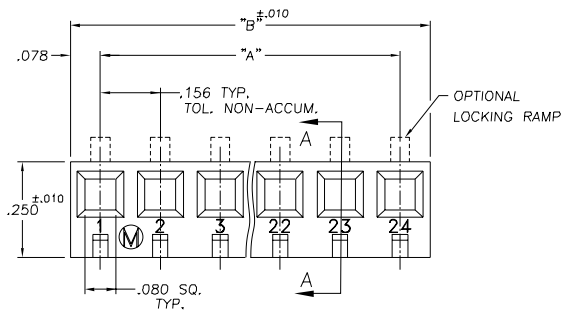
3300 Series "TERMACON"

PART NUMBER LEGEND

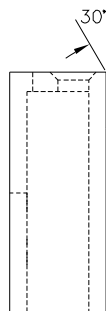
33X0 - XXX

- NUMBER OF POSITIONS (SEE TABLE I)
- CONNECTOR STYLE
 - 0 = W/O LOCK TAB
 - 1 = WITH LOCK TAB
 - 3 = WITH FULL LOCK RAMP
 - 4 = WITH LOCKING RAMP & POLARIZING KEY
- INSULATOR MATERIAL
SEE NOTE 1

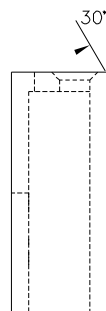
Mates with 3100 Series Headers



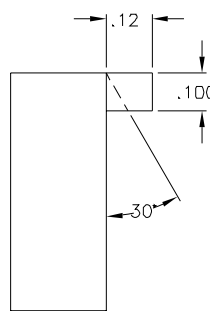
VIEW B-B
PART No. 33X0-QXX
(W/O LOCKING RAMP)



VIEW B-B
PART No. 33X0-1XX
(W/ LOCKING RAMP)



VIEW B-B
PART No. 33X0-3XX
(W/ FULL LENGTH
LOCKING RAMP)



VIEW B-B
PART No. 33X0-4XX
(W/ LOCKING RAMP AND
POLARIZING KEYS)

NOTES:

INSULATOR MATERIAL :

1. 3300-XXX : NYLON 6/6, UL 94V-2,
COLOR: NATURAL
- 3360-XXX : NYLON 6/6, UL 94V-0,
COLOR: NATURAL

2. THIS PART TO BE USED IN CONJUNCTION WITH PART NO. 34XX-XXX CRIMP CONTACT

ADDITIONAL SPECIFICATIONS

MATING CONTACT

APPLICATION TOOLING

TABLE 1

PART No.	No. OF CIRCUITS	DIM "A"	DIM "B"
33X0-X01	1	.200	.200
-X02	2	.156	.312
-X03	3	.312	.468
-X04	4	.468	.624
-X05	5	.624	.780
-X06	6	.780	.936
-X07	7	.936	1.092
-X08	8	1.092	1.248
-X09	9	1.248	1.404
-X10	10	1.404	1.560
-X11	11	1.560	1.716
-X12	12	1.716	1.872
-X13	13	1.872	2.028
-X14	14	2.028	2.184
-X15	15	2.184	2.340
-X16	16	2.340	2.496
-X17	17	2.496	2.652
-X18	18	2.652	2.808
-X19	19	2.808	2.964
-X20	20	2.964	3.120
-X21	21	3.120	3.276
-X22	22	3.276	3.432
-X23	23	3.432	3.588
33X0-X24	24	3.588	3.744