

Customer Information Sheet

DRAWING No.: M22-19X00XX

SHEET 1 OF 2

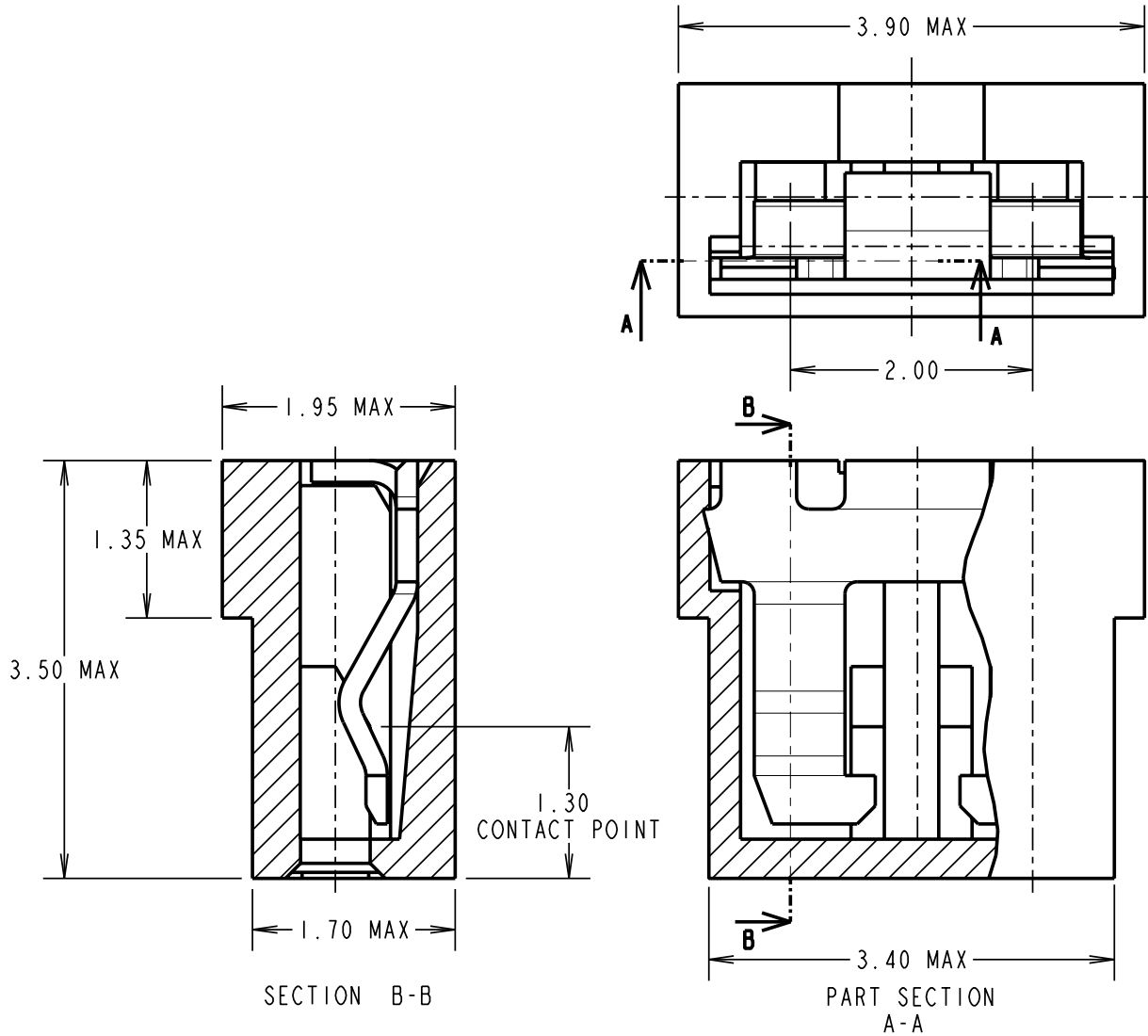
IF IN DOUBT - ASK

(C)

NOT TO SCALE

THIRD ANGLE PROJECTION

ALL DIMENSIONS IN mm



SPECIFICATIONS:

MATERIALS:

MOULDING = GLASS FILLED POLYESTER UL94V-0
CONTACT = BERYLLIUM COPPER

FINISH:

CONTACT:

05 = 0.13µ GOLD ON CONTACT FACE OVER NICKEL
46 = 3µ 100% TIN OVER NICKEL
MOULDING COLOUR = SEE ORDER CODE

ELECTRICAL:

CURRENT RATING AT 25°C = 2A MAX
WORKING VOLTAGE = 250V AC/DC
VOLTAGE PROOF = 500V AC/DC @ 50Hz
CONTACT RESISTANCE (MAXIMUM):

TIN/LEAD = 20MILLOHMS INITIAL
25 MILLIOHMS AFTER CONDITIONING
GOLD = 15 MILLIOHMS INITIAL
20 MILLIOHMS AFTER CONDITIONING

INSULATION RESISTANCE (MINIMUM):

INITIAL = 1000 MEGOHMS
AFTER CONDITIONING = 1000 MEGAOHMS

ENVIRONMENTAL:

TEMPERATURE RANGE = -40°C TO +85°C

MECHANICAL:

DURABILITY:

TIN/LEAD = 50 OPERATIONS
GOLD = 300 OPERATIONS
INSERTION FORCE = 10N MAX
WITHDRAWAL FORCE = IN MIN

FOR COMPLETE SPECIFICATION, SEE COMPONENT SPECIFICATION C013XX (LATEST ISSUE)

ORDER CODE:

M22-19X00XX

MOULDING COLOUR

- 0 = BLACK
- 1 = BLUE
- 2 = RED
- 3 = LIGHT GREY

CONTACT FINISH

- 05 = GOLD
- 46 = 100% TIN

RA	5	08.10.08	10154
NAME	ISS.	DATE	C/NOTE
APPROVED:		R. ADDE	
CHECKED:		M.G. PLESTED	
DRAWN:		W. J. BOURNE	
CUSTOMER REF.:			
ASSEMBLY DRG:			

HARWIN

HARWIN USA TEL: 603 893 5376 FAX: 603 893 5396 mis@harwin.com	HARWIN Europe (UK) TEL: 023 9231 4545 FAX: 023 9231 4590 mis@harwin.co.uk	HARWIN Asia TEL: +65 6 779 4909 FAX: +65 6 779 3868 mis@harwin.com.sg
--	--	--

THIS DRAWING AND ANY INFORMATION OR DESCRIPTIVE MATTER SET OUT HEREON ARE CONFIDENTIAL AND COPYRIGHT PROPERTY OF THE HARWIN GROUP AND MUST NOT BE DISCLOSED, LOANED, COPIED OR USED FOR MANUFACTURING, TENDERING OR FOR ANY OTHER PURPOSE WITHOUT THEIR WRITTEN PERMISSION.

TOLERANCES
X. = ±1mm
X.X = ±0.25mm
X.XX = ±0.10mm
X.XXX = ±0.01mm
ANGLES = ±5°
UNLESS STATED

MATERIAL:
FINISH:
S/AREA: mm²

TITLE: 2mm PITCH JUMPER SOCKET ASSEMBLY (OPEN TOP)
DRAWING NUMBER: M22-19X00XX
SHT 1 **OF** 2