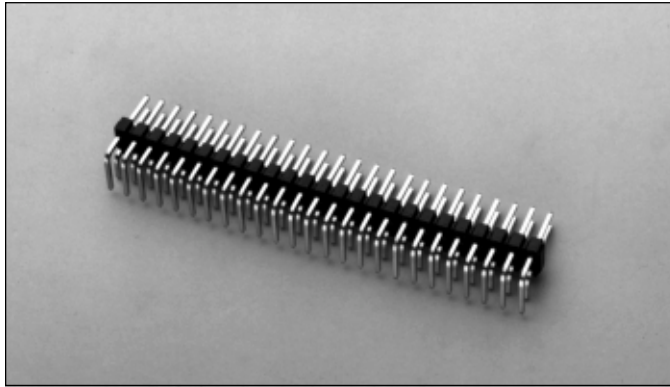


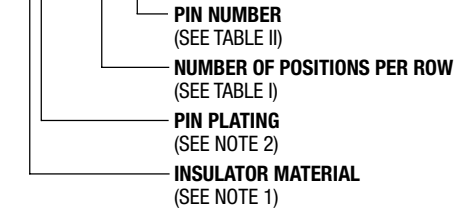
# .100" (2.54mm) Dual Row, Through Hole, Right Angle, Low Profile Header



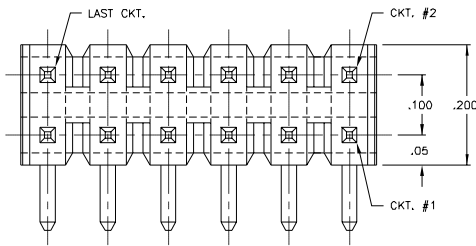
## 9100 SERIES ("POST/BOXE")

### PART NUMBER LEGEND

#### 91XX-4-2XX-XX



### MATING CONNECTORS: 9000 SERIES



### NOTES:

- 1) MATERIALS: INSULATOR - 910X - GLASS FILLED POLYESTER (PET); UL 94V-0; COLOR: BLACK  
911X - GLASS FILLED POLYESTER (PCT); UL 94V-0; COLOR: BLACK  
PINS - PHOSPHOR BRONZE.
- 2) PIN FINISH: 9100 - TIN/LEAD OVER NICKEL PLATE;  
9102 - GOLD (.000015 THICK) OVER NICKEL PLATE (.000030 THICK);  
9108 - SEL. GOLD (.000030 THICK) AND SEL. 90/10 TIN/LEAD (.0001/.0002 THICK) WITH NICKEL UNDERPLATE OVERALL (.000050 THICK);  
910F - SEL. GOLD (.000015 THICK) AND SEL. 90/10 TIN/LEAD (.0001/.0002 THICK) WITH NICKEL UNDERPLATE OVERALL (.000050 THICK);
- 3) PIN RETENTION: 2 LB. MINIMUM.

TABLE II

PART No.	DIM "C"	DIM "D"	DIM "E"	DIM "F"	DIM "G"
910X-4-2XX-01	.420	.090	.110	.200	.120
910X-4-2XX-02	.240	.065	.092	.200	.120
910X-4-2XX-03	.320	.097	.110	.200	.120
910X-4-2XX-04	.230	.060	.083	.200	.120
910X-4-2XX-05	.230	.060	.095	.165	.120

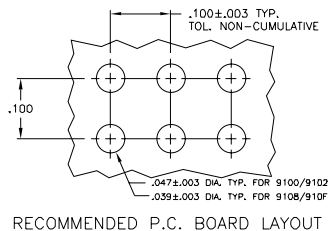
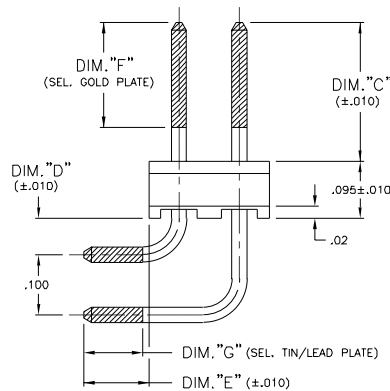
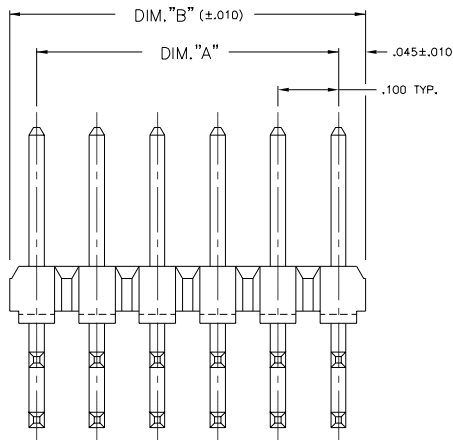


TABLE I

PART No.	No. OF POS.	DIM "A"	DIM "B"
910X-4-202-XX	4	.100	.190
↑ -203 ↓	6	.200	.290
↑ -204 ↓	8	.300	.390
↑ -205 ↓	10	.400	.490
↑ -206 ↓	12	.500	.590
↑ -207 ↓	14	.600	.690
↑ -208 ↓	16	.700	.790
↑ -209 ↓	18	.800	.890
↑ -210 ↓	20	.900	.990
↑ -211 ↓	22	1.000	1.090
↑ -212 ↓	24	1.100	1.190
↑ -213 ↓	26	1.200	1.290
↑ -214 ↓	28	1.300	1.390
↑ -215 ↓	30	1.400	1.490
↑ -216 ↓	32	1.500	1.590
↑ -217 ↓	34	1.600	1.690
↑ -218 ↓	36	1.700	1.790
↑ -219 ↓	38	1.800	1.890
↑ -220 ↓	40	1.900	1.990
↑ -221 ↓	42	2.000	2.090
↑ -222 ↓	44	2.100	2.190
↑ -223 ↓	46	2.200	2.290
↑ -224 ↓	48	2.300	2.390
↑ -225 ↓	50	2.400	2.490
↑ -226 ↓	52	2.500	2.590
↑ -227 ↓	54	2.600	2.690
↑ -228 ↓	56	2.700	2.790
↑ -229 ↓	58	2.800	2.890
↑ -230 ↓	60	2.900	2.990
↑ -231 ↓	62	3.000	3.090
↑ -232 ↓	64	3.100	3.190
↑ -233 ↓	66	3.200	3.290
↑ -234 ↓	68	3.300	3.390
↑ -235 ↓	70	3.400	3.490
↑ -236 ↓	72	3.500	3.590
↑ -237 ↓	74	3.600	3.690
↑ -238 ↓	76	3.700	3.790
↑ -239 ↓	78	3.800	3.890
↑ 910X-4-240-XX ↓	80	3.900	3.990