

Customer Information Sheet

DRAWING No.: M20-E05XXXX

SHEET 2 OF 2

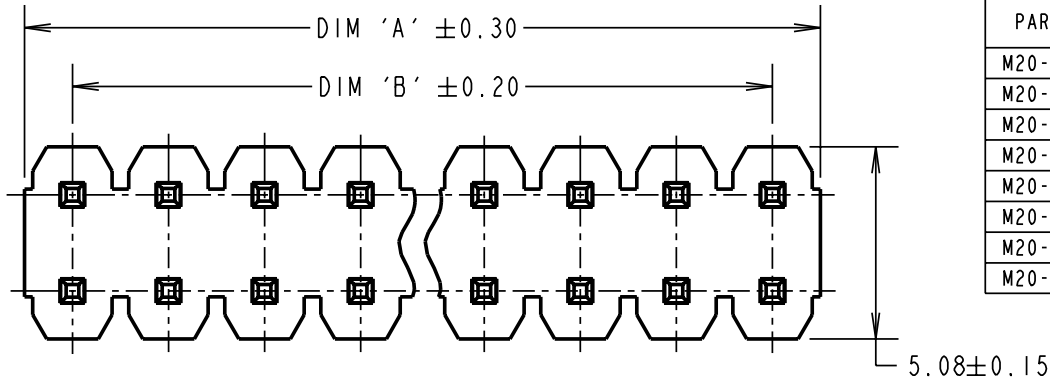
IF IN DOUBT - ASK

(C)

NOT TO SCALE

THIRD ANGLE PROJECTION

ALL DIMENSIONS IN mm



PART No.	No. OF CONTACTS	DIM 'A'	DIM 'B'
M20-E0502XX	2 + 2	5.08	2.54
M20-E0503XX	3 + 3	7.62	5.08
M20-E0504XX	4 + 4	10.16	7.62
M20-E0505XX	5 + 5	12.70	10.16
M20-E0506XX	6 + 6	15.24	12.70
M20-E0507XX	7 + 7	17.78	15.24
M20-E0508XX	8 + 8	20.32	17.78
M20-E0510XX	10 + 10	25.40	22.86

SPECIFICATIONS:

MATERIAL:
 MOULDING = 30% GLASS-FILLED PA6T,
 UL94V-0, BLACK

CONTACT = BRASS

FINISH:
CONTACT:
 45 = GOLD OVER NICKEL
 46 = 100% TIN OVER NICKEL

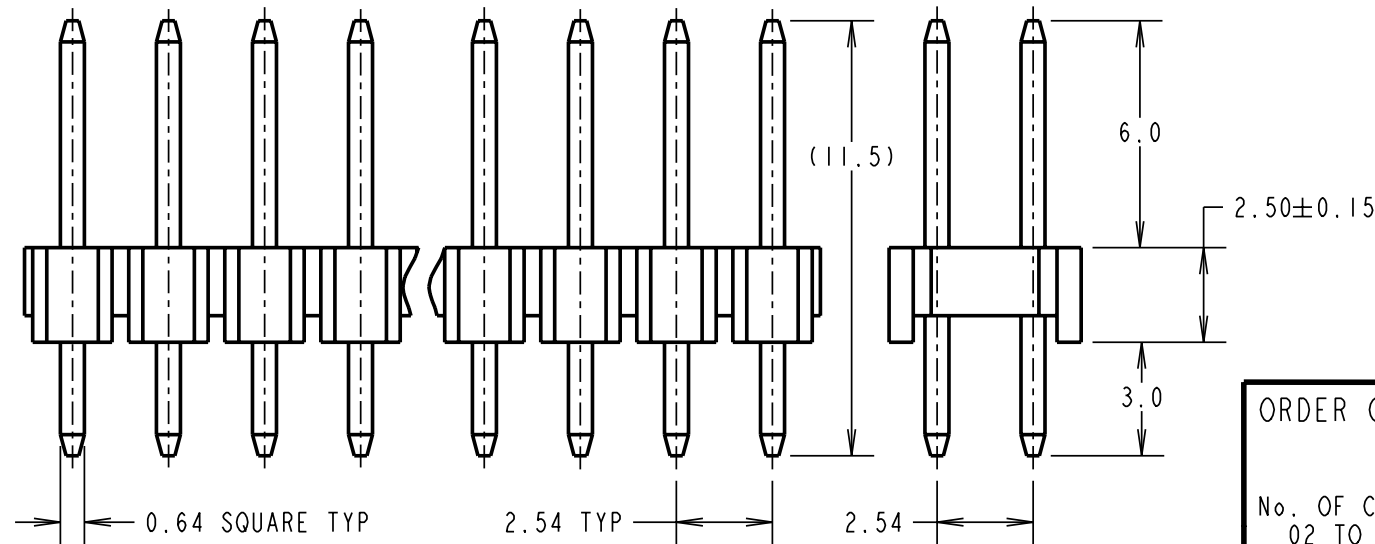
ELECTRICAL:
 CURRENT RATING = 3A
 CONTACT RESISTANCE:
 INITIAL = 20mΩ MAX
 AFTER CONDITIONING = 30mΩ MAX
 INSULATION RESISTANCE = 1,000MΩ MIN
 DIELECTRIC STRENGTH = 1,000V AC / 1 MINUTE

MECHANICAL:
 DURABILITY = 300 OPERATIONS

ENVIRONMENTAL:
 TEMPERATURE RANGE = -40°C TO +105°C

PACKING:
 BAG

Asia only



ORDER CODE:
M20-E05XXXX

No. OF CONTACTS PER ROW ———
 02 TO 08, 10

FINISH _____
 45 = GOLD
 46 = 100% TIN

WJB	1	12.02.08	----
NAME	ISS.	DATE	C/NOTE
APPROVED:		R. ADDE	
CHECKED:		M. G. PLESTED	
DRAWN:		W. J. BOURNE	
CUSTOMER REF.:			
ASSEMBLY DRG.:			

NOTES:
 1. RECOMMENDED PCB HOLE SIZE = $\varnothing 1.02 \pm 0.05$ mm.

HARWIN

HARWIN INC
 U.S.A.
 TEL: 603 893 5376
 FAX: 603 893 5396
 mis@harwin.com

HARWIN PLC
 Europe (U.K.)
 TEL: 023 9231 4545
 FAX: 023 9231 4590
 mis@harwin.co.uk

HARWIN PTE
 Asia (Singapore)
 TEL: +65 6779 4909
 FAX: +65 6779 3868
 mis@harwin.com.sg

THIS DRAWING AND ANY INFORMATION OR DESCRIPTIVE MATTER SET OUT HEREON ARE CONFIDENTIAL AND COPYRIGHT PROPERTY OF THE HARWIN GROUP AND MUST NOT BE DISCLOSED, LOANED, COPIED OR USED FOR MANUFACTURING, TENDERING OR FOR ANY OTHER PURPOSE WITHOUT THEIR WRITTEN PERMISSION.

TOLERANCES
 X. = ± 1 mm
 X.X = ± 0.25 mm
 X.XX = ± 0.10 mm
 X.XXX = ± 0.01 mm
 ANGLES = $\pm 5^\circ$
 UNLESS STATED

MATERIAL:
 SEE ABOVE

FINISH: SEE ABOVE

S/AREA: mm²

TITLE:
 2.54mm PITCH DIL VERTICAL
 PC TAIL PIN HEADER

DRAWING NUMBER:
M20-E05XXXX

SHT
 2 OF 2