

54LS10, 54S10, 54S11 Gates

Military Logic Products

Triple Three-Input NAND ('10), AND ('11) Gates

Product Specification

FUNCTION TABLE

INPUTS			OUTPUTS	
A	B	C	Y('10)	Y('11)
L	L	L	H	L
L	L	H	H	L
L	H	L	H	L
L	H	H	H	L
H	L	L	H	L
H	L	H	H	L
H	H	L	H	L
H	H	H	L	H

H = High voltage level
L = Low voltage level

ORDERING INFORMATION

DESCRIPTION	ORDER CODE
Ceramic DIP	54LS10/BCA, 54S10/BCA, 54S11/BCA
Ceramic Flat Pack	54LS10/BDA, 54S10/BDA, 54S11/BDA
Ceramic LLCC	54LS10/B2A

INPUT AND OUTPUT LOADING AND FAN-OUT TABLE

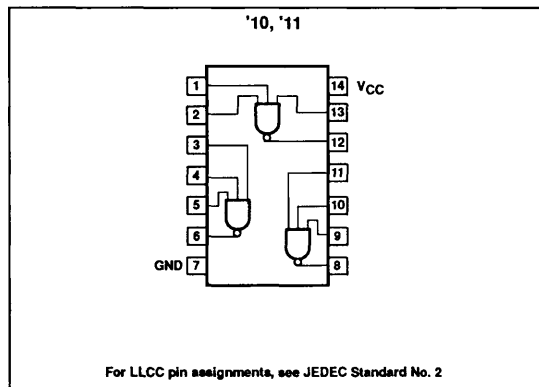
PINS	DESCRIPTION	54S	54LS
A - C	Inputs	1SUL	1LSUL
Y	Output	10SUL	10LSUL

NOTE: Where a 54S Unit Load (SUL) is 50 μ A I_{IH} and -2.0mA I_{IL} , and a 54LS Unit Load (LSUL) is 20 μ A I_{IH} and -0.4mA I_{IL} .

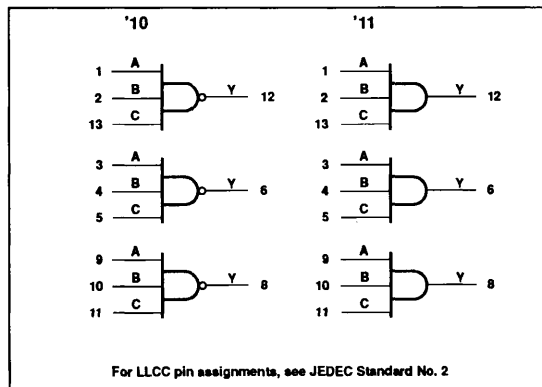
ABSOLUTE MAXIMUM RATINGS (Over operating free-air temperature range unless otherwise noted.)

SYMBOL	PARAMETER	54LS	54S	UNIT
V_{CC}	Supply voltage	7.0	7.0	V
V_I	Input voltage range	-0.5 to +5.5	-0.5 to +5.5	V
I_I	Input current range	-30 to +1	-30 to +5	mA
V_O	Voltage applied to output in High output state range	-0.5 to + V_{CC}	-0.5 to + V_{CC}	V
T_{STG}	Storage temperature range	-65 to +150	-65 to +150	$^{\circ}$ C

PIN CONFIGURATION



LOGIC SYMBOL



Gates

54LS10, 54S10, 54S11

RECOMMENDED OPERATING CONDITIONS

SYMBOL	PARAMETER	54LS			54S			UNIT
		Min	Nom	Max	Min	Nom	Max	
V _{CC}	Supply voltage	4.5	5.0	5.5	4.5	5.0	5.5	V
V _{IH}	High-level input voltage	2.0			2.0			V
V _{IL}	Low-level input voltage			+0.7			+0.8	V
			+125°C	+0.7			+0.7	V
I _{IK}	Input clamp current			-18			-18	mA
I _{OH}	High-level output current			-400			-1000	μA
I _{OL}	Low-level output current			4			20	mA
T _A	Operating free-air temperature range	-55		+125	-55		+125	°C

DC ELECTRICAL CHARACTERISTICS (Over recommended operating free-air temperature range unless otherwise noted.)

SYMBOL	PARAMETER	TEST CONDITIONS ¹	54LS10			54S10, 54S11			UNIT								
			Min	Typ ²	Max	Min	Typ ²	Max									
V _{OH}	High-level output voltage	V _{CC} = Min, V _{IL} = Max, V _{IH} = Min, I _{OH} = Max	2.5	3.4		2.5	3.4		V								
V _{OL}	Low-level output voltage	I _{OL} = Max, V _{CC} = Min, V _{IH} = Min, V _{IL} = Max		0.25	0.4			0.5	V								
		+125°C			0.4			0.45	V								
V _{IK}	Input clamp voltage	V _{CC} = Min, I _I = I _{IK}			-1.5			-1.2	V								
I _{IH2}	Input current at maximum input voltage	V _{CC} = Max						1.0	mA								
									V _I = 5.5V							mA	
I _{IH1}	High-level input current	V _{CC} = Max						50	μA								
									V _I = 7.0V		0.1					mA	
I _{IL}	Low-level input current	V _{CC} = Max							mA								
									V _I = 0.4V		-0.4					mA	
I _{OS}	Short-circuit output current ³	V _{CC} = Max							mA								
									'10	-20	-100	-40		-110	mA		
I _{CC}	Supply current (total)	V _{CC} = Max							mA								
									I _{CC} H Outputs High	'10		0.6	1.2		7.5	12	mA
									I _{CC} L Outputs Low			1.8	3.3		15	27	mA
									I _{CC} H Outputs High	'11					13.5	24	mA
								24	42	mA							

AC ELECTRICAL CHARACTERISTICS T_A = 25°C, V_{CC} = 5.0V⁴

SYMBOL	PARAMETER	TEST CONDITIONS	54LS		54S		UNIT
			C _L = 15pF		C _L = 15pF		
			Min	Max	Min	Max	
t _{PLH} t _{PHL}	Propagation delay	Waveform 1 - '10		15		4.5	ns
				15		5.0	ns
t _{PLH} t _{PHL}	Propagation delay	Waveform 2 - '11		15		7.0	ns
				20		7.5	ns

Gates

54LS10, 54S10, 54S11

AC ELECTRICAL CHARACTERISTICS $T_A = 25^\circ\text{C}$, $V_{CC} = 5.0\text{V}$

SYMBOL	PARAMETER	TEST CONDITIONS	54LS		54S		UNIT
			$C_L = 50\text{pF}$		$C_L = 50\text{pF}$		
			Min	Max	Min	Max	
t_{PLH} t_{PHL}	Propagation delay	Waveform 1 - '10		15 17		7.0 7.5	ns ns
t_{PLH} t_{PHL}	Propagation delay	Waveform 2 - '11		20 25		9 11	ns ns

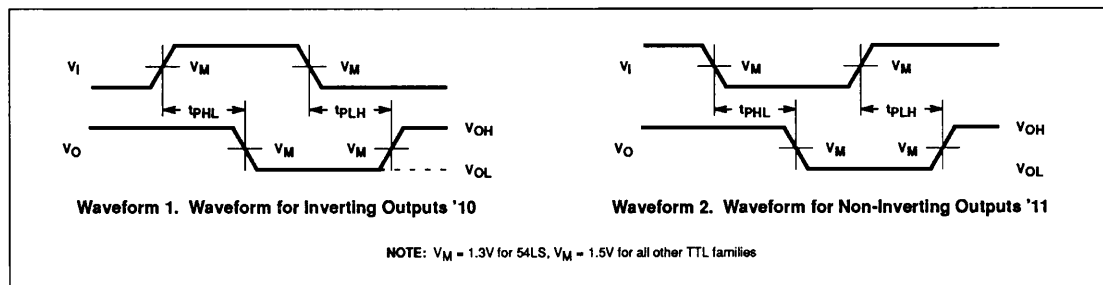
AC ELECTRICAL CHARACTERISTICS $T_A = -55^\circ\text{C}$ and $+125^\circ\text{C}$, $V_{CC} = 5.0\text{V}^4$

SYMBOL	PARAMETER	TEST CONDITIONS	54LS		54S		UNIT
			$C_L = 50\text{pF}$		$C_L = 50\text{pF}$		
			Min	Max	Min	Max	
t_{PLH} t_{PHL}	Propagation delay	Waveform 1 - '10		20 24		9 9	ns ns
t_{PLH} t_{PHL}	Propagation delay	Waveform 2 - '11		26 33		12 14	ns ns

NOTES:

1. For conditions shown as Min or Max, use the appropriate value specified under recommended operating conditions for the applicable type and function table operating mode.
2. All typical values are at $V_{CC} = 5\text{V}$, $T_A = 25^\circ\text{C}$.
3. Not more than one output should be shorted at a time and duration of the short circuit should not exceed one second.
4. These parameters are guaranteed, but not tested.

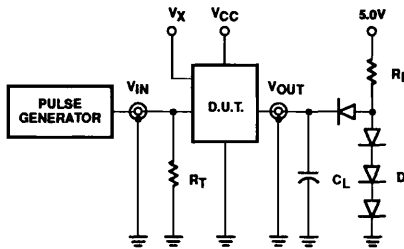
AC WAVEFORMS



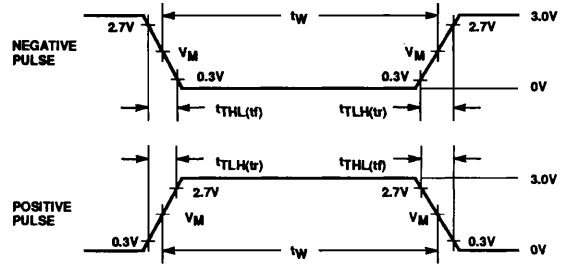
Gates

54LS10, 54S10, 54S11

TEST CIRCUIT AND WAVEFORM



Test Circuit for 54 Totem-Pole Outputs



Input Pulse Definition

FAMILY	INPUT PULSE CHARACTERISTICS					
	R_L	V_M	Rep. Rate	T_W	T_{TLH}	T_{THL}
54LSXXX	2.0k Ω	1.3V	1MHz	500ns	≤ 15 ns	≤ 6 ns
54SXXX	280 Ω	1.5V	1MHz	500ns	≤ 2.5 ns	≤ 2.5 ns

DEFINITIONS:

- C_L = Load capacitance includes jig and probe capacitance; see AC Characteristics for value.
- R_T = Termination resistance should be equal to Z_{OUT} of Pulse Generators.
- D = Diodes are 1N916, 1N3064, or equivalent.
- V_X = Undocked pins must be held at $\leq 0.8V$, $\geq 2.7V$ or open per Function Table.