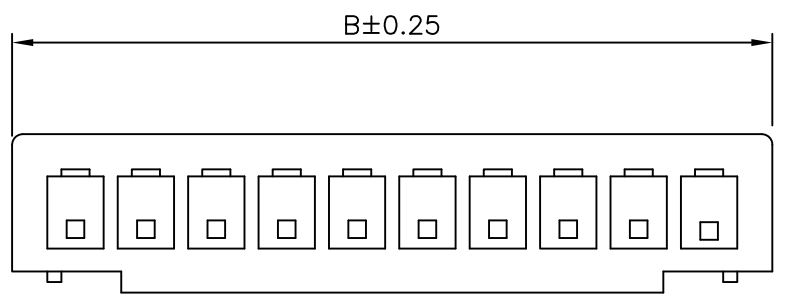
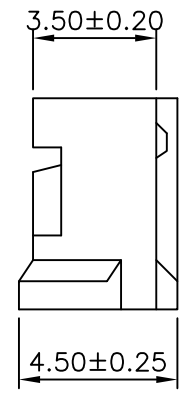
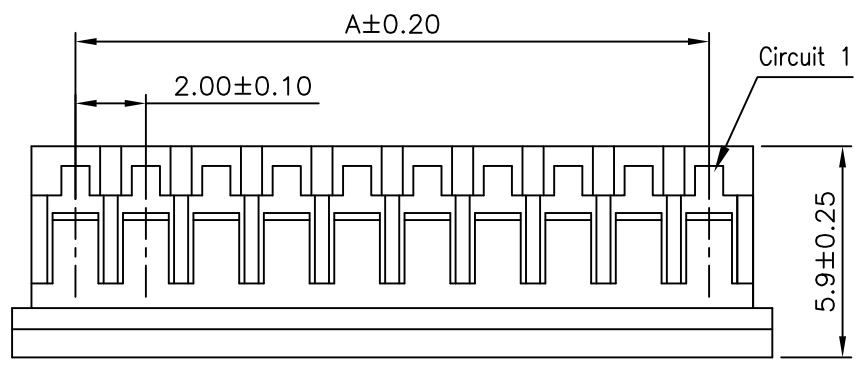


RoHS compliant

REV	DESCRIPTION	DATE



**NOTES**


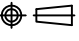
Available in 02 through 15 Circuits  
 Material: Nylon 66 UL94-V0  
 Accepts YY-1120-T Crimp Terminal  
 Mates with YY-1120-W\*\*S or YY-1120-W\*\*R Series Header

**ORDERING INFORMATION**

YY-1120 - H \*\*  
                   1 2

1. H : Housing
2. No. of Circuits 02~15

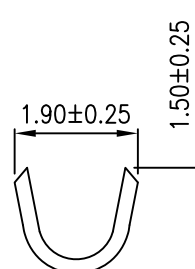
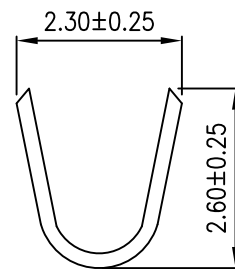
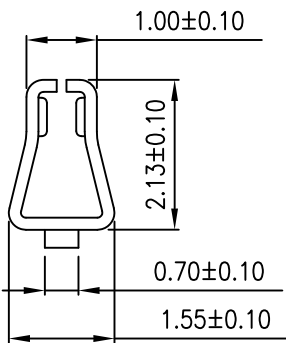
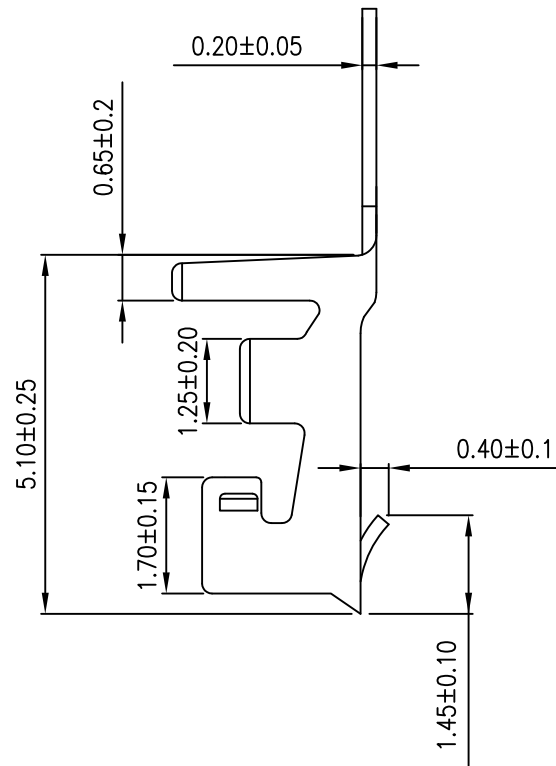
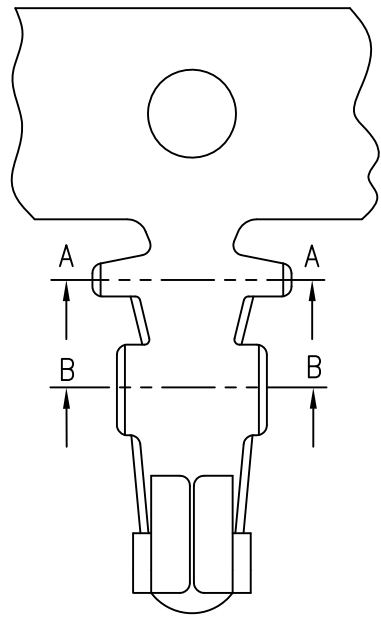
Circuits	Dimension mm		Circuits	Dimension mm	
	A	B		A	B
2	2.00	5.60	9	16.00	19.60
3	4.00	7.60	10	18.00	21.60
4	6.00	9.60	11	20.00	23.60
5	8.00	11.60	12	22.00	25.60
6	10.00	13.60	13	24.00	27.60
7	12.00	15.60	14	26.00	29.60
8	14.00	17.60	15	28.00	31.60

TOLERANCE		 <b>Young Yak Enterprise Co., Ltd.</b>			
X.	--	TITLE 2.0mm(.079") Pitch Wire to Board Housing			
X.X	--				
X.XX	--				
X.XXX	--				
ANGULAR	--				
APPROVALS					
DRAWN	Frank 21-OCTOBER-2008	VIEW	SCALE	PART NO.	REV.
CHECKED	Denise 21-OCTOBER-2008		5:1	YY-1120-H**	A0
APPROVED	Jessica 21-OCTOBER-2008	UNIT	SIZE	DWG NO.	SHEET
		MM	A4	YY-1120-H**-152	1 OF 1



RoHS compliant

REV	DESCRIPTION	DATE



**NOTES**

Used in YY-1120-H Series Housing  
 Accepts AWG #24~28 Wire Range  
 Insulation O.D.=1.40 mm(max)  
 Material : Phosphor Bronze or Brass  
 Finish : Tin-Plated  
 Qty/reel : 10000 PCS  
 Thickness: 0.2mm

**ORDERING INFORMATION**

YY-1120 - T T A \*  
                   1 2 3 4

1. T : Terminal
2. TA : Tin , Pre-tinned
3. Material  
 : Brass  
 : Phosphor bronze

TOLERANCE					
X.	--	<b>Young Yak Enterprise Co., Ltd.</b> TITLE 2.0mm(.079") Pitch Wire to Board Terminal			
X.X	--				
X.XX	--				
X.XXX	--				
ANGULAR	--				
APPROVALS					
DRAWN	Frank	VIEW	SCALE	PART NO.	REV.
	21-OCTOBER-2008		5:1	YY-1120-TTA*	AO
CHECKED	Denise	UNIT	SIZE	DWG NO.	SHEET
	21-OCTOBER-2008	MM	A4	YY-1120-TTA*-152	1 OF 1
APPROVED	Jessica				
	21-OCTOBER-2008				



RoHS compliant

REV	DESCRIPTION	DATE

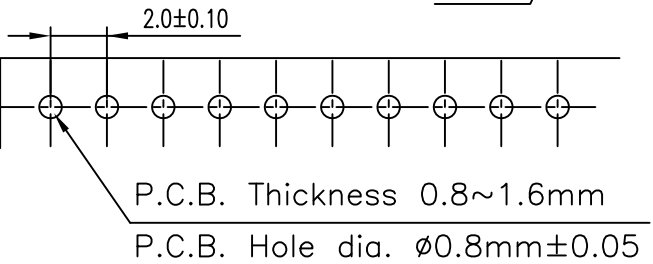
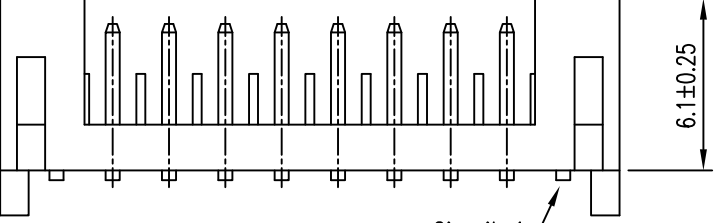
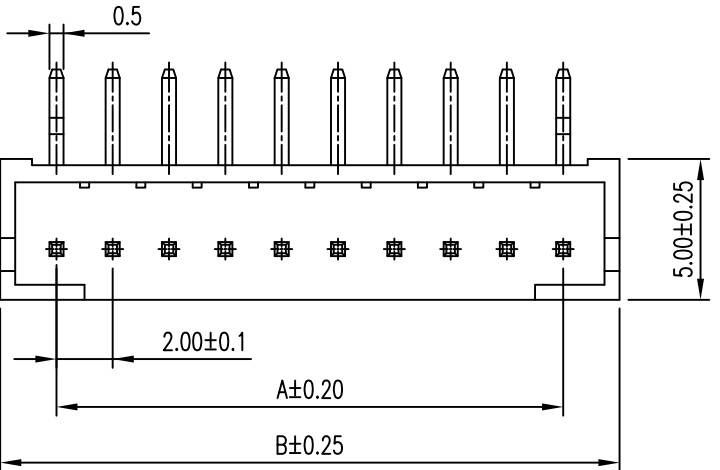
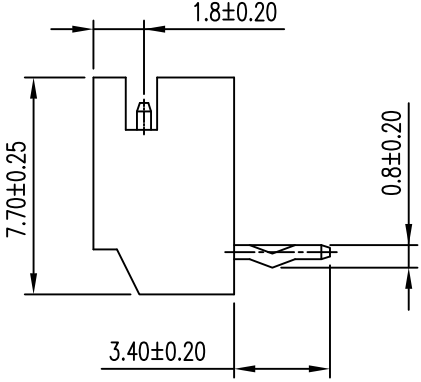
**NOTES**

Available in 02 through 15 Circuits  
 Material: Nylon 66 UL94-V0  
 Mates with YY-1120-H Series Housing  
 0.5mm(.020") Square Pin  
 Pin Material: Brass/Tin-Plated

**ORDERING INFORMATION**

YY-1120 - W \*\* R T  
                                   1 2 3

- 1. No. of Circuits 02~15
- 2. R : Right Angle
- 3. Plated  
     T : Tin



P.C.B LAYOUT

Circuits	Dimension mm		Circuits	Dimension mm	
	A	B		A	B
2	2.00	6.00	9	16.00	20.00
3	4.00	8.00	10	18.00	22.00
4	6.00	10.00	11	20.00	24.00
5	8.00	12.00	12	22.00	26.00
6	10.00	14.00	13	24.00	28.00
7	12.00	16.00	14	26.00	30.00
8	14.00	18.00	15	28.00	32.00

TOLERANCE	
X.	--
X.X	--
X.XX	--
X.XXX	--
ANGULAR	--
APPROVALS	
DRAWN	Frank
	21-OCTOBER-2008
CHECKED	Denise
	21-OCTOBER-2008
APPROVED	Jessica
	21-OCTOBER-2008

**Young Yak Enterprise Co., Ltd.**

TITLE: 2.0mm(.079") Pitch  
Wire to Board Header

VIEW	SCALE	PART NO.	REV.
	4:1	YY-1120-W**RT	A0
UNIT	SIZE	DWG NO.	SHEET
MM	A4	YY-1120-W**RT-152	1 OF 1



RoHS compliant

REV	DESCRIPTION	DATE

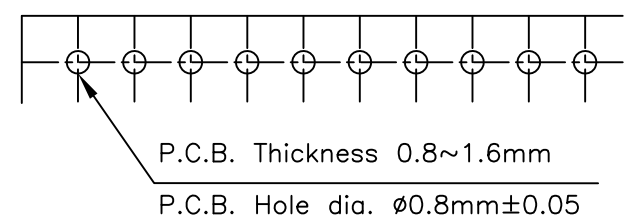
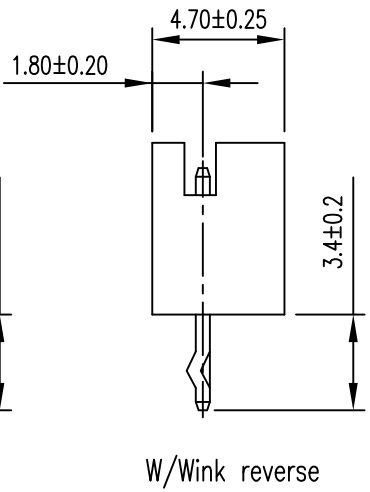
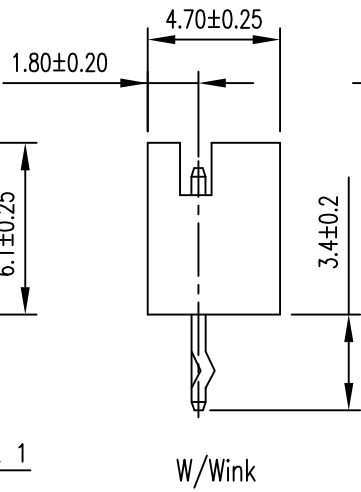
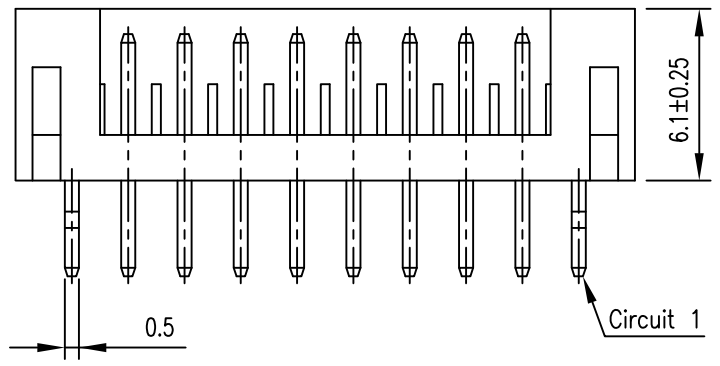
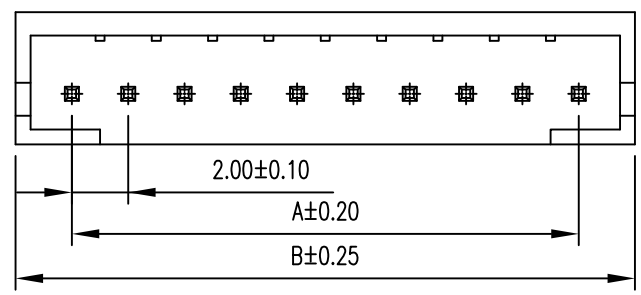
**NOTES**

Available in 02 through 15 Circuits  
 Material: Nylon 66 UL94-V0  
 Mates with YY-1120-H Series Housing  
 0.5mm(.020") Square Pin  
 Pin Material: Brass/Tin-Plated

**ORDERING INFORMATION**

YY-1120 - W \*\* S T \*  
                   1 2 3 4

- No. of Circuits 02~15
- S : Straight
- Plated  
T : Tin
- : W/Kink  
1 : W/Kink reverss



P.C.B LAYOUT

Circuits	Dimension mm		Circuits	Dimension mm	
	A	B		A	B
2	2.00	6.00	9	16.00	20.00
3	4.00	8.00	10	18.00	22.00
4	6.00	10.00	11	20.00	24.00
5	8.00	12.00	12	22.00	26.00
6	10.00	14.00	13	24.00	28.00
7	12.00	16.00	14	26.00	30.00
8	14.00	18.00	15	28.00	32.00

TOLERANCE	
X.	--
X.X	±0.25
X.XX	±0.15
X.XXX	±0.05
ANGULAR	--



TITLE  
 2.0mm(.079") Pitch  
 Wire to Board Header

APPROVALS		VIEW	SCALE	PART NO.	REV.
DRAWN	Frank		4:1	YY-1120-W**ST*	AO
CHECKED	Denise				
APPROVED	Jessica	UNIT	SIZE	DWG NO.	SHEET
		MM	A4	YY-1120-W**ST*-152	1 OF 1

