

# Customer Information Sheet

DRAWING No.: M50-315XX42P

SHEET 2 OF 2

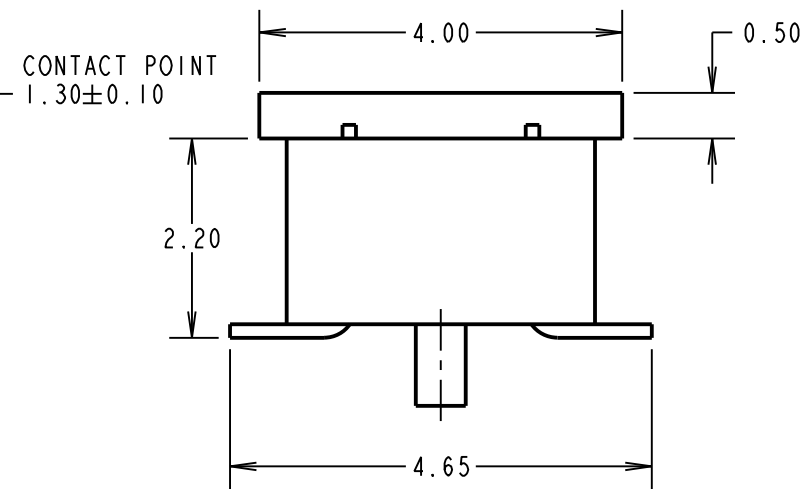
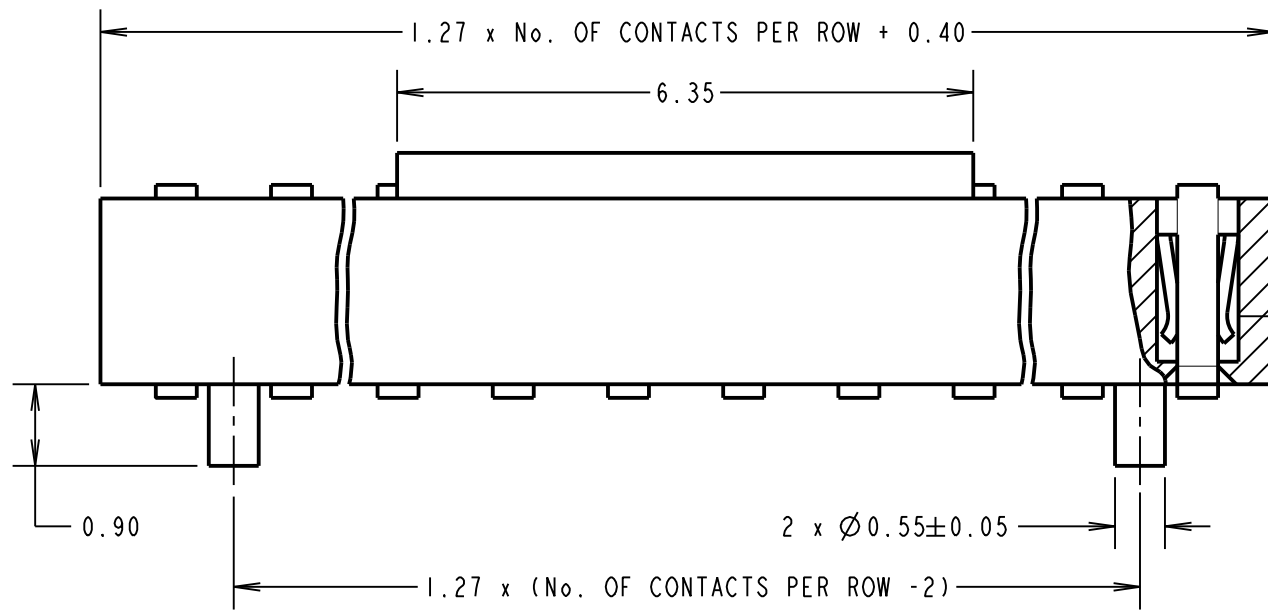
IF IN DOUBT - ASK

(C)

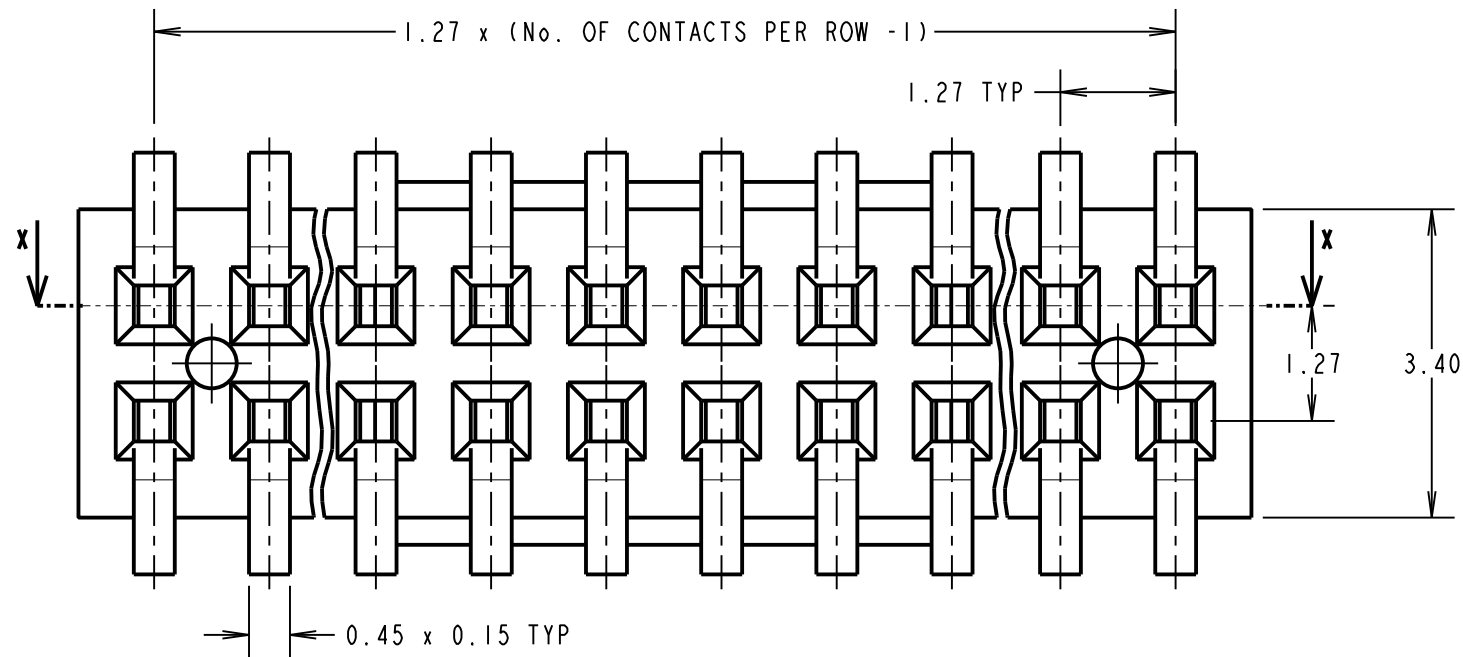
NOT TO SCALE

THIRD ANGLE PROJECTION

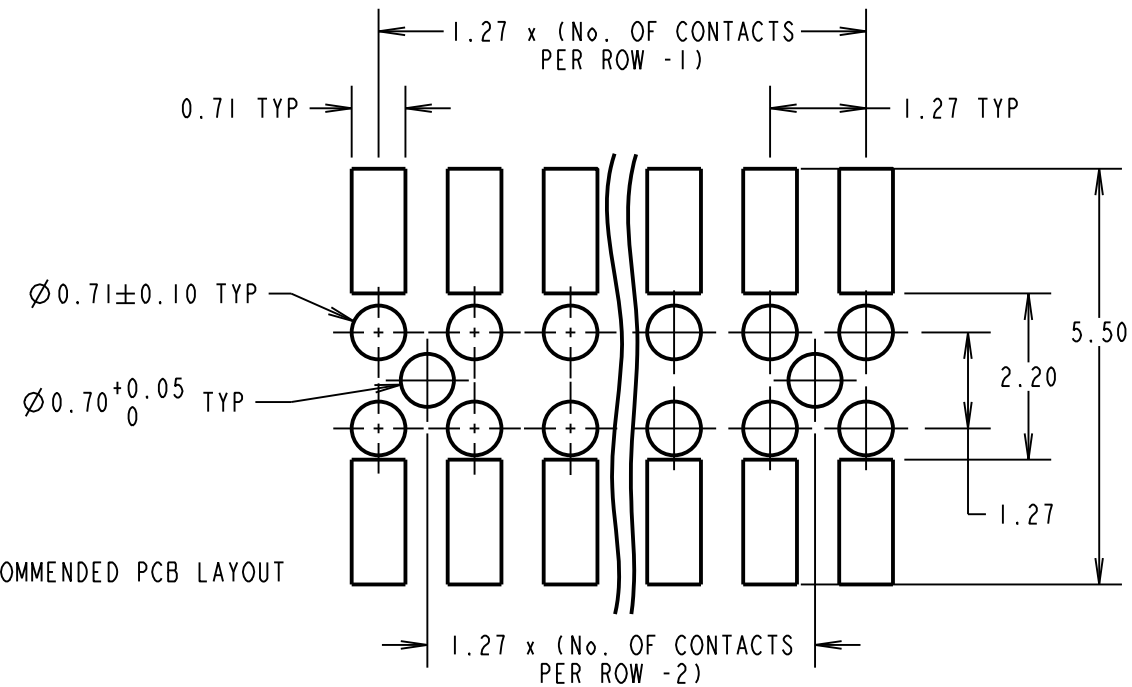
ALL DIMENSIONS IN mm



**SPECIFICATIONS:**  
**MATERIAL:**  
 MOULDING = NYLON 9T, UL94V-0, BLACK  
 CONTACT = PHOSPHOR BRONZE  
**FINISH:**  
 CONTACTS =  $1.27\mu$  NICKEL ALL OVER,  
 GOLD FLASH ON CONTACT AREA,  $2.54\mu$  100% TIN ON TAILS  
**ELECTRICAL:**  
 CURRENT RATING = 1.5A  
 VOLTAGE RATING = 150V AC/DC  
 CONTACT RESISTANCE =  $20m\Omega$  MAX  
 INSULATION RESISTANCE =  $1000M\Omega$  MIN  
 DIELECTRIC WITHSTANDING = 500V AC (1 MINUTE)  
**MECHANICAL:**  
 INSERTION FORCE = 1.5N MAX  
 WITHDRAWAL FORCE = 0.15N MIN  
 DURABILITY = 100 CYCLES  
**ENVIRONMENTAL:**  
 TEMPERATURE RANGE =  $-40^{\circ}\text{C}$  TO  $+105^{\circ}\text{C}$   
**PACKING:**  
 TUBE  
 TUBE  
 FOR COMPLETE SPECIFICATION, SEE COMPONENT SPECIFICATION C029XX (LATEST ISSUE)



**NOTES:**  
 1. ALL TOLERANCES ARE  $\pm 0.25$  UNLESS OTHERWISE STATED.



ORDER CODE  
**M50-315XX42P**

No. OF CONTACTS PER ROW: \_\_\_\_\_  
 03 TO 50  
 FINISH: \_\_\_\_\_  
 42 = SELECTIVE GOLD + 100% TIN

**HARWIN**

www.harwin.com  
 technical@harwin.com

THIS DRAWING AND ANY INFORMATION OR DESCRIPTIVE MATTER SET OUT HEREON ARE CONFIDENTIAL AND COPYRIGHT PROPERTY OF THE HARWIN GROUP AND MUST NOT BE DISCLOSED, LOANED, COPIED OR USED FOR MANUFACTURING, TENDERING OR FOR ANY OTHER PURPOSE WITHOUT THEIR WRITTEN PERMISSION.

**TOLERANCES**  
~~X =  $\pm 1\text{mm}$~~   
~~X.X =  $\pm 0.25\text{mm}$~~   
~~X.XX =  $\pm 0.10\text{mm}$~~   
~~X.XXX =  $\pm 0.01\text{mm}$~~   
 ANGLES =  $\pm 5^{\circ}$   
 UNLESS STATED

**MATERIAL:**  
 SEE ABOVE  
**FINISH:**  
 SEE ABOVE  
**S/AREA:**  
 mm<sup>2</sup>

**TITLE:**  
 1.27mm PITCH DIL VERTICAL SMT SOCKET ASSY (P&P CAP)

**DRAWING NUMBER:**  
**M50-315XX42P**

SHT  
 2 OF 2

SB	8	19.10.12	11847
NAME	ISS.	DATE	C/NOTE
APPROVED:		S.BENNETT	
CHECKED:		M.PLESTED	
DRAWN:		J. EVANS	
CUSTOMER REF.:			
ASSEMBLY DRG:			